

## TSG101 RABBIT PAB

**Cat.#:** N225409

**Product Name:** Anti-TSG101 Rabbit pAb

**Synonyms:** TSG101; Tumor susceptibility gene 101 protein; ESCRT-I complex subunit TSG101

**UNIPROT ID:** Q99816

**Background:** Component of the ESCRT-I complex, a regulator of vesicular trafficking process. Binds to ubiquitinated cargo proteins and is required for the sorting of endocytic ubiquitinated cargos into multivesicular bodies (MVBs). Mediates the association between the ESCRT-0 and ESCRT-I complex. Required for completion of cytokinesis; the function requires CEP55.

**Immunogen:** The antiserum was produced against synthesized peptide derived from human TSG101. AA range:281-330

**Applications:** WB,IHC-F,IHC-P,ICC/IF,ELISA

**Recommended Dilutions:** WB: 1/500-1/1000 IHC: 1/50-1/100 IF: 1/50-1/200  
ELISA: 1/10000

**Host Species:** Rabbit

**Clonality:** Rabbit Polyclonal

**Clone ID:** -

**MW:** Calculated MW: 44 kDa; Observed MW: 44 kDa

**Isotype:** IgG

**Purification:** Affinity Purified

**Species Reactivity:** Human,Mouse,Rat,Monkey

**Conjugation:** Unconjugated

**Modification:** Unmodified

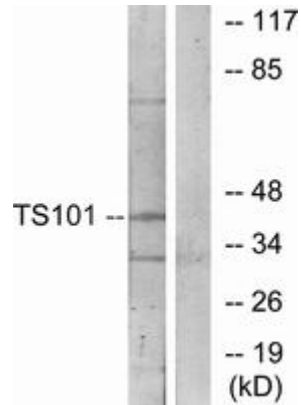
**Constituents:** PBS (without Mg<sup>2+</sup> and Ca<sup>2+</sup>), pH 7.3 containing 50% glycerol, 0.5% BSA and 0.02% sodium azide

**Research Areas:** Cell Biology

**Storage & Shipping:** Store at -20°C. Avoid repeated freezing and thawing



Immunofluorescence analysis of TSG101 in Hela using TGS101 antibody(green)



Western blot analysis of TSG101 in COS7 lysates using TS101 antibody. The lane on the right is blocked with the synthesized peptide.