

TSLP RABBIT PAB

Cat.#: S216870

Product Name: Anti-TSLP Rabbit Polyclonal Antibody

Synonyms:

UNIPROT ID: Q969D9 (Gene Accession - BC016720)

Background: This gene encodes a hemopoietic cytokine proposed to signal through a heterodimeric receptor complex composed of the thymic stromal lymphopoietin receptor and the IL-7R alpha chain. It mainly impacts myeloid cells and induces the release of T cell-attracting chemokines from monocytes and enhances the maturation of CD11c(+) dendritic cells. The protein promotes T helper type 2 (TH2) cell responses that are associated with immunity in various inflammatory diseases, including asthma, allergic inflammation and chronic obstructive pulmonary disease. The protein is therefore considered a potential therapeutic target for the treatment of such diseases. In addition, the shorter (predominant) isoform is an antimicrobial protein, displaying antibacterial and antifungal activity against *B. cereus*, *E. coli*, *E. faecalis*, *S. mitis*, *S. epidermidis*, and *C. albicans*. Alternative splicing of this gene results in multiple transcript variants.

Immunogen: Fusion protein of human TSLP

Applications: ELISA, WB, IHC

Recommended Dilutions: IHC: 50-200;WB: 1000-5000;ELISA: 5000-10000

Host Species: Rabbit

Clonality: Rabbit Polyclonal

Isotype: Immunogen-specific rabbit IgG

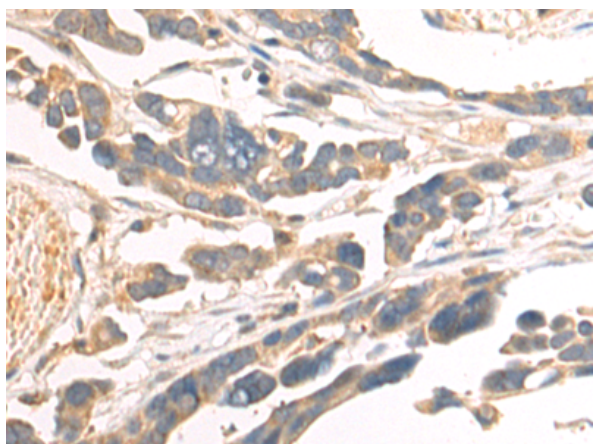
Purification: Antigen affinity purification

Species Reactivity: Human, Mouse

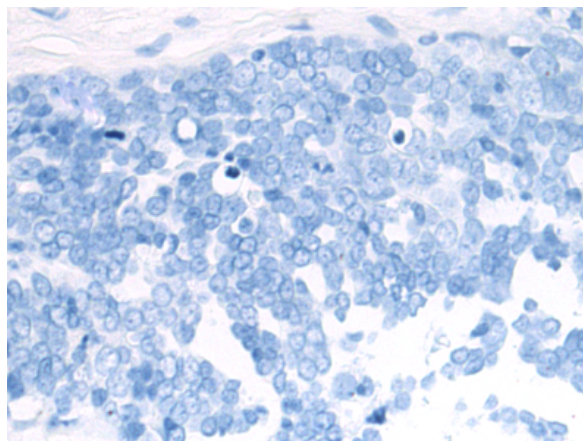
Constituents: PBS (without Mg²⁺ and Ca²⁺), pH 7.4, 150 mM NaCl, 0.05% Sodium Azide and 40% glycerol

Research Areas: Immunology

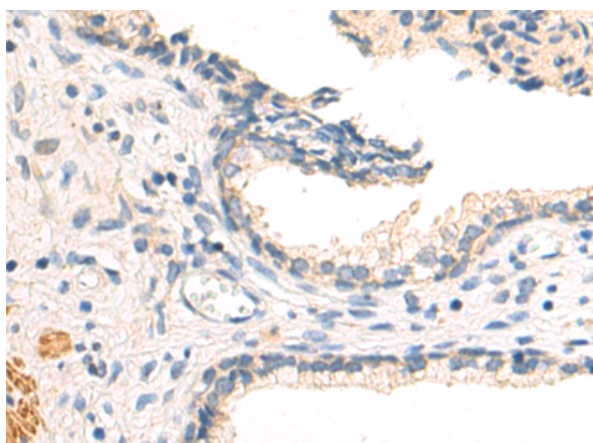
Storage & Shipping: Store at -20°C. Avoid repeated freezing and thawing



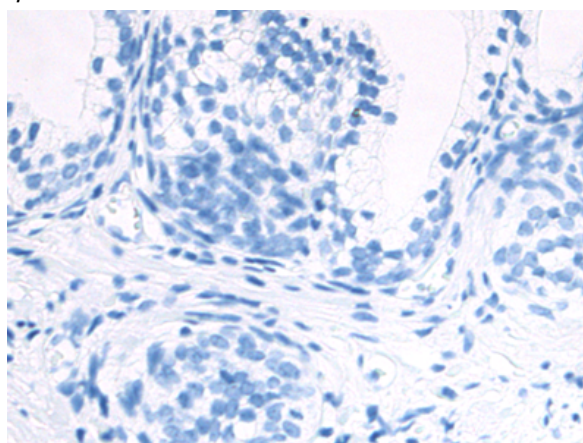
Immunohistochemistry analysis of paraffin embedded Human colorectal cancer tissue using 216870 (TSLP Antibody) at a dilution of 1/75 (Secreted).



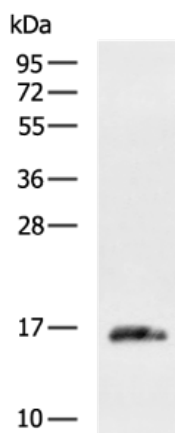
In comparison with the IHC on the left, the same paraffin-embedded Human colorectal cancer tissue is first treated with the fusion protein and then with 216870 (Anti-TSLP Antibody) at dilution 1/75.



The image on the left is immunohistochemistry of paraffin-embedded Human prostate cancer tissue using 216870 (Anti-TSLP Antibody) at a dilution of 1/75.



In comparison with the IHC on the left, the same paraffin-embedded Human prostate cancer tissue is first treated with fusion protein and then with D221390 (Anti-TSLP Antibody) at dilution 1/75.



Gel: 12% SDS-PAGE, Lysate: 40 µg;
 Lane: Mouse fetal muscle tissue lysate;
 Primary antibody: 216870 (TSLP Antibody) at dilution 1/1000;
 Secondary antibody: HRP-conjugated Goat anti rabbit IgG at 1/5000 dilution;
 Exposure time: 30 seconds



Product Description

Pioneering GTPase and Oncogene Product Development since 2010
