

TSPAN8 RABBIT PAB

Cat.#: S218705

Product Name: Anti-TSPAN8 Rabbit Polyclonal Antibody

Synonyms: CO-029; TM4SF3

UNIPROT ID: P19075 (Gene Accession - BC005246)

Background: The protein encoded by this gene is a member of the transmembrane 4 superfamily, also known as the tetraspanin family. Most of these members are cell-surface proteins that are characterized by the presence of four hydrophobic domains. The proteins mediate signal transduction events that play a role in the regulation of cell development, activation, growth and motility. This encoded protein is a cell surface glycoprotein that is known to complex with integrins. This gene is expressed in different carcinomas. The use of alternate polyadenylation sites has been found for this gene.

Immunogen: Fusion protein of human TSPAN8

Applications: ELISA, WB, IHC

Recommended Dilutions: IHC: 100–300;WB: 1000–5000;ELISA: 5000–10000

Host Species: Rabbit

Clonality: Rabbit Polyclonal

Isotype: Immunogen-specific rabbit IgG

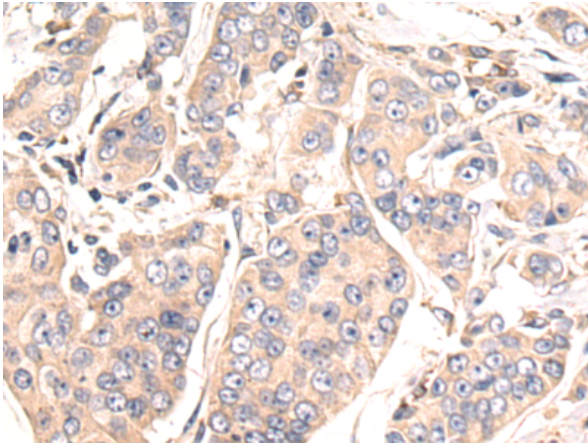
Purification: Antigen affinity purification

Species Reactivity: Human

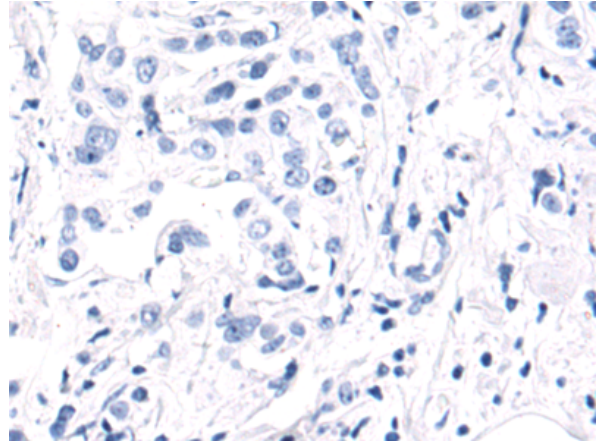
Constituents: PBS (without Mg²⁺ and Ca²⁺), pH 7.4, 150 mM NaCl, 0.05% Sodium Azide and 40% glycerol

Research Areas: Signal Transduction

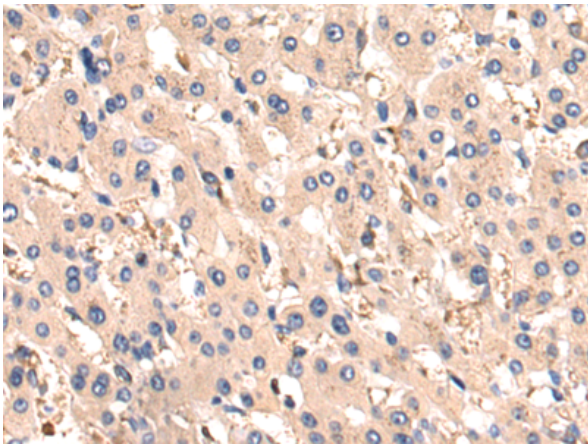
Storage & Shipping: Store at -20°C. Avoid repeated freezing and thawing



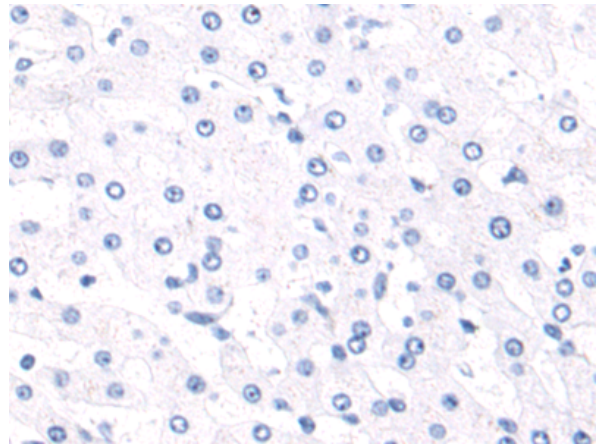
Immunohistochemistry analysis of paraffin embedded Human breast cancer tissue using 218705(TSPAN8 Antibody) at a dilution of 1/120(Cytoplasm).



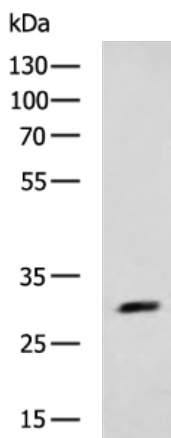
In comparison with the IHC on the left, the same paraffin-embedded Human breast cancer tissue is first treated with the fusion protein and then with 218705(Anti-TSPAN8 Antibody) at dilution 1/120.



The image on the left is immunohistochemistry of paraffin-embedded Human liver cancer tissue using 218705(Anti-TSPAN8 Antibody) at a dilution of 1/120.



In comparison with the IHC on the left, the same paraffin-embedded Human liver cancer tissue is first treated with fusion protein and then with D225024(Anti-TSPAN8 Antibody) at dilution 1/120.



Gel: 8%SDS-PAGE, Lysate:40 µg;
Lane: LOVO cell lysate;
Primary antibody: 218705(TSPAN8 Antibody) at dilution 1/1800;
Secondary antibody: HRP-conjugated Goat anti rabbit IgG at 1/5000 dilution;
Exposure time: 3 seconds



Product Description

Pioneering GTPase and Oncogene Product Development since 2010
