

## TSPY1/TSPY3 RABBIT PAB

**Cat.#:** S221061

**Product Name:** Anti-TSPY1/TSPY3 Rabbit Polyclonal Antibody

**Synonyms:** CT78; TSPY; DYS14; pJA923/CT78

**UNIPROT ID:** Q01534/P0CV98 (Gene Accession - NP\_003299/NP\_001071165 )

**Background:** The protein encoded by this gene is found only in testicular tissue and may be involved in spermatogenesis. Approximately 35 copies of this gene are present in humans, but only a single, nonfunctional orthologous gene is found in mouse. Two transcript variants encoding different isoforms have been found for this gene.

**Immunogen:** Synthetic peptide of human TSPY1/TSPY3

**Applications:** ELISA, IHC

**Recommended Dilutions:** IHC: 30-150; ELISA: 2000-10000

**Host Species:** Rabbit

**Clonality:** Rabbit Polyclonal

**Isotype:** Immunogen-specific rabbit IgG

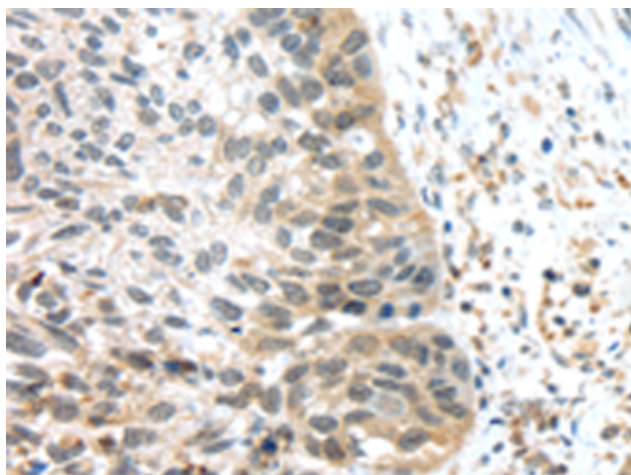
**Purification:** Antigen affinity purification

**Species Reactivity:** Human

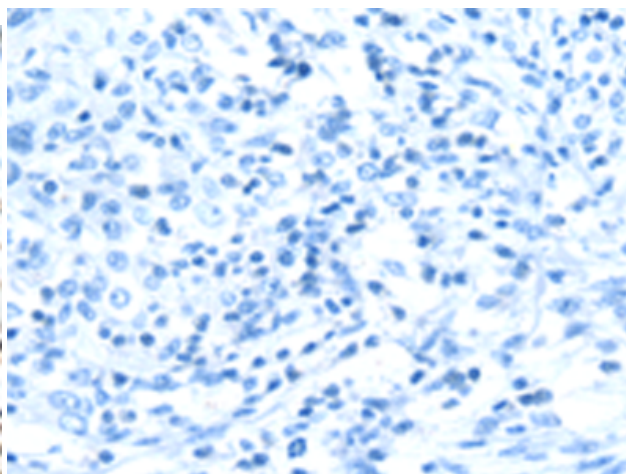
**Constituents:** PBS (without Mg<sup>2+</sup> and Ca<sup>2+</sup>), pH 7.4, 150 mM NaCl, 0.05% Sodium Azide and 40% glycerol

**Research Areas:** Epigenetics and Nuclear Signaling, Stem Cells, Developmental Biology

**Storage & Shipping:** Store at -20°C. Avoid repeated freezing and thawing



Immunohistochemistry analysis of paraffin embedded Human esophagus cancer tissue using 221061(TSPY1/TSPY3 Antibody) at a dilution of 1/45(Nucleus).



In comparison with the IHC on the left, the same paraffin-embedded Human esophagus cancer tissue is first treated with the synthetic peptide and then with 221061(Anti-TSPY1/TSPY3 Antibody) at dilution 1/45.