

TSPYL6 RABBIT PAB

Cat.#: S221060

Product Name: Anti-TSPYL6 Rabbit Polyclonal Antibody

Synonyms:

UNIPROT ID: Q8N831 (Gene Accession - NP_001003937)

Background: TSPYL6 (Testis-specific Y-encoded-like protein 6) is a 410 amino acid member of the nucleosome assembly protein (NAP) family. TSPYL6 is believed to be similar to Testis-specific Y-encoded protein 1 in form and function. The gene that encodes TSPYL6 is found on chromosome 2 which consists of 237 million bases encoding over 1,400 genes and making up approximately 8% of the human genome. A number of genetic diseases are linked to genes on chromosome 2. The lipid metabolic disorder sitosterolemia is associated with ABCG5 and ABCG8. An extremely rare recessive genetic disorder, Alström syndrome is due to mutations in the ALMS1 gene.

Immunogen: Synthetic peptide of human TSPYL6

Applications: ELISA, IHC

Recommended Dilutions: IHC: 25-100; ELISA: 2000-5000

Host Species: Rabbit

Clonality: Rabbit Polyclonal

Isotype: Immunogen-specific rabbit IgG

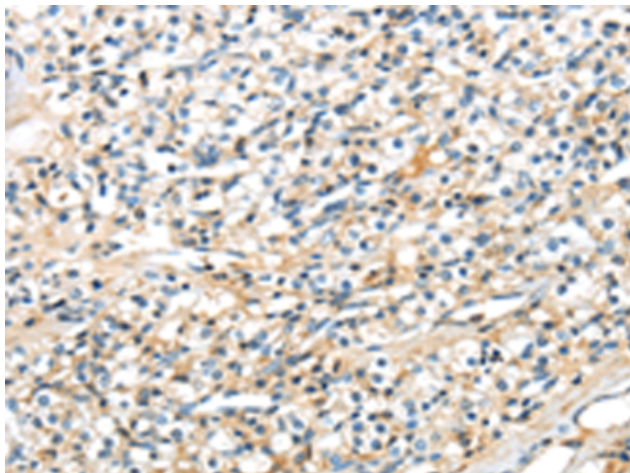
Purification: Antigen affinity purification

Species Reactivity: Human

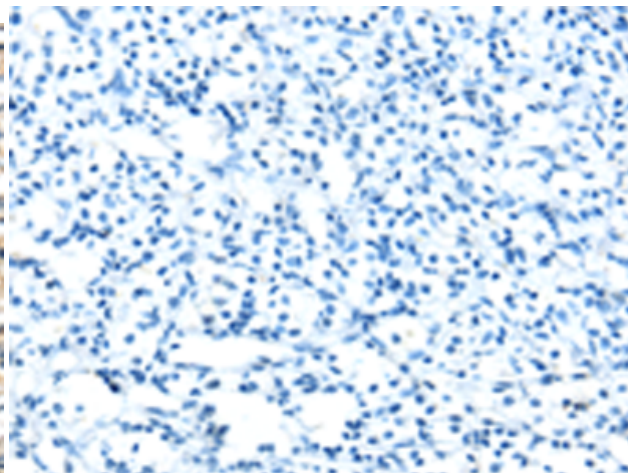
Constituents: PBS (without Mg²⁺ and Ca²⁺), pH 7.4, 150 mM NaCl, 0.05% Sodium Azide and 40% glycerol

Research Areas: Epigenetics and Nuclear Signaling

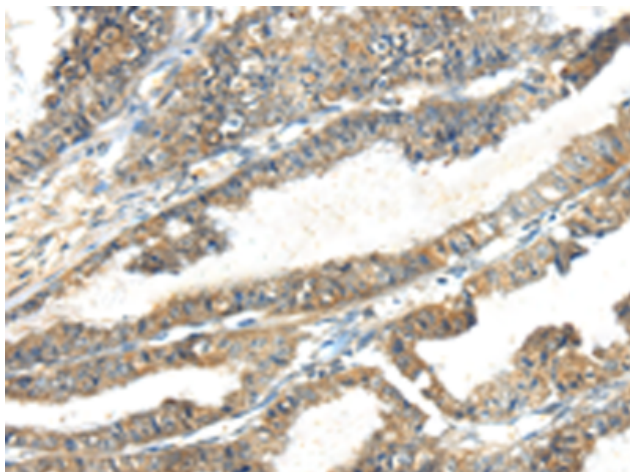
Storage & Shipping: Store at -20°C. Avoid repeated freezing and thawing



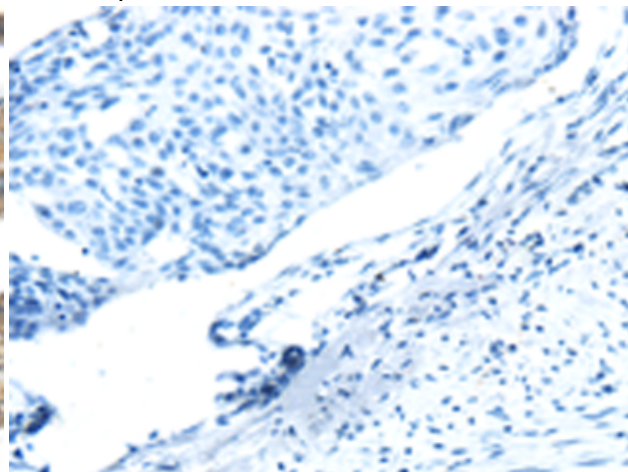
Immunohistochemistry analysis of paraffin embedded Human prostate cancer tissue using 221060(TSPYL6 Antibody) at a dilution of 1/20(Cytoplasm).



In comparison with the IHC on the left, the same paraffin-embedded Human prostate cancer tissue is first treated with the synthetic peptide and then with 221060(Anti-TSPYL6 Antibody) at dilution 1/20.



The image on the left is immunohistochemistry of paraffin-embedded Human esophagus cancer tissue using 221060(Anti-TSPYL6 Antibody) at a dilution of 1/20.



In comparison with the IHC on the left, the same paraffin-embedded Human esophagus cancer tissue is first treated with synthetic peptide and then with D262426(Anti-TSPYL6 Antibody) at dilution 1/20.