

TSR1 RABBIT PAB

Cat.#: S219513

Product Name: Anti-TSR1 Rabbit Polyclonal Antibody

Synonyms:

UNIPROT ID: Q2NL82 (Gene Accession - BC019090)

Background: Required during maturation of the 40S ribosomal subunit in the nucleolus.

Immunogen: Fusion protein of human TSR1

Applications: ELISA, IHC

Recommended Dilutions: IHC: 100-300; ELISA: 5000-10000

Host Species: Rabbit

Clonality: Rabbit Polyclonal

Isotype: Immunogen-specific rabbit IgG

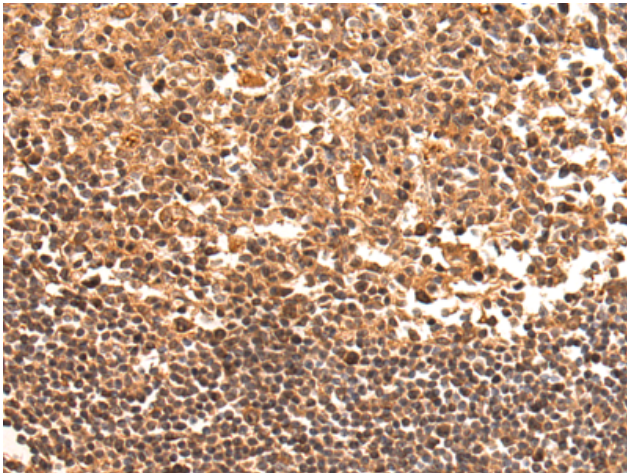
Purification: Antigen affinity purification

Species Reactivity: Human, Mouse

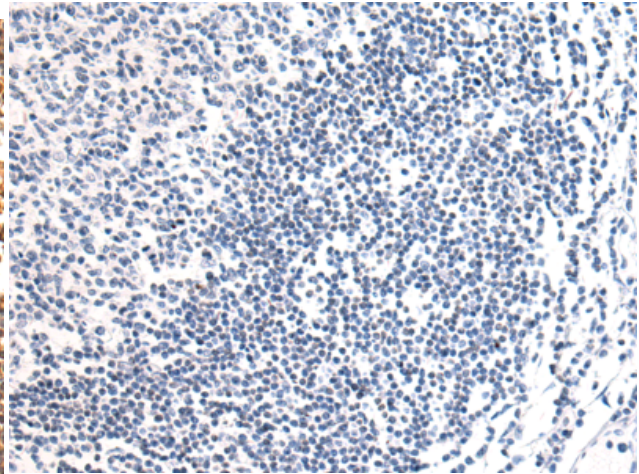
Constituents: PBS (without Mg²⁺ and Ca²⁺), pH 7.4, 150 mM NaCl, 0.05% Sodium Azide and 40% glycerol

Research Areas: Epigenetics and Nuclear Signaling

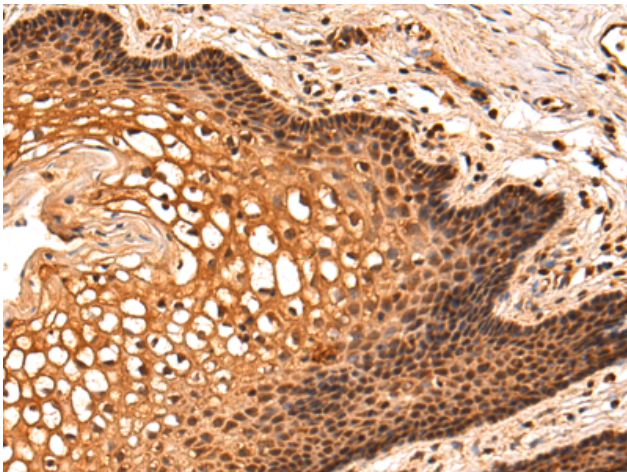
Storage & Shipping: Store at -20°C. Avoid repeated freezing and thawing



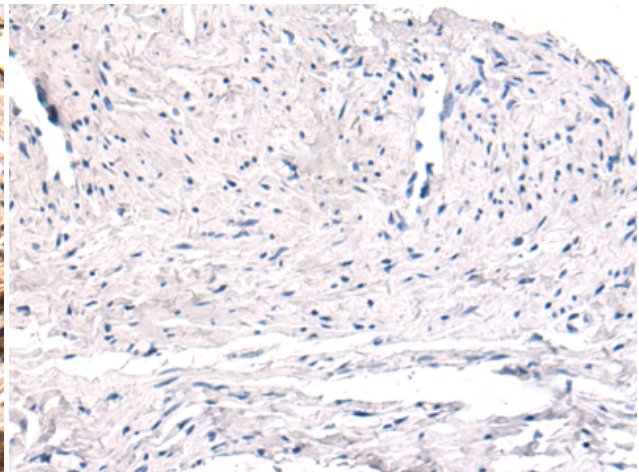
Immunohistochemistry analysis of paraffin embedded Human tonsil tissue using 219513(TSR1 Antibody) at a dilution of 1/70(Nucleus and Cytoplasm).



In comparison with the IHC on the left, the same paraffin-embedded Human tonsil tissue is first treated with the fusion protein and then with 219513(Anti-TSR1 Antibody) at dilution 1/70.



The image on the left is immunohistochemistry of paraffin-embedded Human cervical cancer tissue using 219513(Anti-TSR1 Antibody) at a dilution of 1/70.



In comparison with the IHC on the left, the same paraffin-embedded Human cervical cancer tissue is first treated with fusion protein and then with D227447(Anti-TSR1 Antibody) at dilution 1/70.