

## TUBA1C RABBIT PAB

**Cat.#:** S217956

**Product Name:** Anti-TUBA1C Rabbit Polyclonal Antibody

**Synonyms:** TUBA6; bcm948

**UNIPROT ID:** Q9BQE3 (Gene Accession - BC004949 )

**Background:** Predicted to enable GTP binding activity. Predicted to be a structural constituent of cytoskeleton. Predicted to be involved in microtubule cytoskeleton organization and mitotic cell cycle. Located in microtubule cytoskeleton and nucleus.

**Immunogen:** Fusion protein of human TUBA1C

**Applications:** ELISA, WB, IHC

**Recommended Dilutions:** IHC: 100-300;WB: 1000-5000;ELISA: 5000-10000

**Host Species:** Rabbit

**Clonality:** Rabbit Polyclonal

**Isotype:** Immunogen-specific rabbit IgG

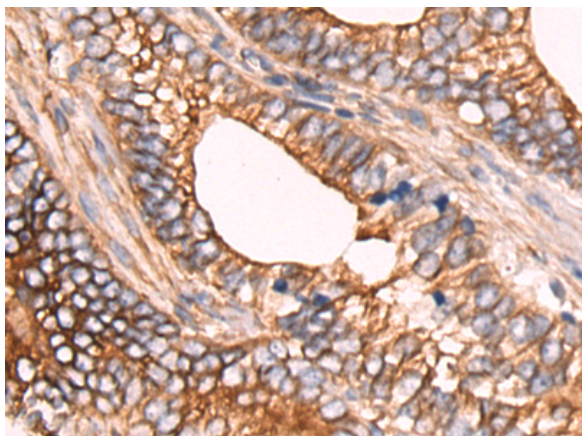
**Purification:** Antigen affinity purification

**Species Reactivity:** Human, Mouse, Rat

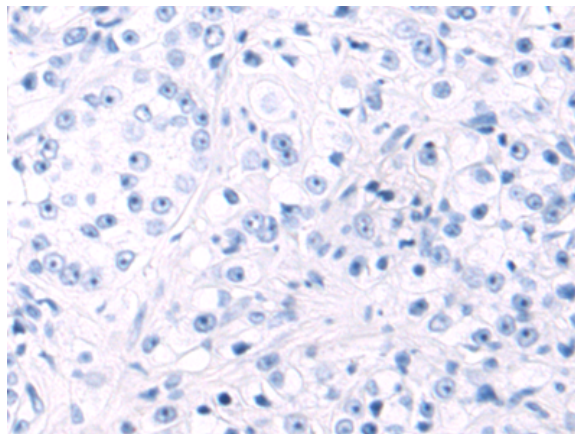
**Constituents:** PBS (without Mg<sup>2+</sup> and Ca<sup>2+</sup>), pH 7.4, 150 mM NaCl, 0.05% Sodium Azide and 40% glycerol

**Research Areas:** Signal Transduction

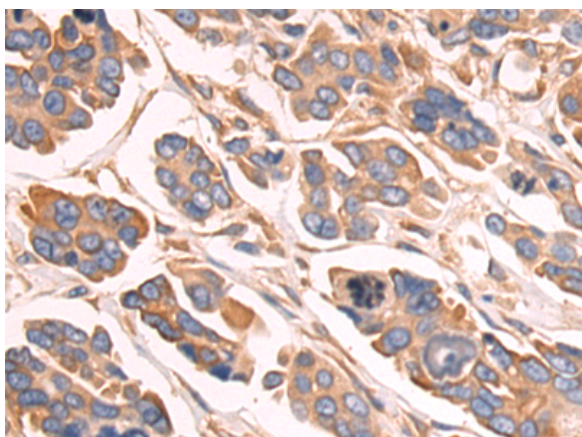
**Storage & Shipping:** Store at -20°C. Avoid repeated freezing and thawing



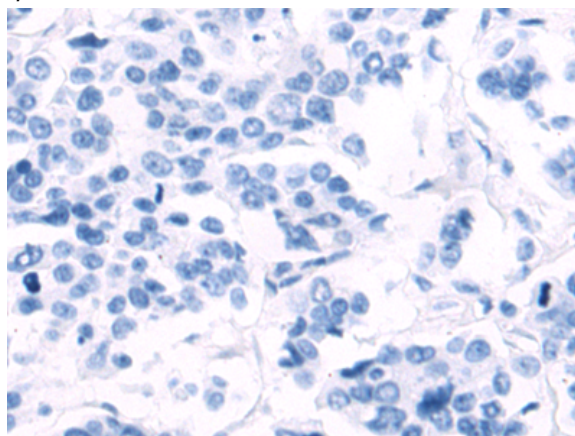
Immunohistochemistry analysis of paraffin embedded Human prostate cancer tissue using 217956(TUBA1C Antibody) at a dilution of 1/160(Cytoplasm).



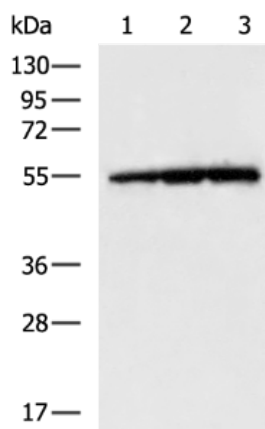
In comparison with the IHC on the left, the same paraffin-embedded Human prostate cancer tissue is first treated with the fusion protein and then with 217956(Anti-TUBA1C Antibody) at dilution 1/160.



The image on the left is immunohistochemistry of paraffin-embedded Human colorectal cancer tissue using 217956(Anti-TUBA1C Antibody) at a dilution of 1/160.



In comparison with the IHC on the left, the same paraffin-embedded Human colorectal cancer tissue is first treated with fusion protein and then with D223443(Anti-TUBA1C Antibody) at dilution 1/160.



Gel: 8%SDS-PAGE, Lysate: 40 µg;  
 Lane 1-3: K562, HeLa, NIH/3T3 cell lysates;  
 Primary antibody: 217956(TUBA1C Antibody) at dilution 1/2400;  
 Secondary antibody: HRP-conjugated Goat anti rabbit IgG at 1/5000 dilution;  
 Exposure time: 1 second



# Product Description

Pioneering GTPase and Oncogene Product Development since 2010

---