

## TUBB RABBIT PAB

**Cat.#:** S211518

**Product Name:** Anti-TUBB Rabbit Polyclonal Antibody

**Synonyms:** M40; TUBB1; TUBB5; CDCBM6; CSCSC1; OK/SW-cl.56

**UNIPROT ID:** P07437 (Gene Accession - BC001938 )

**Background:** This gene encodes a beta tubulin protein. This protein forms a dimer with alpha tubulin and acts as a structural component of microtubules. Mutations in this gene cause cortical dysplasia, complex with other brain malformations 6. Alternative splicing results in multiple splice variants. There are multiple pseudogenes for this gene on chromosomes 1, 6, 7, 8, 9, and 13.

**Immunogen:** Fusion protein of human TUBB

**Applications:** ELISA, WB, IHC

**Recommended Dilutions:** IHC: 25-100;WB: 1000-5000;ELISA: 5000-10000

**Host Species:** Rabbit

**Clonality:** Rabbit Polyclonal

**Isotype:** Immunogen-specific rabbit IgG

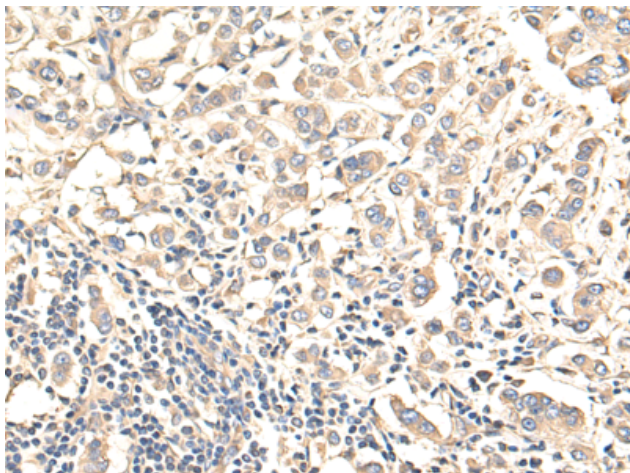
**Purification:** Antigen affinity purification

**Species Reactivity:** Human, Mouse

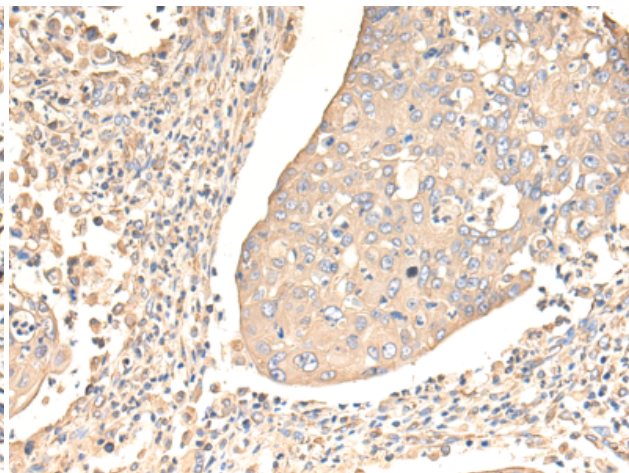
**Constituents:** PBS (without Mg<sup>2+</sup> and Ca<sup>2+</sup>), pH 7.4, 150 mM NaCl, 0.05% Sodium Azide and 40% glycerol

**Research Areas:** Signal Transduction

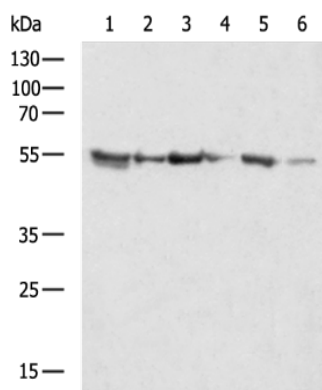
**Storage & Shipping:** Store at -20°C. Avoid repeated freezing and thawing



Immunohistochemistry analysis of paraffin-embedded Human breast cancer tissue using 211518(TUBB Antibody) at a dilution of 1/30(Cytoplasm).



Immunohistochemistry analysis of paraffin-embedded Human bladder cancer tissue using 211518(Anti-TUBB Antibody) at a dilution of 1/30.



Gel: 8%SDS-PAGE, Lysate: 40  $\mu$ g;  
Lane 1-6: 293T, HepG2, Hela, Jurkat, NIH/3T3, MCF7 cell lysates;  
Primary antibody: 211518(TUBB Antibody) at dilution 1/1000;  
Secondary antibody: HRP-conjugated Goat anti rabbit IgG at 1/5000 dilution;  
Exposure time: 20 seconds