

TUBB2A RABBIT PAB

Cat.#: S221611

Product Name: Anti-TUBB2A Rabbit Polyclonal Antibody

Synonyms: TUBB; TUBB2; CDCBM5

UNIPROT ID: Q13885 (Gene Accession - NP_001060)

Background: Microtubules, key participants in processes such as mitosis and intracellular transport, are composed of heterodimers of alpha- and beta-tubulins. The protein encoded by this gene is a beta-tubulin. Defects in this gene are associated with complex cortical dysplasia with other brain malformations-5. Two transcript variants encoding distinct isoforms have been found for this gene.

Immunogen: Synthetic peptide of human TUBB2A

Applications: ELISA, WB, IHC

Recommended Dilutions: IHC: 25-50;WB: 500-2000;ELISA: 5000-10000

Host Species: Rabbit

Clonality: Rabbit Polyclonal

Isotype: Immunogen-specific rabbit IgG

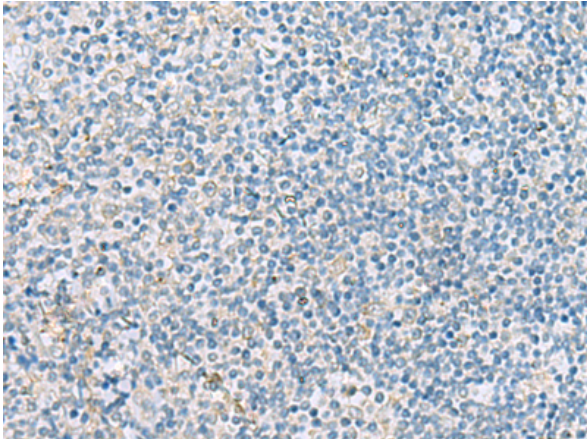
Purification: Antigen affinity purification

Species Reactivity: Human, Mouse, Rat

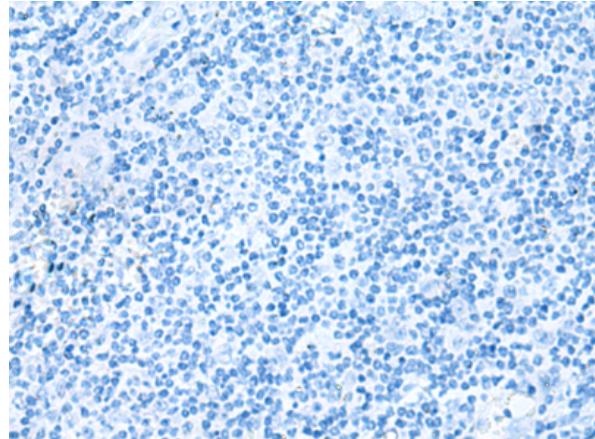
Constituents: PBS (without Mg²⁺ and Ca²⁺), pH 7.4, 150 mM NaCl, 0.05% Sodium Azide and 40% glycerol

Research Areas: Signal Transduction

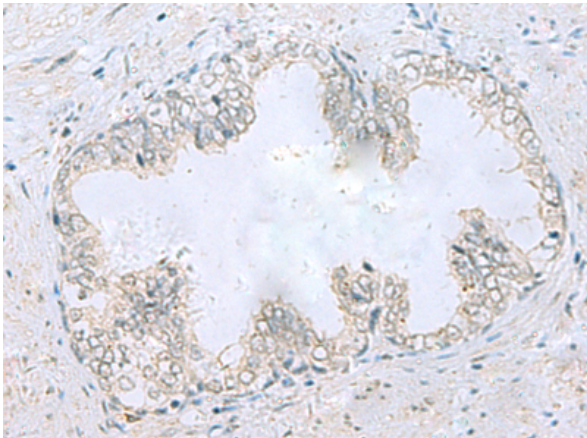
Storage & Shipping: Store at -20°C. Avoid repeated freezing and thawing



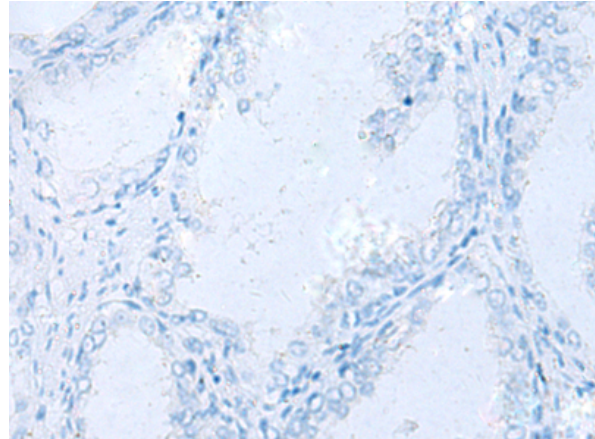
Immunohistochemistry analysis of paraffin embedded Human tonsil tissue using 221611(TUBB2A Antibody) at a dilution of 1/30(Cytoplasm).



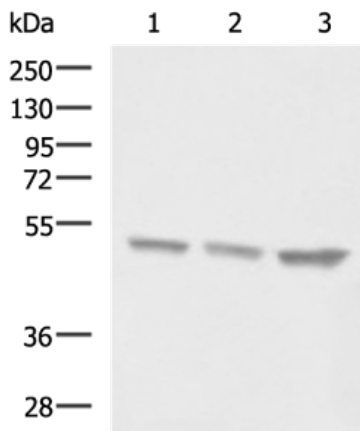
In comparison with the IHC on the left, the same paraffin-embedded Human tonsil tissue is first treated with the synthetic peptide and then with 221611(Anti-TUBB2A Antibody) at dilution 1/30.



The image on the left is immunohistochemistry of paraffin-embedded Human prostate cancer tissue using 221611(Anti-TUBB2A Antibody) at a dilution of 1/30.



In comparison with the IHC on the left, the same paraffin-embedded Human prostate cancer tissue is first treated with synthetic peptide and then with D263270(Anti-TUBB2A Antibody) at dilution 1/30.



Gel: 8%SDS-PAGE, Lysate: 40 µg;
 Lane 1-3: NIH/3T3, Jurkat, 293T cell lysates;
 Primary antibody: 221611(TUBB2A Antibody) at dilution 1/750;
 Secondary antibody: HRP-conjugated Goat anti rabbit IgG at 1/5000 dilution;
 Exposure time: 10 seconds



Product Description

Pioneering GTPase and Oncogene Product Development since 2010
