

TUBGCP2 RABBIT PAB

Cat.#: S220567

Product Name: Anti-TUBGCP2 Rabbit Polyclonal Antibody

Synonyms: GCP2; GCP-2; h103p; hGCP2; SPBC97; Spc97p; hSpc97; Grip103

UNIPROT ID: Q9BSJ2 (Gene Accession - NP_006650)

Background: Gamma-tubulin complex component 2 is a protein that in humans is encoded by the TUBGCP2 gene. It is part of the gamma tubulin complex which is required for microtubule nucleation at the centrosome. TUBGCP2, also known as GCP2 or SPBC97 (spindle pole body protein Spc97 homolog) is a ubiquitously expressed 902 amino acid protein that localizes to the centrosome and is involved in microtubule nucleation.

Immunogen: Synthetic peptide of human TUBGCP2

Applications: ELISA, IHC

Recommended Dilutions: IHC: 25-100; ELISA: 1000-2000

Host Species: Rabbit

Clonality: Rabbit Polyclonal

Isotype: Immunogen-specific rabbit IgG

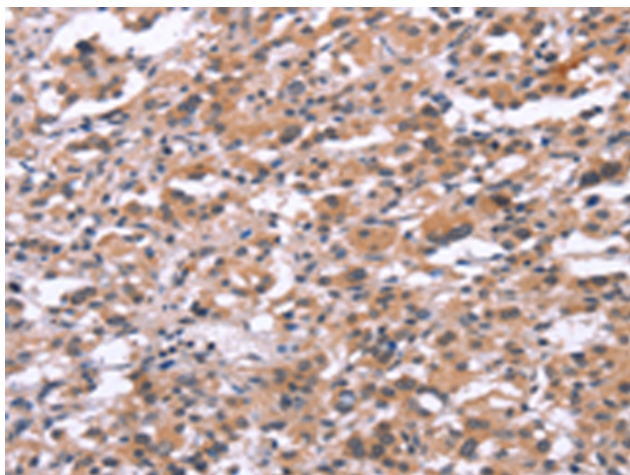
Purification: Antigen affinity purification

Species Reactivity: Human, Mouse

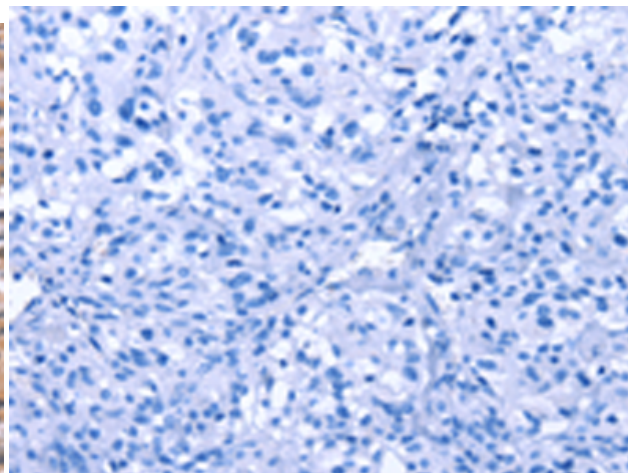
Constituents: PBS (without Mg²⁺ and Ca²⁺), pH 7.4, 150 mM NaCl, 0.05% Sodium Azide and 40% glycerol

Research Areas: Signal Transduction

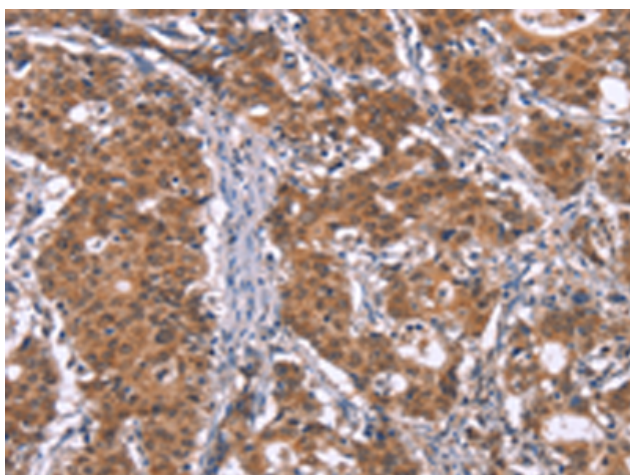
Storage & Shipping: Store at -20°C. Avoid repeated freezing and thawing



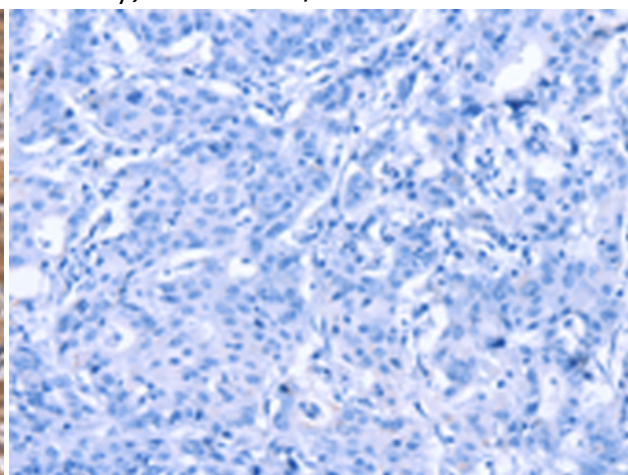
Immunohistochemistry analysis of paraffin embedded Human thyroid cancer tissue using 220567(TUBGCP2 Antibody) at a dilution of 1/15(Cytoplasm or Nucleus).



In comparison with the IHC on the left, the same paraffin-embedded Human thyroid cancer tissue is first treated with the synthetic peptide and then with 220567(Anti-TUBGCP2 Antibody) at dilution 1/15.



The image on the left is immunohistochemistry of paraffin-embedded Human gastric cancer tissue using 220567(Anti-TUBGCP2 Antibody) at a dilution of 1/15.



In comparison with the IHC on the left, the same paraffin-embedded Human gastric cancer tissue is first treated with synthetic peptide and then with D261704(Anti-TUBGCP2 Antibody) at dilution 1/15.