

## TULP2 RABBIT PAB

**Cat.#:** S217957

**Product Name:** Anti-TULP2 Rabbit Polyclonal Antibody

**Synonyms:** CT65; TUBL2

**UNIPROT ID:** O00295 (Gene Accession - BC026070 )

**Background:** TULP2 is a member of a family of tubby-like genes (TULPs) that encode proteins of unknown function. Members of this family have been identified in plants, vertebrates, and invertebrates. The TULP proteins share a conserved C-terminal region of approximately 200 amino acid residues.

**Immunogen:** Fusion protein of human TULP2

**Applications:** ELISA, IHC

**Recommended Dilutions:** IHC: 25-100; ELISA: 2000-5000

**Host Species:** Rabbit

**Clonality:** Rabbit Polyclonal

**Isotype:** Immunogen-specific rabbit IgG

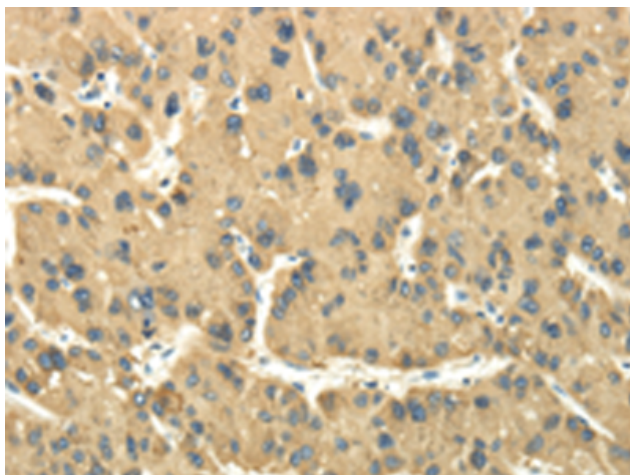
**Purification:** Antigen affinity purification

**Species Reactivity:** Human

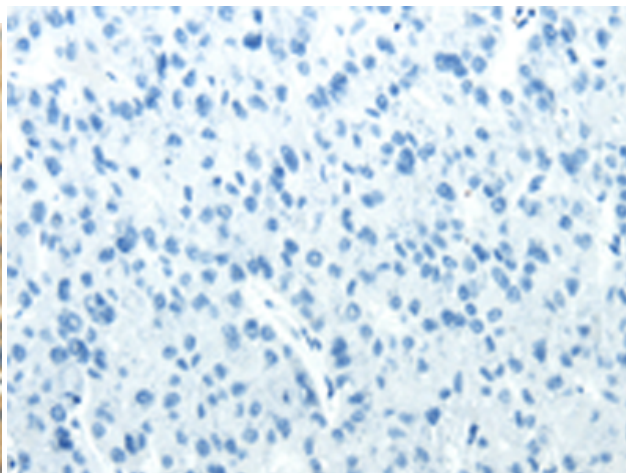
**Constituents:** PBS (without Mg<sup>2+</sup> and Ca<sup>2+</sup>), pH 7.4, 150 mM NaCl, 0.05% Sodium Azide and 40% glycerol

**Research Areas:** Cancer

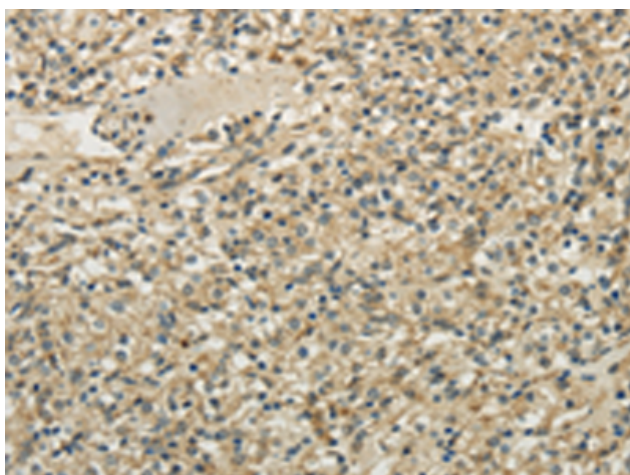
**Storage & Shipping:** Store at -20°C. Avoid repeated freezing and thawing



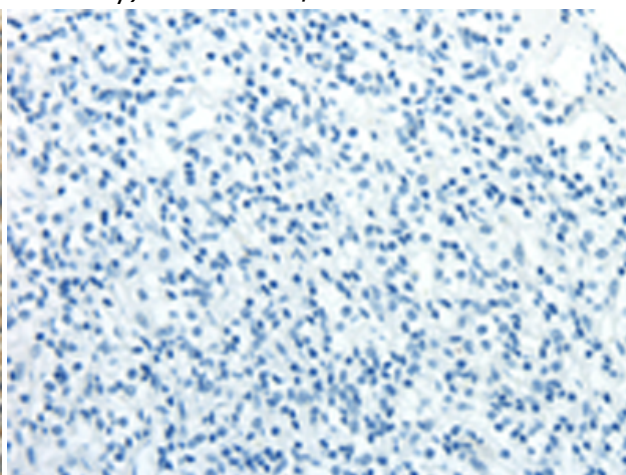
Immunohistochemistry analysis of paraffin embedded Human liver cancer tissue using 217957(TULP2 Antibody) at a dilution of 1/30(Cytoplasm).



In comparison with the IHC on the left, the same paraffin-embedded Human liver cancer tissue is first treated with the fusion protein and then with 217957(Anti-TULP2 Antibody) at dilution 1/30.



The image on the left is immunohistochemistry of paraffin-embedded Human prostate cancer tissue using 217957(Anti-TULP2 Antibody) at a dilution of 1/30.



In comparison with the IHC on the left, the same paraffin-embedded Human prostate cancer tissue is first treated with fusion protein and then with D223444(Anti-TULP2 Antibody) at dilution 1/30.