

TUSC1 RABBIT PAB

Cat.#: S221066

Product Name: Anti-TUSC1 Rabbit Polyclonal Antibody

Synonyms: TSG9; TSG-9

UNIPROT ID: Q2TAM9 (Gene Accession - NP_001004125)

Background: This gene is located within the region of chromosome 9p that harbors tumor suppressor genes critical in carcinogenesis. It is an intronless gene which is downregulated in non-small-cell lung cancer and small-cell lung cancer cell lines, suggesting that it may play a role in lung tumorigenesis.

Immunogen: Synthetic peptide of human TUSC1

Applications: ELISA, WB, IHC

Recommended Dilutions: IHC: 30-150;WB: 200-1000;ELISA: 1000-2000

Host Species: Rabbit

Clonality: Rabbit Polyclonal

Isotype: Immunogen-specific rabbit IgG

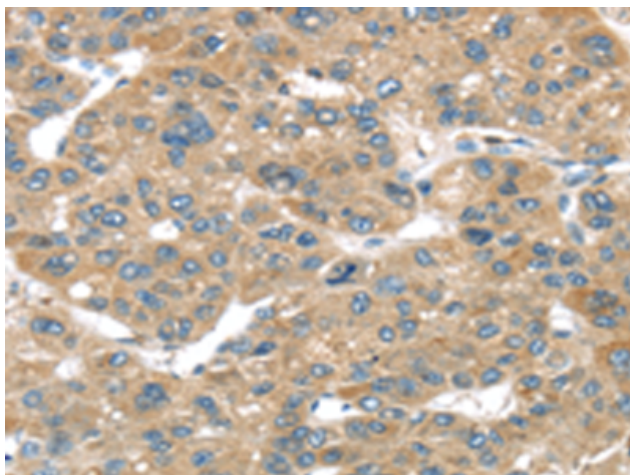
Purification: Antigen affinity purification

Species Reactivity: Human

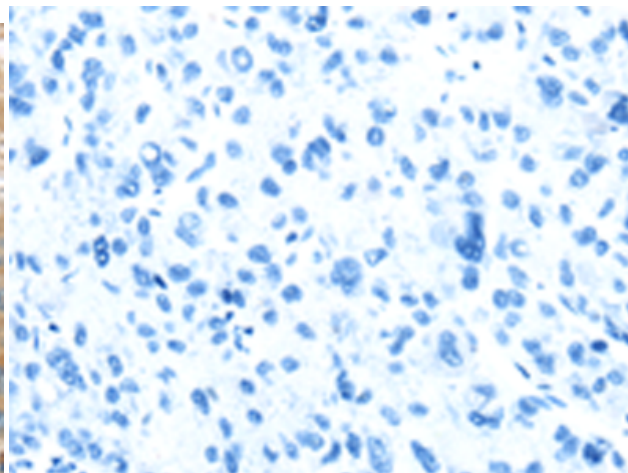
Constituents: PBS (without Mg²⁺ and Ca²⁺), pH 7.4, 150 mM NaCl, 0.05% Sodium Azide and 40% glycerol

Research Areas: Cancer

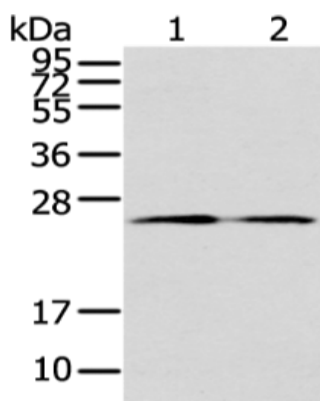
Storage & Shipping: Store at -20°C. Avoid repeated freezing and thawing



Immunohistochemistry analysis of paraffin embedded Human liver cancer tissue using 221066(TUSC1 Antibody) at a dilution of 1/45(Cytoplasm).



In comparison with the IHC on the left, the same paraffin-embedded Human liver cancer tissue is first treated with the synthetic peptide and then with 221066(Anti-TUSC1 Antibody) at dilution 1/45.



Gel: 12%SDS-PAGE, Lysate: 40 μ g;
Lane 1-2: PC3 cell and human colon cancer tissue;
Primary antibody: 221066(TUSC1 Antibody) at dilution 1/200;
Secondary antibody: Goat anti rabbit IgG at 1/8000 dilution;
Exposure time: 1 minute