

## TUSC2 RABBIT PAB

**Cat.#:** S217958

**Product Name:** Anti-TUSC2 Rabbit Polyclonal Antibody

**Synonyms:** PAP; FUS1; PDAP2; C3orf11

**UNIPROT ID:** O75896 (Gene Accession - BC023976 )

**Background:** This gene is a highly conserved lung cancer candidate gene. No other information about this gene is currently available.

**Immunogen:** Full length fusion protein

**Applications:** ELISA, IHC

**Recommended Dilutions:** IHC: 30-150; ELISA: 2000-10000

**Host Species:** Rabbit

**Clonality:** Rabbit Polyclonal

**Isotype:** Immunogen-specific rabbit IgG

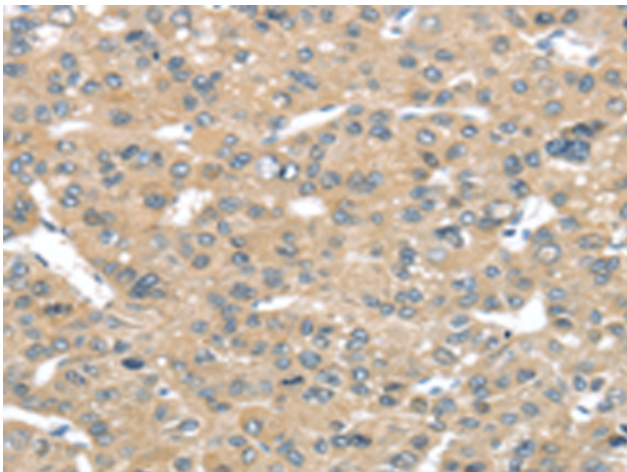
**Purification:** Antigen affinity purification

**Species Reactivity:** Human, Mouse

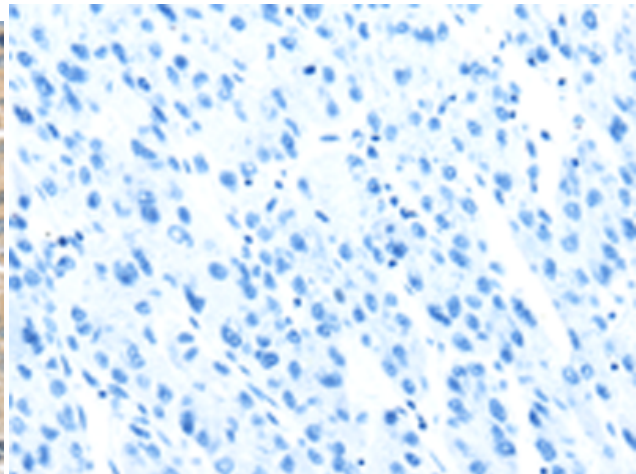
**Constituents:** PBS (without Mg<sup>2+</sup> and Ca<sup>2+</sup>), pH 7.4, 150 mM NaCl, 0.05% Sodium Azide and 40% glycerol

**Research Areas:** Epigenetics and Nuclear Signaling, Cancer

**Storage & Shipping:** Store at -20°C. Avoid repeated freezing and thawing



Immunohistochemistry analysis of paraffin embedded Human liver cancer tissue using 217958(TUSC2 Antibody) at a dilution of 1/50(Cytoplasm).



In comparison with the IHC on the left, the same paraffin-embedded Human liver cancer tissue is first treated with the fusion protein and then with 217958(Anti-TUSC2 Antibody) at dilution 1/50.