

TWF2 RABBIT PAB

Cat.#: S217109

Product Name: Anti-TWF2 Rabbit Polyclonal Antibody

Synonyms: A6r; A6RP; PTK9L; MSTP011

UNIPROT ID: Q6IBS0 (Gene Accession - BC016452)

Background: The protein encoded by this gene was identified by its interaction with the catalytic domain of protein kinase C-zeta. The encoded protein contains an actin-binding site and an ATP-binding site. It is most closely related to twinfilin (PTK9), a conserved actin monomer-binding protein.

Immunogen: Fusion protein of human TWF2

Applications: ELISA, WB, IHC

Recommended Dilutions: IHC: 25-100;WB: 500-2000;ELISA: 2000-5000

Host Species: Rabbit

Clonality: Rabbit Polyclonal

Isotype: Immunogen-specific rabbit IgG

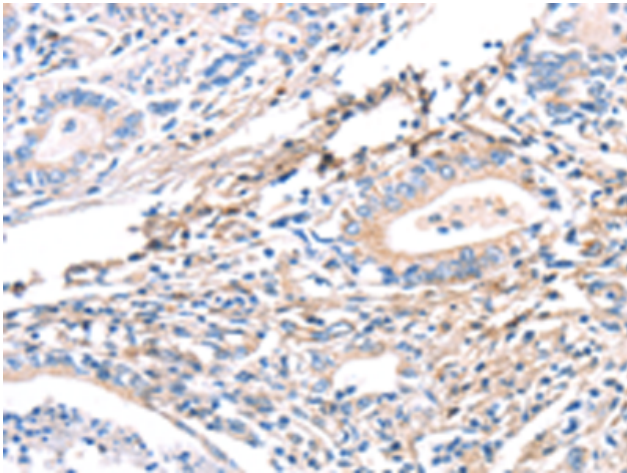
Purification: Antigen affinity purification

Species Reactivity: Human, Mouse

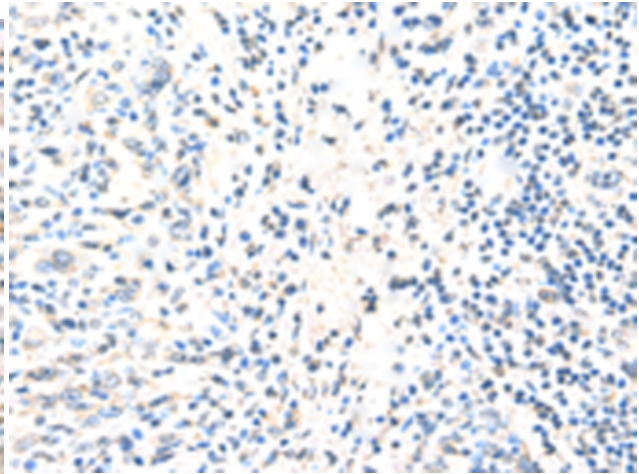
Constituents: PBS (without Mg²⁺ and Ca²⁺), pH 7.4, 150 mM NaCl, 0.05% Sodium Azide and 40% glycerol

Research Areas: Signal Transduction, Neuroscience

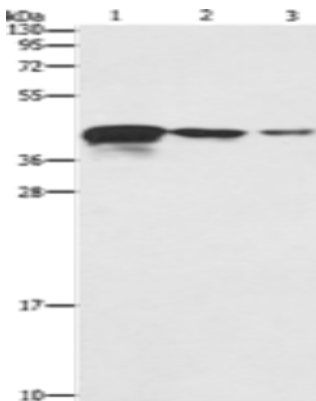
Storage & Shipping: Store at -20°C. Avoid repeated freezing and thawing



Immunohistochemistry analysis of paraffin embedded Human gastric cancer tissue using 217109 (TWF2 Antibody) at a dilution of 1/40 (Cytoplasm).



In comparison with the IHC on the left, the same paraffin-embedded Human gastric cancer tissue is first treated with the fusion protein and then with 217109 (Anti-TWF2 Antibody) at dilution 1/40.



Gel: 10% SDS-PAGE, Lysate: 40 µg;
Lane 1-3: Human endometrial carcinoma tissue, A172 cells, U937 cells;
Primary antibody: 217109 (TWF2 Antibody) at dilution 1/800;
Secondary antibody: Goat anti rabbit IgG at 1/8000 dilution;
Exposure time: 20 seconds