

## TWSG1 RABBIT PAB

**Cat.#:** S218185

**Product Name:** Anti-TWSG1 Rabbit Polyclonal Antibody

**Synonyms:** TSG

**UNIPROT ID:** Q9GZX9 (Gene Accession - BC020490 )

**Background:** Enables transforming growth factor beta binding activity. Involved in several processes, including negative regulation of CD4-positive, alpha-beta T cell proliferation; positive regulation of pathway-restricted SMAD protein phosphorylation; and transforming growth factor beta receptor signaling pathway. Predicted to be located in extracellular region. Predicted to be active in extracellular space. [provided by Alliance of Genome Resources, Apr 2022]

**Immunogen:** Fusion protein of human TWSG1

**Applications:** ELISA, IHC

**Recommended Dilutions:** IHC: 50–200; ELISA: 5000–10000

**Host Species:** Rabbit

**Clonality:** Rabbit Polyclonal

**Isotype:** Immunogen-specific rabbit IgG

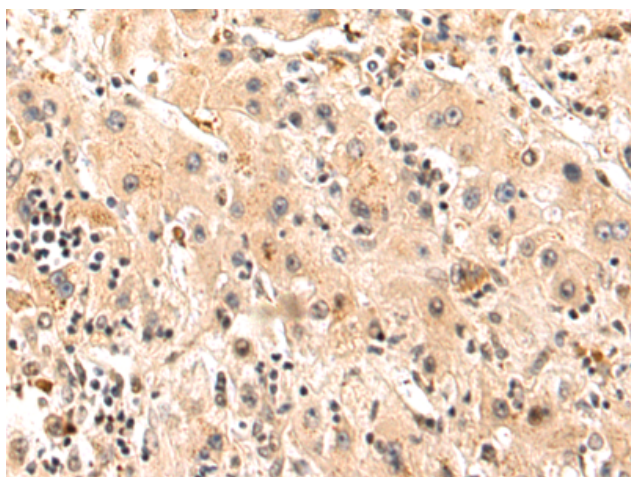
**Purification:** Antigen affinity purification

**Species Reactivity:** Human, Mouse

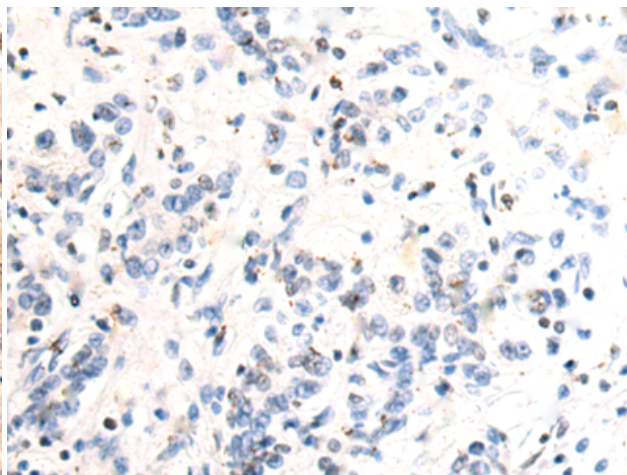
**Constituents:** PBS (without Mg<sup>2+</sup> and Ca<sup>2+</sup>), pH 7.4, 150 mM NaCl, 0.05% Sodium Azide and 40% glycerol

**Research Areas:** Neuroscience

**Storage & Shipping:** Store at -20°C. Avoid repeated freezing and thawing



Immunohistochemistry analysis of paraffin embedded Human liver cancer tissue using 218185(TWSG1 Antibody) at a dilution of 1/80(Secreted).



In comparison with the IHC on the left, the same paraffin-embedded Human liver cancer tissue is first treated with the fusion protein and then with 218185(Anti-TWSG1 Antibody) at dilution 1/80.