

TXLNA RABBIT PAB

Cat.#: S217536

Product Name: Anti-TXLNA Rabbit Polyclonal Antibody

Synonyms: IL14; TXLN

UNIPROT ID: P40222 (Gene Accession - BC103823)

Background: δ -taxilin is a novel binding partner of the syntaxin family which is implicated in intracellular vesicle trafficking. Through its C-terminal coiled-coil region, δ -taxilin interacts with the nascent polypeptide-associated complex (NAC), which acts as a transcriptional coactivator.

Immunogen: Fusion protein of human TXLNA

Applications: ELISA, WB, IHC

Recommended Dilutions: IHC: 25-100;WB: 500-2000;ELISA: 2000-5000

Host Species: Rabbit

Clonality: Rabbit Polyclonal

Isotype: Immunogen-specific rabbit IgG

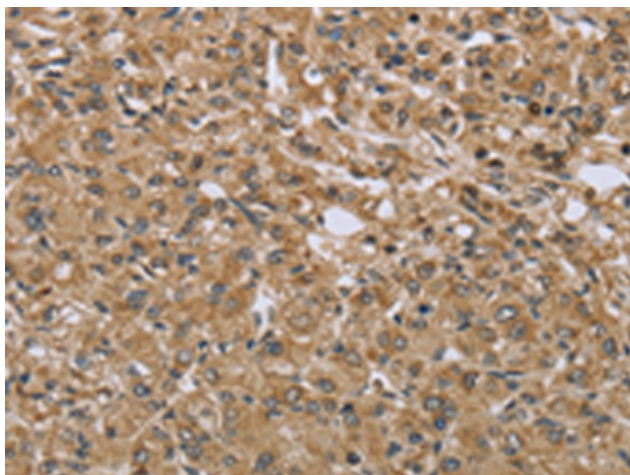
Purification: Antigen affinity purification

Species Reactivity: Human, Mouse

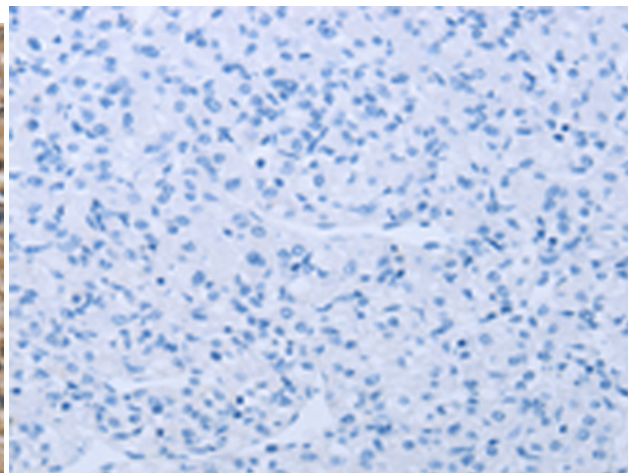
Constituents: PBS (without Mg²⁺ and Ca²⁺), pH 7.4, 150 mM NaCl, 0.05% Sodium Azide and 40% glycerol

Research Areas: Signal Transduction, Immunology

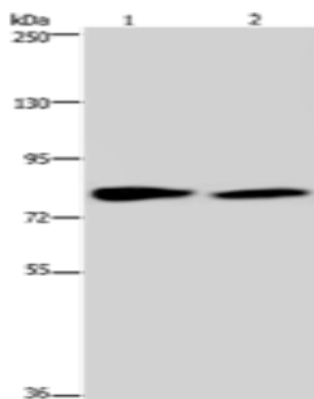
Storage & Shipping: Store at -20°C. Avoid repeated freezing and thawing



Immunohistochemistry analysis of paraffin embedded Human prostate cancer tissue using 217536(TXLNA Antibody) at a dilution of 1/30(Cytoplasm).



In comparison with the IHC on the left, the same paraffin-embedded Human prostate cancer tissue is first treated with the fusion protein and then with 217536(Anti-TXLNA Antibody) at dilution 1/30.



Gel: 6%SDS-PAGE, Lysate: 40 μ g;
Lane 1-2: K562 cells, 293T cells;
Primary antibody: 217536(TXLNA Antibody) at dilution 1/350;
Secondary antibody: Goat anti rabbit IgG at 1/8000 dilution;
Exposure time: 10 seconds