

## UBA1 RABBIT PAB

**Cat.#:** S221072

**Product Name:** Anti-UBA1 Rabbit Polyclonal Antibody

**Synonyms:** AIS9; AIST; GXPI; UBE1; AIS9T; AMCX1; POC20; SMAX2; UBA1A; UBE1X; CFAP124

**UNIPROT ID:** P22314 (Gene Accession - NP\_695012 )

**Background:** The protein encoded by this gene catalyzes the first step in ubiquitin conjugation to mark cellular proteins for degradation. This gene complements an X-linked mouse temperature-sensitive defect in DNA synthesis, and thus may function in DNA repair. It is part of a gene cluster on chromosome Xp11.23. Alternatively spliced transcript variants that encode the same protein have been described.

**Immunogen:** Synthetic peptide of human UBA1

**Applications:** ELISA, WB, IHC

**Recommended Dilutions:** IHC: 30-150;WB: 500-2000;ELISA: 2000-5000

**Host Species:** Rabbit

**Clonality:** Rabbit Polyclonal

**Isotype:** Immunogen-specific rabbit IgG

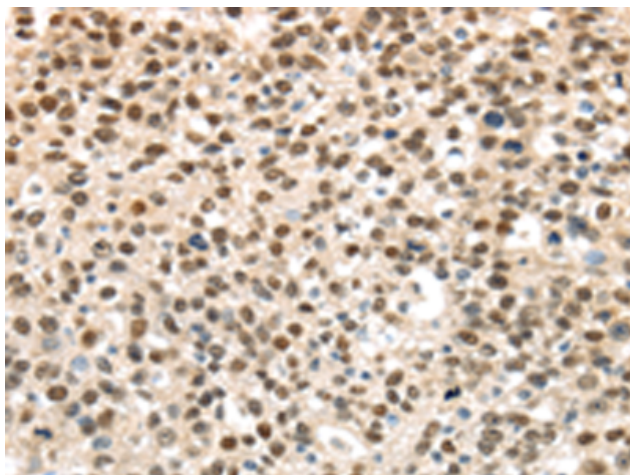
**Purification:** Antigen affinity purification

**Species Reactivity:** Human, Mouse, Rat

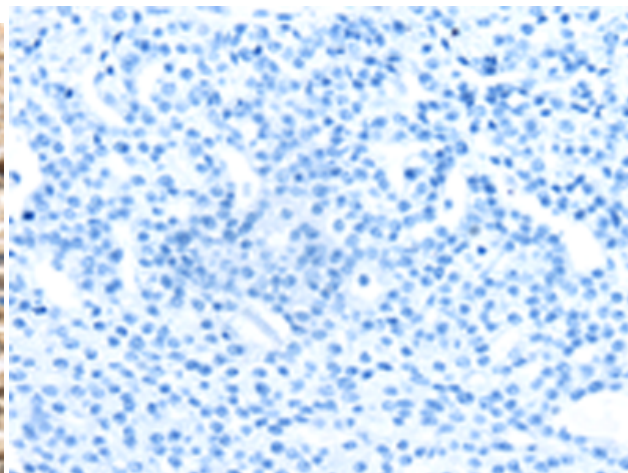
**Constituents:** PBS (without Mg<sup>2+</sup> and Ca<sup>2+</sup>), pH 7.4, 150 mM NaCl, 0.05% Sodium Azide and 40% glycerol

**Research Areas:** Epigenetics and Nuclear Signaling, Cell Biology

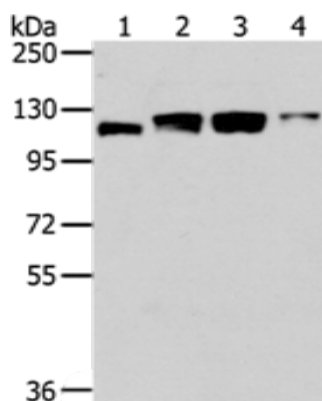
**Storage & Shipping:** Store at -20°C. Avoid repeated freezing and thawing



Immunohistochemistry analysis of paraffin embedded Human breast cancer tissue using 221072(UBA1 Antibody) at a dilution of 1/40(Nucleus).



In comparison with the IHC on the left, the same paraffin-embedded Human breast cancer tissue is first treated with the synthetic peptide and then with 221072(Anti-UBA1 Antibody) at dilution 1/40.



Gel: 6%SDS-PAGE, Lysate: 40  $\mu$ g;  
Lane 1-4: Human fetal brain tissue, 231 cells,  
293T cells, Hela cells;  
Primary antibody: 221072(UBA1 Antibody) at  
dilution 1/400;  
Secondary antibody: Goat anti rabbit IgG at  
1/8000 dilution;  
Exposure time: 1 minute