

## UBA2 RABBIT MAB

**Cat.#:** N263045

**Product Name:** Anti-UBA2 Rabbit Monoclonal Antibody

**Synonyms:** UBA2; SAE2; UBLE1B; HRIHFB2115; SUMO-activating enzyme subunit 2; Anthracycline-associated resistance ARX; Ubiquitin-like 1-activating enzyme E1B

**UNIPROT ID:** Q9UBT2

**Background:** The heterodimer acts as a E1 ligase for SUMO1, SUMO2, SUMO3, and probably SUMO4. It mediates ATP-dependent activation of SUMO proteins followed by formation of a thioester bond between a SUMO protein and a conserved active site cysteine residue on UBA2/SAE2.

**Immunogen:** A synthetic peptide of human UBA2

**Applications:** WB, ICC/IF, IP

**Recommended Dilutions:** WB: 1/500-1/1000 IF: 1/50-1/200 IP: 1/20

**Host Species:** Rabbit

**Clonality:** Rabbit Monoclonal

**Clone ID:** R08-6D4

**MW:** Calculated MW: 71 kDa; Observed MW: 90 kDa

**Isotype:** IgG

**Purification:** Affinity Purified

**Species Reactivity:** Human, Rat

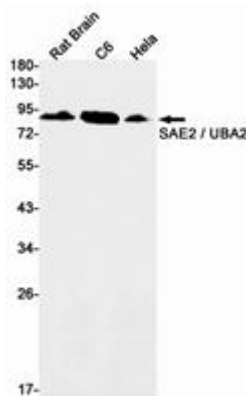
**Conjugation:** Unconjugated

**Modification:** Unmodified

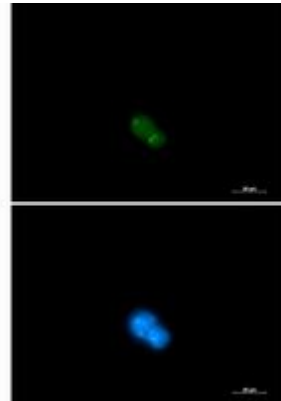
**Constituents:** PBS (without Mg<sup>2+</sup> and Ca<sup>2+</sup>), pH 7.3 containing 50% glycerol, 0.5% BSA and 0.02% sodium azide

**Research Areas:** Cell Biology

**Storage & Shipping:** Store at -20°C. Avoid repeated freezing and thawing



Western blot analysis of SAE2 / UBA2 in rat Brain, C6, HeLa lysates using SAE2 / UBA2 antibody.



Immunocytochemistry analysis of UBA2 (green) in 293 using UBA2 antibody, and DAPI (blue).