

## UBD RABBIT PAB

**Cat.#:** S218981

**Product Name:** Anti-UBD Rabbit Polyclonal Antibody

**Synonyms:** FAT10; UBD-3; GABBR1

**UNIPROT ID:** O15205 (Gene Accession - BC012472 )

**Background:** This gene encodes a protein which contains two ubiquitin-like domains and appears to have similar function to ubiquitin. Through covalent attachment, the encoded protein targets other proteins for 26S proteasome degradation. This protein has been implicated to function in many cellular processes, including caspase-dependent apoptosis, formation of aggresomes, mitotic regulation, and dendritic cell maturation. Upregulation of this gene may promote inflammation in chronic kidney disease and has been observed in many cancer types.

**Immunogen:** Fusion protein of human UBD

**Applications:** ELISA, IHC

**Recommended Dilutions:** IHC: 50-300; ELISA: 5000-10000

**Host Species:** Rabbit

**Clonality:** Rabbit Polyclonal

**Isotype:** Immunogen-specific rabbit IgG

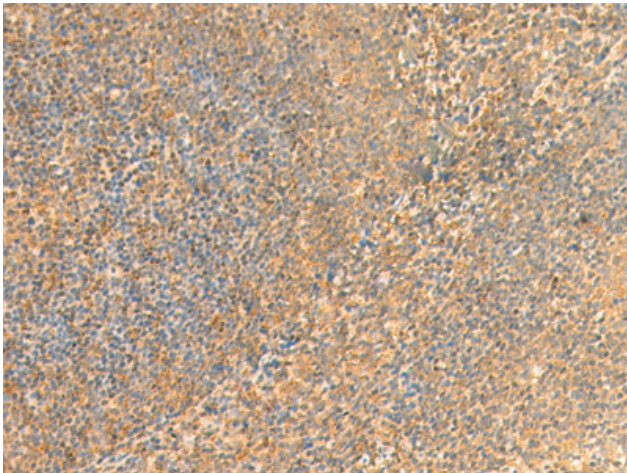
**Purification:** Antigen affinity purification

**Species Reactivity:** Human

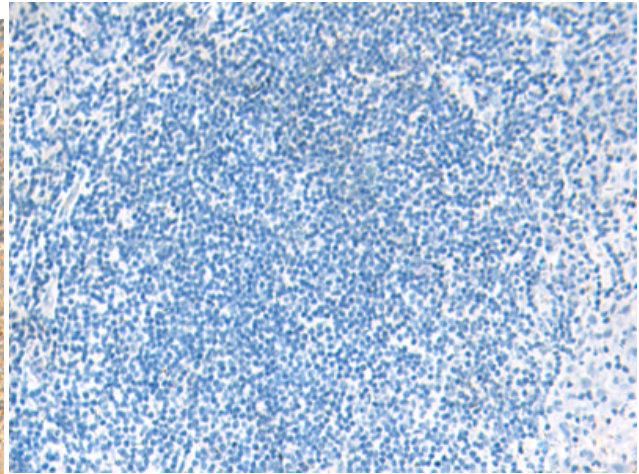
**Constituents:** PBS (without Mg<sup>2+</sup> and Ca<sup>2+</sup>), pH 7.4, 150 mM NaCl, 0.05% Sodium Azide and 40% glycerol

**Research Areas:** Cell Biology, Immunology

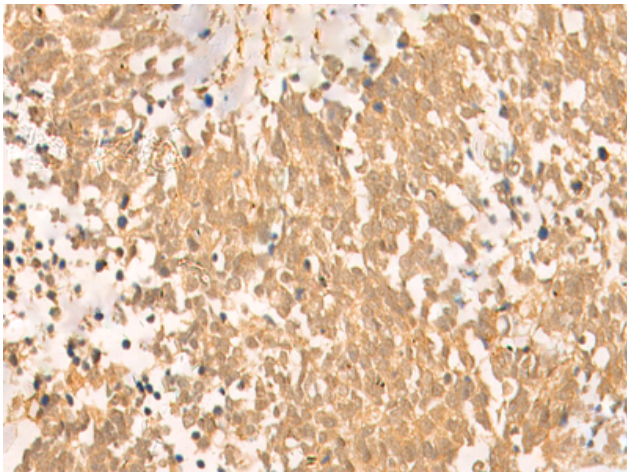
**Storage & Shipping:** Store at -20°C. Avoid repeated freezing and thawing



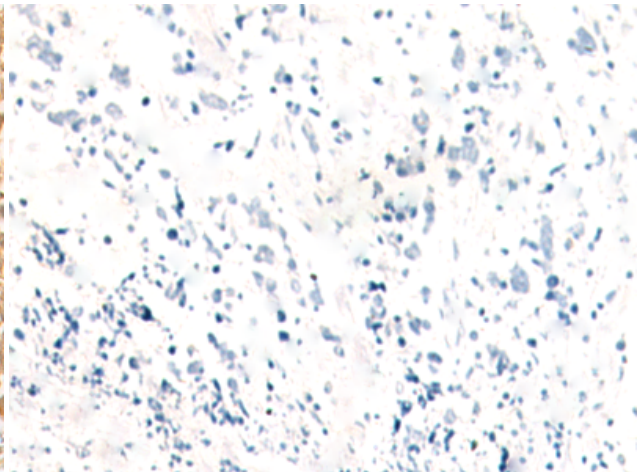
Immunohistochemistry analysis of paraffin embedded Human tonsil tissue using 218981(UBD Antibody) at a dilution of 1/50(Cytoplasm or Nucleus).



In comparison with the IHC on the left, the same paraffin-embedded Human tonsil tissue is first treated with the fusion protein and then with 218981(Anti-UBD Antibody) at dilution 1/50.



The image on the left is immunohistochemistry of paraffin-embedded Human lung cancer tissue using 218981(Anti-UBD Antibody) at a dilution of 1/50.



In comparison with the IHC on the left, the same paraffin-embedded Human lung cancer tissue is first treated with fusion protein and then with D225602(Anti-UBD Antibody) at dilution 1/50.