

## UBE2N RABBIT PAB

**Cat.#:** S215332

**Product Name:** Anti-UBE2N Rabbit Polyclonal Antibody

**Synonyms:** UBC13; Ubch13; HEL-S-71; Ubch-ben; UBCHBEN; UBC13

**UNIPROT ID:** P61088 (Gene Accession - NP\_003339 )

**Background:** The modification of proteins with ubiquitin is an important cellular mechanism for targeting abnormal or short-lived proteins for degradation. Ubiquitination involves at least three classes of enzymes: ubiquitin-activating enzymes, or E1s, ubiquitin-conjugating enzymes, or E2s, and ubiquitin-protein ligases, or E3s. This gene encodes a member of the E2 ubiquitin-conjugating enzyme family. Studies in mouse suggest that this protein plays a role in DNA postreplication repair.

**Immunogen:** Synthetic peptide of human UBE2N

**Applications:** ELISA, WB, IHC

**Recommended Dilutions:** IHC: 50-200;WB: 500-2000;ELISA: 5000-10000

**Host Species:** Rabbit

**Clonality:** Rabbit Polyclonal

**Isotype:** Immunogen-specific rabbit IgG

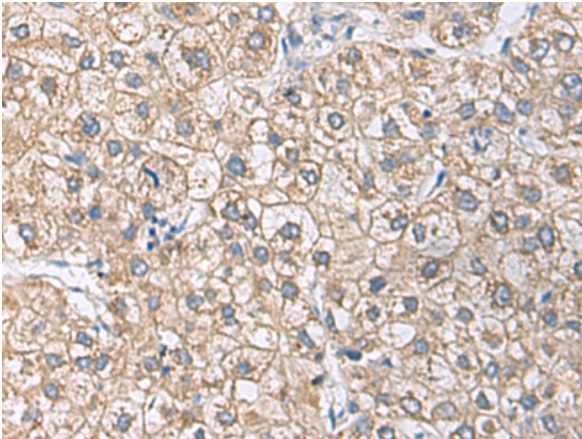
**Purification:** Antigen affinity purification

**Species Reactivity:** Human, Mouse, Rat

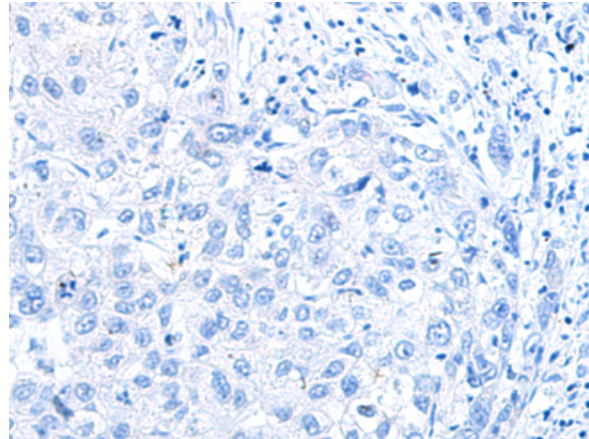
**Constituents:** PBS (without Mg<sup>2+</sup> and Ca<sup>2+</sup>), pH 7.4, 150 mM NaCl, 0.05% Sodium Azide and 40% glycerol

**Research Areas:** Epigenetics and Nuclear Signaling, Cell Biology, Immunology

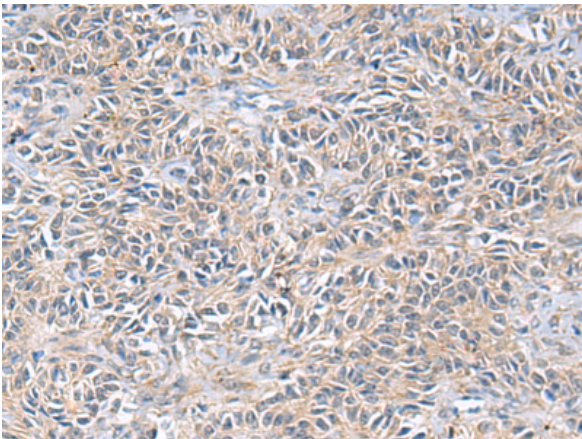
**Storage & Shipping:** Store at -20°C. Avoid repeated freezing and thawing



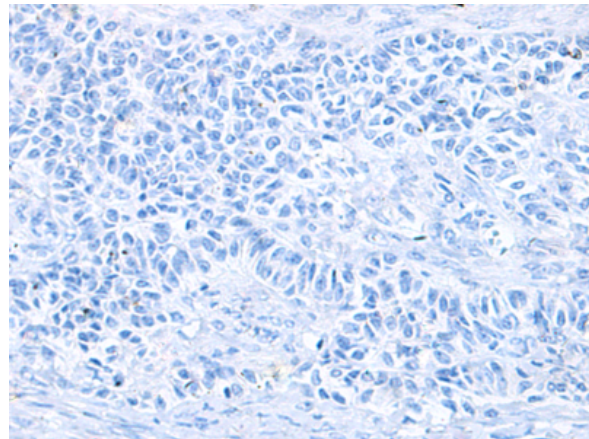
Immunohistochemistry analysis of paraffin embedded Human liver cancer tissue using 215332(UBE2N Antibody) at a dilution of 1/55(Cytoplasm).



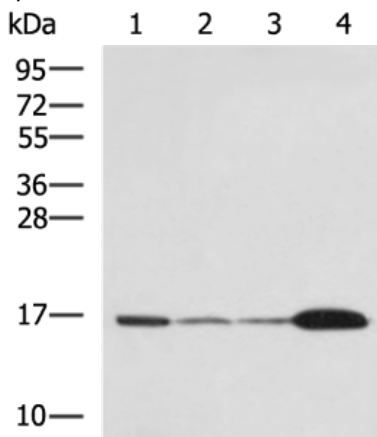
In comparison with the IHC on the left, the same paraffin-embedded Human liver cancer tissue is first treated with the synthetic peptide and then with 215332(Anti-UBE2N Antibody) at dilution 1/55.



The image on the left is immunohistochemistry of paraffin-embedded Human ovarian cancer tissue using 215332(Anti-UBE2N Antibody) at a dilution of 1/55.



In comparison with the IHC on the left, the same paraffin-embedded Human ovarian cancer tissue is first treated with synthetic peptide and then with D163219(Anti-UBE2N Antibody) at dilution 1/55.



Gel: 12%SDS-PAGE, Lysate: 40 µg;  
 Lane 1-5: Mouse brain tissue, Hela cell, LNCAP cell,  
 HepG2 cell, Jurkat cell lysates;  
 Primary antibody: 215332(UBE2N Antibody) at  
 dilution 1/800;  
 Secondary antibody: HRP-conjugated Goat anti  
 rabbit IgG at 1/5000 dilution;  
 Exposure time: 30 seconds



# Product Description

Pioneering GTPase and Oncogene Product Development since 2010

---