

UBE2R2 RABBIT PAB

Cat.#: S218306

Product Name: Anti-UBE2R2 Rabbit Polyclonal Antibody

Synonyms: UBC3B; CDC34B; E2-CDC34B

UNIPROT ID: Q712K3 (Gene Accession - BC004862)

Background: Protein kinase CK2 is a ubiquitous and pleiotropic Ser/Thr protein kinase involved in cell growth and transformation. This gene encodes a protein similar to the E2 ubiquitin conjugating enzyme UBC3/CDC34. Studies suggest that CK2-dependent phosphorylation of this ubiquitin-conjugating enzyme functions by regulating beta-TrCP substrate recognition and induces its interaction with beta-TrCP, enhancing beta-catenin degradation.

Immunogen: Fusion protein of human UBE2R2

Applications: ELISA, IHC

Recommended Dilutions: IHC: 150-300; ELISA: 5000-10000

Host Species: Rabbit

Clonality: Rabbit Polyclonal

Isotype: Immunogen-specific rabbit IgG

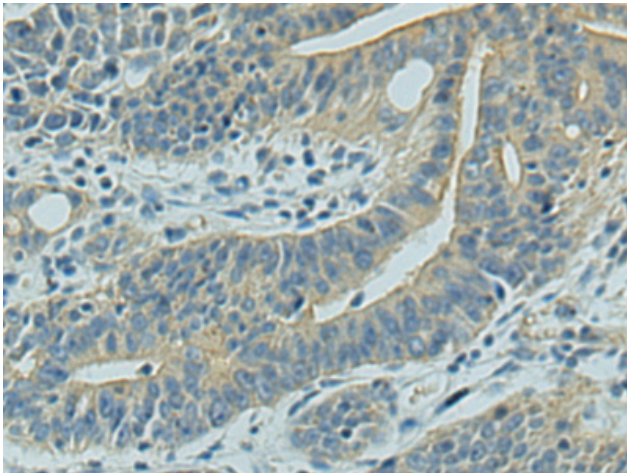
Purification: Antigen affinity purification

Species Reactivity: Human, Mouse

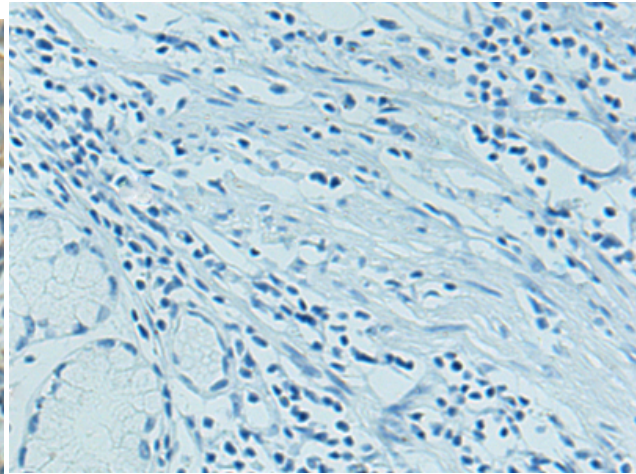
Constituents: PBS (without Mg²⁺ and Ca²⁺), pH 7.4, 150 mM NaCl, 0.05% Sodium Azide and 40% glycerol

Research Areas: Epigenetics and Nuclear Signaling, Cell Biology

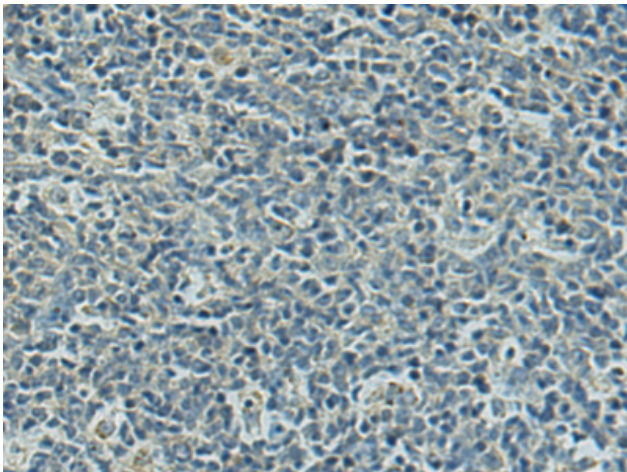
Storage & Shipping: Store at -20°C. Avoid repeated freezing and thawing



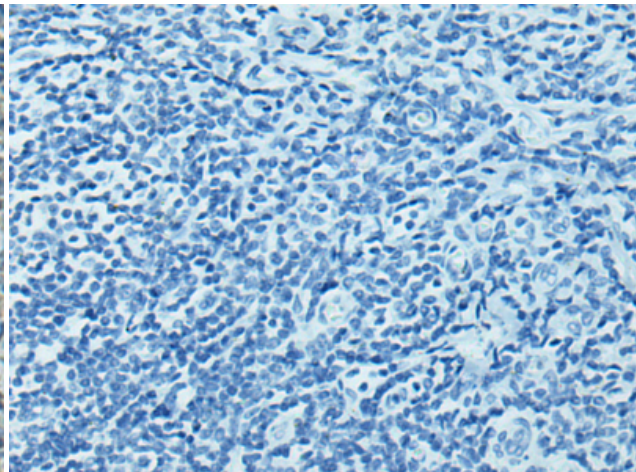
Immunohistochemistry analysis of paraffin-embedded Human gastric cancer tissue using 218306(UBE2R2 Antibody) at a dilution of 1/180(Cytoplasm).



In comparison with the IHC on the left, the same paraffin-embedded Human gastric cancer tissue is first treated with the fusion protein and then with 218306(Anti-UBE2R2 Antibody) at dilution 1/180.



The image on the left is immunohistochemistry of paraffin-embedded Human tonsil tissue using 218306(Anti-UBE2R2 Antibody) at a dilution of 1/180.



In comparison with the IHC on the left, the same paraffin-embedded Human tonsil tissue is first treated with fusion protein and then with D224131(Anti-UBE2R2 Antibody) at dilution 1/180.