

UBE2V1 RABBIT PAB

Cat.#: S218310

Product Name: Anti-UBE2V1 Rabbit Polyclonal Antibody

Synonyms: CIR1; UEV1; CROC1; UBE2V; UEV-1; UEV1A; CROC-1

UNIPROT ID: Q13404 (Gene Accession - BC000468)

Background: Ubiquitin-conjugating E2 enzyme variant proteins constitute a distinct subfamily within the E2 protein family. They have sequence similarity to other ubiquitin-conjugating enzymes but lack the conserved cysteine residue that is critical for the catalytic activity of E2s. The protein encoded by this gene is located in the nucleus and can cause transcriptional activation of the human FOS proto-oncogene. It is thought to be involved in the control of differentiation by altering cell cycle behavior. Alternatively spliced transcript variants encoding multiple isoforms have been described for this gene, and multiple pseudogenes of this gene have been identified. Co-transcription of this gene and the neighboring upstream gene generates a rare transcript (Kua-UEV), which encodes a fusion protein comprised of sequence sharing identity with each individual gene product.

Immunogen: Full length fusion protein

Applications: ELISA, WB, IHC

Recommended Dilutions: IHC: 25-100;WB: 500-2000;ELISA: 5000-10000

Host Species: Rabbit

Clonality: Rabbit Polyclonal

Isotype: Immunogen-specific rabbit IgG

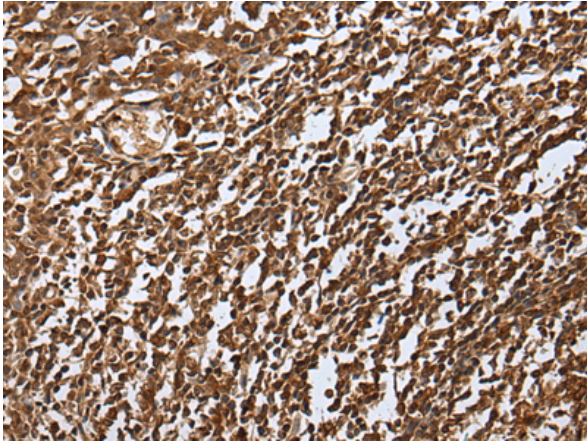
Purification: Antigen affinity purification

Species Reactivity: Human, Mouse

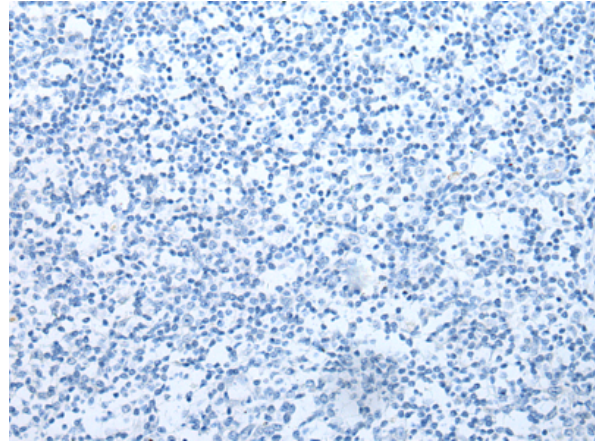
Constituents: PBS (without Mg²⁺ and Ca²⁺), pH 7.4, 150 mM NaCl, 0.05% Sodium Azide and 40% glycerol

Research Areas: Signal Transduction, Epigenetics and Nuclear Signaling, Cancer, Cell Biology

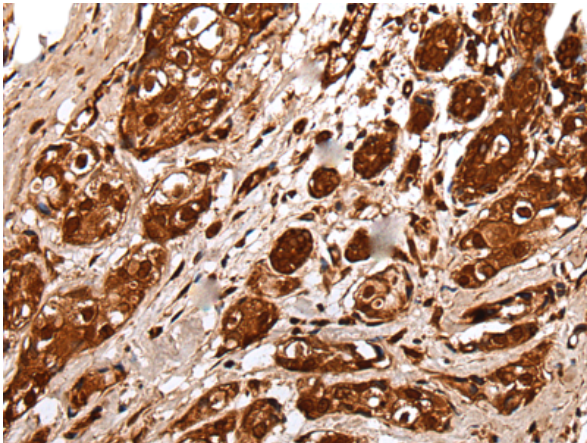
Storage & Shipping: Store at -20°C. Avoid repeated freezing and thawing



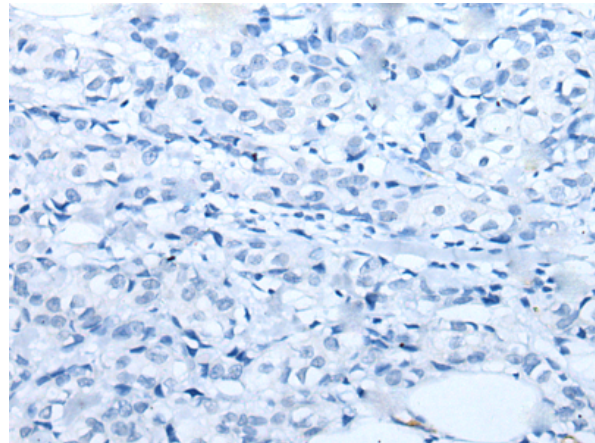
Immunohistochemistry analysis of paraffin embedded Human tonsil tissue using 218310(UBE2V1 Antibody) at a dilution of 1/30(Nucleus).



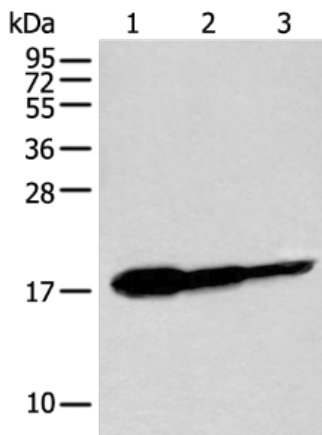
In comparison with the IHC on the left, the same paraffin-embedded Human tonsil tissue is first treated with the fusion protein and then with 218310(Anti-UBE2V1 Antibody) at dilution 1/30.



The image on the left is immunohistochemistry of paraffin-embedded Human breast cancer tissue using 218310(Anti-UBE2V1 Antibody) at a dilution of 1/30.



In comparison with the IHC on the left, the same paraffin-embedded Human breast cancer tissue is first treated with fusion protein and then with D224135(Anti-UBE2V1 Antibody) at dilution 1/30.



Gel: 12%SDS-PAGE, Lysate: 40 µg;
 Lane 1-3: Human fetal brain tissue, HT-29 cell and Jurkat cell lysates;
 Primary antibody: 218310(UBE2V1 Antibody) at dilution 1/250;
 Secondary antibody: Goat anti rabbit IgG at 1/8000 dilution;
 Exposure time: 5 seconds



Product Description

Pioneering GTPase and Oncogene Product Development since 2010
