

## UBE2Z RABBIT PAB

**Cat.#:** S218208

**Product Name:** Anti-UBE2Z Rabbit Polyclonal Antibody

**Synonyms:** USE1; HOYS7

**UNIPROT ID:** Q9H832 (Gene Accession - BC015890 )

**Background:** This gene encodes an enzyme which ubiquitinates proteins which participate in signaling pathways and apoptosis.

**Immunogen:** Fusion protein of human UBE2Z

**Applications:** ELISA, WB, IHC

**Recommended Dilutions:** IHC: 25-100;WB: 500-2000;ELISA: 5000-10000

**Host Species:** Rabbit

**Clonality:** Rabbit Polyclonal

**Isotype:** Immunogen-specific rabbit IgG

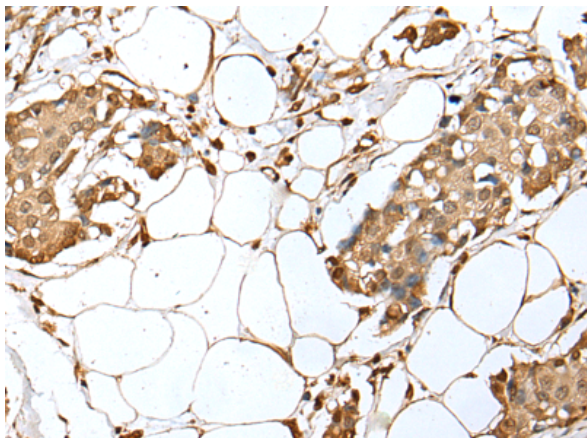
**Purification:** Antigen affinity purification

**Species Reactivity:** Human, Mouse, Rat

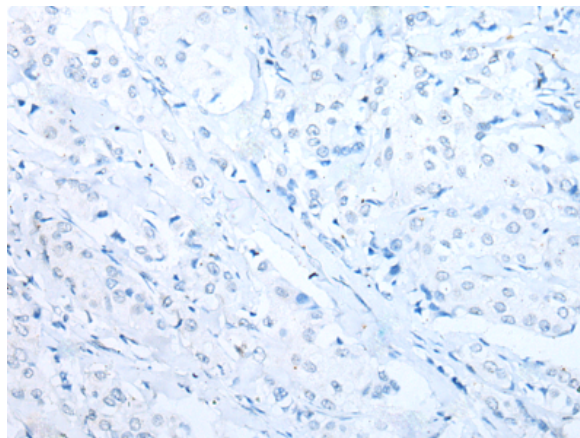
**Constituents:** PBS (without Mg<sup>2+</sup> and Ca<sup>2+</sup>), pH 7.4, 150 mM NaCl, 0.05% Sodium Azide and 40% glycerol

**Research Areas:** Epigenetics and Nuclear Signaling, Cell Biology

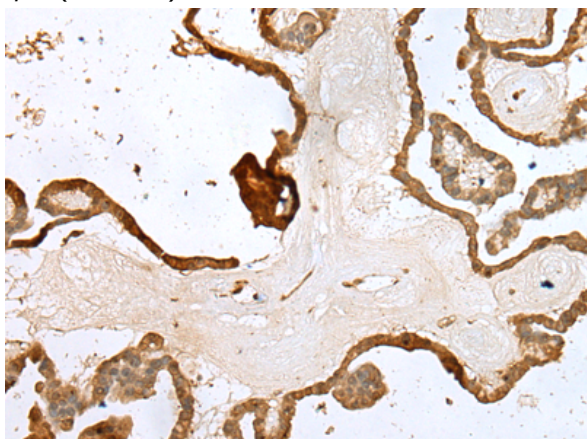
**Storage & Shipping:** Store at -20°C. Avoid repeated freezing and thawing



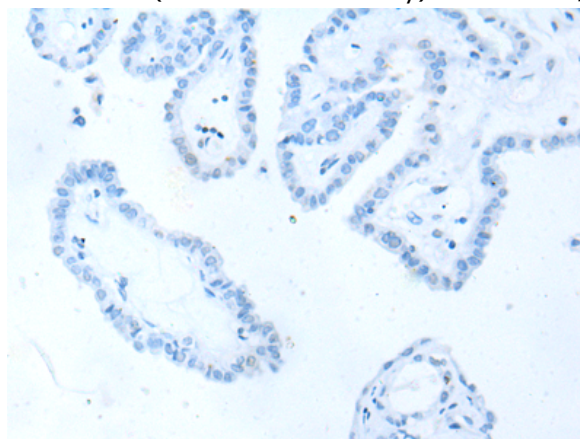
Immunohistochemistry analysis of paraffin embedded Human breast cancer tissue using 218208(UBE2Z Antibody) at a dilution of 1/35(Nucleus).



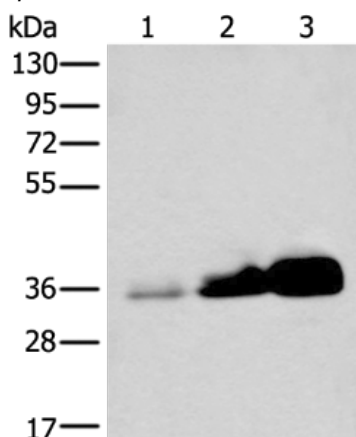
In comparison with the IHC on the left, the same paraffin-embedded Human breast cancer tissue is first treated with the fusion protein and then with 218208(Anti-UBE2Z Antibody) at dilution 1/35.



The image on the left is immunohistochemistry of paraffin-embedded Human thyroid cancer tissue using 218208(Anti-UBE2Z Antibody) at a dilution of 1/35.



In comparison with the IHC on the left, the same paraffin-embedded Human thyroid cancer tissue is first treated with fusion protein and then with D223952(Anti-UBE2Z Antibody) at dilution 1/35.



Gel: 8%SDS-PAGE, Lysate: 40 µg;  
 Lane 1-3: Human testis tissue, NIH/3T3 and 231 cell lysates;  
 Primary antibody: 218208(UBE2Z Antibody) at dilution 1/350;  
 Secondary antibody: Goat anti rabbit IgG at 1/8000 dilution;  
 Exposure time: 1 second



# Product Description

Pioneering GTPase and Oncogene Product Development since 2010

---