

## UBIQUITIN 60S RIBOSOMAL PROTEIN L40 RABBIT PAB

**Cat.#:** N226027

**Product Name:** Anti-Ubiquitin 60S Ribosomal Protein L40 Rabbit pAb

**Synonyms:** L40; CEP52; RPL40; HUBCEP52

**UNIPROT ID:** P62987

**Background:** Ubiquitin: Exists either covalently attached to another protein, or free (unanchored).

**Immunogen:** A synthetic peptide of human UBA52

**Applications:** FC,ICC/IF,IP,WB

**Recommended Dilutions:** WB: 1/500-1/1000 IF: 1/50-1/200 IP: 1/20 FC: 1/50-1/100

**Host Species:** Rabbit

**Clonality:** Rabbit Polyclonal

**Clone ID:** -

**MW:** Calculated MW: 15 kDa; Observed MW: 10 kDa

**Isotype:** IgG

**Purification:** Affinity Purified

**Species Reactivity:** Human,Rat

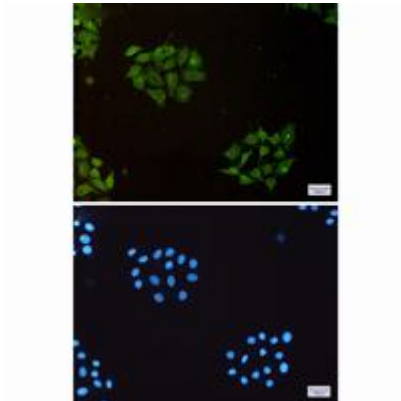
**Conjugation:** Unconjugated

**Modification:** Unmodified

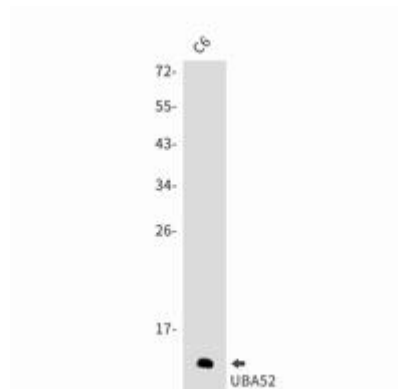
**Constituents:** PBS (without Mg<sup>2+</sup> and Ca<sup>2+</sup>), pH 7.3 containing 50% glycerol, 0.5% BSA and 0.02% sodium azide

**Research Areas:** Epigenetics and Nuclear Signaling

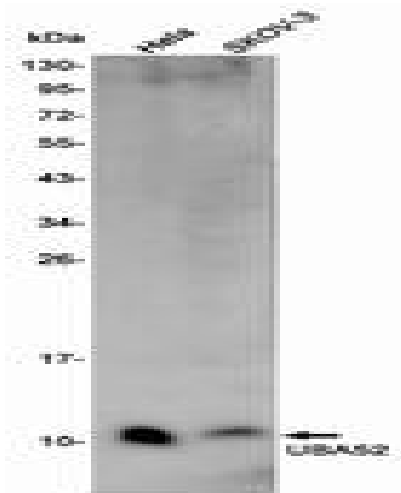
**Storage & Shipping:** Store at -20°C. Avoid repeated freezing and thawing



Immunocytochemistry analysis of UBA52 (green) in Hela using UBA52 antibody, and DAPI (blue)



Western blot analysis of UBA52 in C6 lysates using UBA52 antibody.



Western blot analysis of UBA52 in Hela, SKOV-3 lysates using UBA52 antibody.