

UBIQUITIN CONJUGATING ENZYME E2 A/B RABBIT PAB

Cat.#: N225025

Product Name: Anti-Ubiquitin Conjugating Enzyme E2 A/B Rabbit pAb

Synonyms: UBE2A; RAD6A; Ubiquitin-conjugating enzyme E2 A; RAD6 homolog A; HR6A; hHR6A; Ubiquitin carrier protein A; Ubiquitin-protein ligase A; UBE2B; RAD6B; Ubiquitin-conjugating enzyme E2 B; RAD6 homolog B; HR6B; hHR6B; Ubiquitin carrier protein B; Ubiquitin-conjugating enzyme E2-17 kDa; Ubiquitin-protein ligase B

UNIPROT ID: P49459/P63146

Background: Accepts ubiquitin from the E1 complex and catalyzes its covalent attachment to other proteins. In association with the E3 enzyme BRE1 (RNF20 and/or RNF40), it plays a role in transcription regulation by catalyzing the monoubiquitination of histone H2B at 'Lys-120' to form H2BK120ub1. H2BK120ub1 gives a specific tag for epigenetic transcriptional activation, elongation by RNA polymerase II, telomeric silencing, and is also a prerequisite for H3K4me and H3K79me formation.

Immunogen: Synthesized peptide derived from the C-terminal region of human UBE2A/B.

Applications: WB,IHC-P,ELISA

Recommended Dilutions: WB: 1/500-1/1000 IHC: 1/50-1/100 ELISA: 1/10000

Host Species: Rabbit

Clonality: Rabbit Polyclonal

Clone ID: -

MW: Calculated MW: 17 kDa; Observed MW: 17 kDa

Isotype: IgG

Purification: Affinity Purified

Species Reactivity: Human,Mouse,Rat

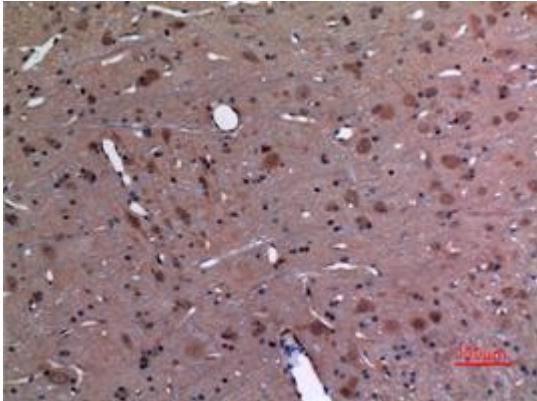
Conjugation: Unconjugated

Modification: Unmodified

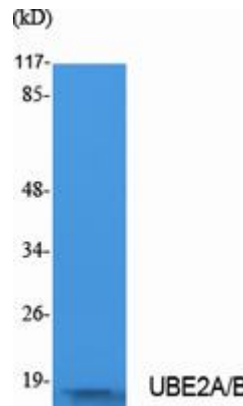
Constituents: PBS (without Mg²⁺ and Ca²⁺), pH 7.3 containing 50% glycerol, 0.5% BSA and 0.02% sodium azide

Research Areas: Epigenetics and Nuclear Signaling

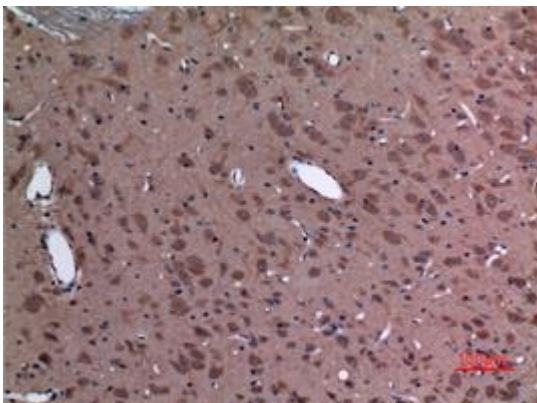
Storage & Shipping: Store at -20°C. Avoid repeated freezing and thawing



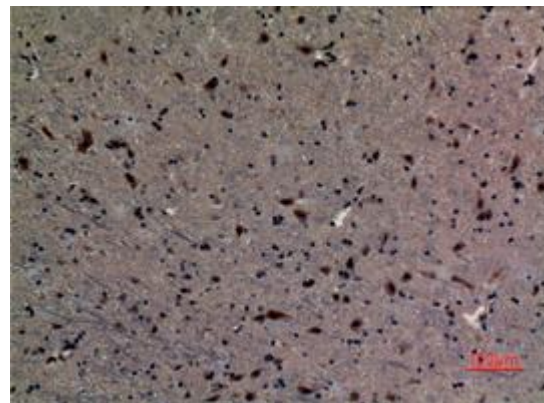
Immunohistochemistry analysis of paraffin-embedded rat brain using Ubiquitin Conjugating Enzyme E2 A/B antibody. High-pressure and temperature Sodium Citrate pH 6.0 was used for antigen retrieval.



Western blot analysis of Ubiquitin Conjugating Enzyme E2 A/B in Jurkat lysates using UBE2A/B antibody.



Immunohistochemistry analysis of paraffin-embedded rat brain using Ubiquitin Conjugating Enzyme E2 A/B antibody. High-pressure and temperature Sodium Citrate pH 6.0 was used for antigen retrieval.



Immunohistochemistry analysis of paraffin-embedded mouse brain using Ubiquitin Conjugating Enzyme E2 A/B antibody. High-pressure and temperature Sodium Citrate pH 6.0 was used for antigen retrieval.