

UBIQUITIN CONJUGATING ENZYME E2 C RABBIT MAB

Cat.#: N263594

Product Name: Anti-Ubiquitin Conjugating Enzyme E2 C Rabbit Monoclonal Antibody

Synonyms: UBCH 10; Ubch10; Ube2c

UNIPROT ID: O00762

Background: Accepts ubiquitin from the E1 complex and catalyzes its covalent attachment to other proteins. In vitro catalyzes 'Lys-11'- and 'Lys-48'-linked polyubiquitination. Acts as an essential factor of the anaphase promoting complex/cyclosome (APC/C), a cell cycle-regulated ubiquitin ligase that controls progression through mitosis.

Immunogen: Recombinant protein of human UBE2C

Applications: WB,IHC-F,IHC-P,ICC/IF,IP

Recommended Dilutions: WB: 1/500-1/1000 IHC: 1/50-1/100 IF: 1/50-1/200 IP: 1/20

Host Species: Rabbit

Clonality: Rabbit Monoclonal

Clone ID: R08-4F5

MW: Calculated MW: 20 kDa; Observed MW: 20 kDa

Isotype: IgG

Purification: Affinity Purified

Species Reactivity: Human,Mouse,Rat

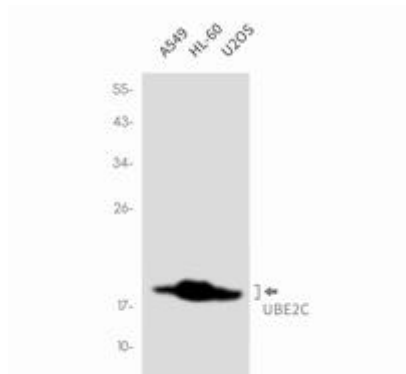
Conjugation: Unconjugated

Modification: Unmodified

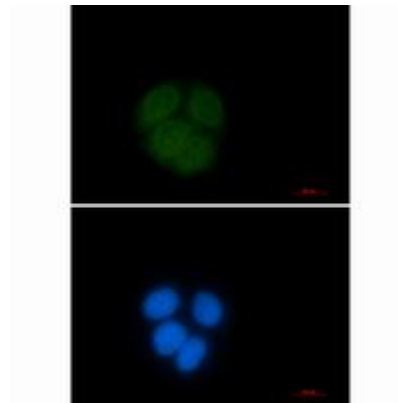
Constituents: PBS (without Mg²⁺ and Ca²⁺), pH 7.3 containing 50% glycerol, 0.5% BSA and 0.02% sodium azide

Research Areas: Epigenetics and Nuclear Signaling

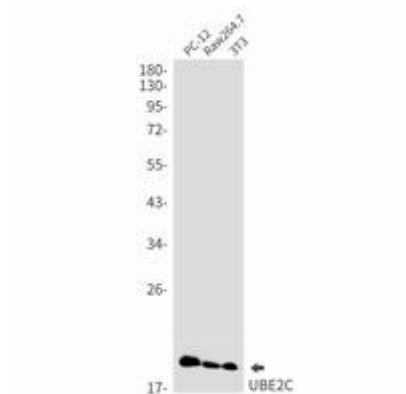
Storage & Shipping: Store at -20°C. Avoid repeated freezing and thawing



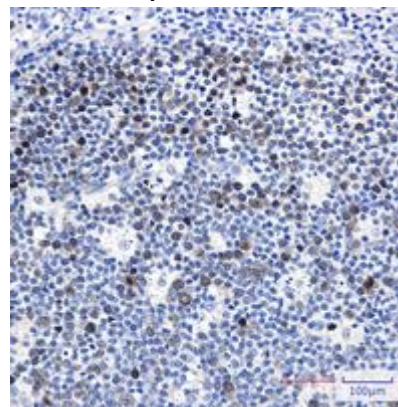
Western blot analysis of UBE2C in A549, HL-60, U2OS lysates using UBE2C antibody



Immunocytochemistry analysis of Ubiquitin Conjugating Enzyme E2 C (green) in HeLa using Ubiquitin Conjugating Enzyme E2 C antibody, and DAPI (blue).



Western blot analysis of UBE2C in PC-12, Raw264.7, 3T3 lysates using UBE2C antibody.



Immunohistochemistry analysis of paraffin-embedded Human tonsil using UBE2C antibody. High-pressure and temperature Sodium Citrate pH 6.0 was used for antigen retrieval.