

## UBIQUITIN CONJUGATING ENZYME E2 L3 RABBIT MAB

**Cat.#:** N263596

**Product Name:** Anti-Ubiquitin Conjugating Enzyme E2 L3 Rabbit Monoclonal Antibody

**Synonyms:** E2-F1; L-UBC; UBCH7; UbcM4

**UNIPROT ID:** P68036

**Background:** Ubiquitin-conjugating enzyme E2 that specifically acts with HECT-type and RBR family E3 ubiquitin-protein ligases.

**Immunogen:** A synthetic peptide of human Ube2L3/UBCH7

**Applications:** WB, ICC/IF, IP

**Recommended Dilutions:** WB: 1/500-1/1000 IF: 1/50-1/200 IP: 1/20

**Host Species:** Rabbit

**Clonality:** Rabbit Monoclonal

**Clone ID:** R02-4B2

**MW:** Calculated MW: 18 kDa; Observed MW: 18 kDa

**Isotype:** IgG

**Purification:** Affinity Purified

**Species Reactivity:** Human, Mouse, Rat

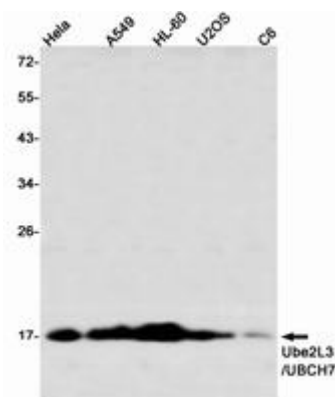
**Conjugation:** Unconjugated

**Modification:** Unmodified

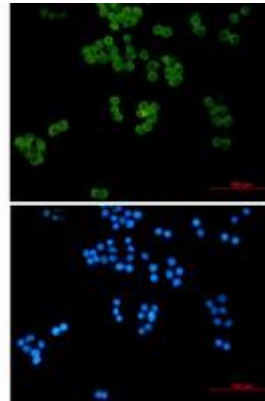
**Constituents:** PBS (without Mg<sup>2+</sup> and Ca<sup>2+</sup>), pH 7.3 containing 50% glycerol, 0.5% BSA and 0.02% sodium azide

**Research Areas:** -

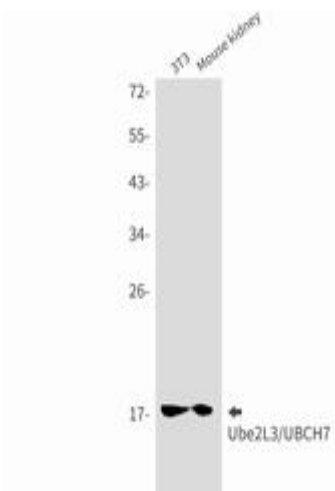
**Storage & Shipping:** Store at -20°C. Avoid repeated freezing and thawing



Western blot analysis of Ube2L3/UBCH7 in HeLa, A549, HL-60, U2OS, C6 lysates using Ube2L3/UBCH7 antibody



Immunocytochemistry analysis of Ubiquitin Conjugating Enzyme E2 L3 (green) in HeLa using Ubiquitin Conjugating Enzyme E2 L3 antibody, and DAPI (blue).



Western blot analysis of Ube2L3/UBCH7 in 3T3, mouse kidney lysates using Ube2L3/UBCH7 antibody.