

## UBIQUITIN CONJUGATING ENZYME E2 N RABBIT MAB

**Cat.#:** N263597

**Product Name:** Anti-Ubiquitin Conjugating Enzyme E2 N Rabbit Monoclonal Antibody

**Synonyms:** BLU; HEL-S-71; Ubc13; UbCH ben; Ubch13; UBCHBEN; Ube2n

**UNIPROT ID:** P61088

**Background:** The UBE2V1-UBE2N and UBE2V2-UBE2N heterodimers catalyze the synthesis of non-canonical 'Lys-63'-linked polyubiquitin chains. This type of polyubiquitination does not lead to protein degradation by the proteasome. Mediates transcriptional activation of target genes. Plays a role in the control of progress through the cell cycle and differentiation.

**Immunogen:** A synthetic peptide of human Ube2N/Ubc13

**Applications:** WB,ICC/IF

**Recommended Dilutions:** WB: 1/500-1/1000 IF: 1/50-1/200

**Host Species:** Rabbit

**Clonality:** Rabbit Monoclonal

**Clone ID:** R05-5B0

**MW:** Calculated MW: 17 kDa; Observed MW: 17 kDa

**Isotype:** IgG

**Purification:** Affinity Purified

**Species Reactivity:** Human,Rat

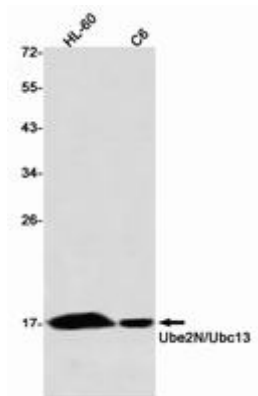
**Conjugation:** Unconjugated

**Modification:** Unmodified

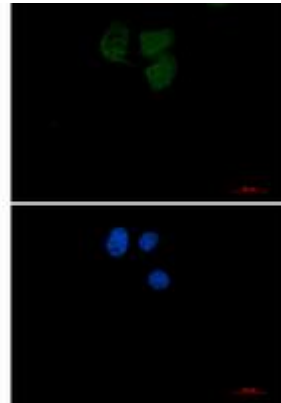
**Constituents:** PBS (without Mg<sup>2+</sup> and Ca<sup>2+</sup>), pH 7.3 containing 50% glycerol, 0.5% BSA and 0.02% sodium azide

**Research Areas:** Epigenetics and Nuclear Signaling

**Storage & Shipping:** Store at -20°C. Avoid repeated freezing and thawing



Western blot analysis of Ube2N/Ubc13 in HL-60, C6 lysates using Ube2N/Ubc13 antibody.



Immunocytochemistry analysis of Ubiquitin Conjugating Enzyme E2 N (green) in HeLa using Ubiquitin Conjugating Enzyme E2 N antibody, and DAPI (blue).