

## UBIQUITIN CONJUGATION FACTOR E4 B RABBIT MAB

**Cat.#:** N263599

**Product Name:** Anti-Ubiquitin Conjugation Factor E4 B Rabbit Monoclonal Antibody

**Synonyms:** E4; UFD2; HDNB1; UBOX3; UFD2A

**UNIPROT ID:** O95155

**Background:** Ubiquitin-protein ligase that probably functions as an E3 ligase in conjunction with specific E1 and E2 ligases (By similarity).

**Immunogen:** A synthetic peptide of human UBE4B

**Applications:** WB,ICC/IF

**Recommended Dilutions:** WB: 1/500-1/1000 IF: 1/50-1/200

**Host Species:** Rabbit

**Clonality:** Rabbit Monoclonal

**Clone ID:** R04-6C6

**MW:** Calculated MW: 146 kDa; Observed MW: 146 kDa

**Isotype:** IgG

**Purification:** Affinity Purified

**Species Reactivity:** Human,Rat

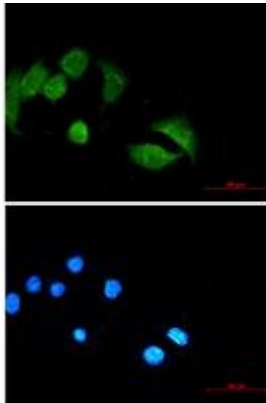
**Conjugation:** Unconjugated

**Modification:** Unmodified

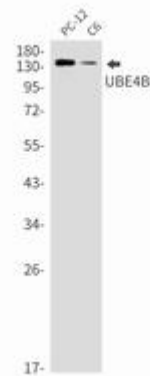
**Constituents:** PBS (without Mg<sup>2+</sup> and Ca<sup>2+</sup>), pH 7.3 containing 50% glycerol, 0.5% BSA and 0.02% sodium azide

**Research Areas:** -

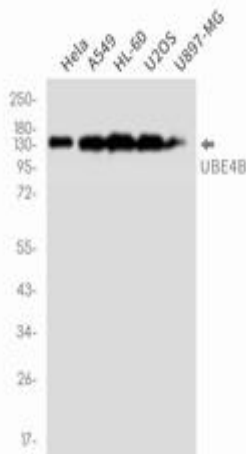
**Storage & Shipping:** Store at -20°C. Avoid repeated freezing and thawing



Immunocytochemistry analysis of UBE4B (green) in MCF-7 using UBE4B antibody, and DAPI (blue)



Western blot analysis of UBE4B in PC-12, C6 lysates using Ubiquitin Conjugation Factor E4 B antibody.



Western blot analysis of UBE4B in HeLa, A549, HL-60, U2OS, U897MG lysates using UBE4B antibody.