

UBIQUITIN PROTEIN LIGASE E3A RABBIT MAB

Cat.#: N263598

Product Name: Anti-Ubiquitin Protein Ligase E3A Rabbit Monoclonal Antibody

Synonyms: Ubiquitin-protein ligase E3A; UBE3A; E6AP; EPVE6AP; HPVE6A

UNIPROT ID: Q05086

Background: E3 ubiquitin-protein ligase which accepts ubiquitin from an E2 ubiquitin-conjugating enzyme in the form of a thioester and transfers it to its substrates. Several substrates have been identified including the RAD23A and RAD23B, MCM7 (which is involved in DNA replication), annexin A1, the PML tumor suppressor, and the cell cycle regulator CDKN1B.

Immunogen: Recombinant protein of human UBE3A

Applications: WB, ICC/IF, IP

Recommended Dilutions: WB: 1/500-1/1000 IF: 1/50-1/200 IP: 1/20

Host Species: Rabbit

Clonality: Rabbit Monoclonal

Clone ID: R02-1A0

MW: Calculated MW: 101 kDa; Observed MW: 101 kDa

Isotype: IgG

Purification: Affinity Purified

Species Reactivity: Human, Mouse, Rat

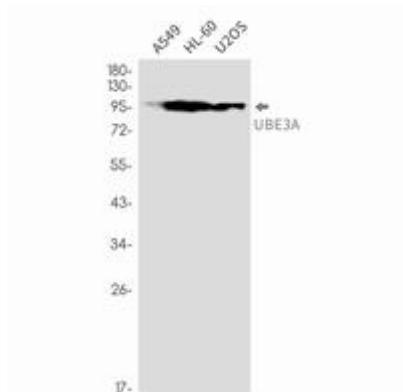
Conjugation: Unconjugated

Modification: Unmodified

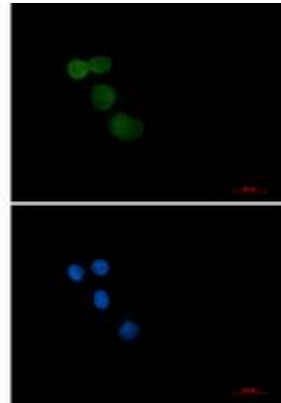
Constituents: PBS (without Mg²⁺ and Ca²⁺), pH 7.3 containing 50% glycerol, 0.5% BSA and 0.02% sodium azide

Research Areas: Epigenetics and Nuclear Signaling

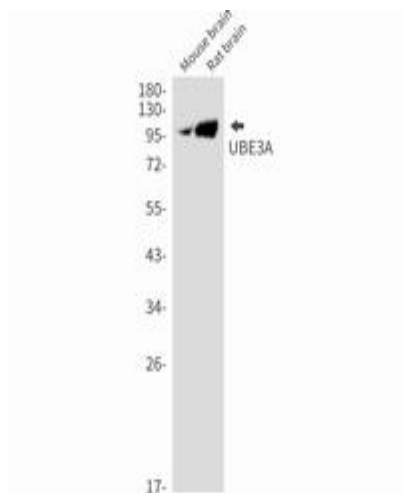
Storage & Shipping: Store at -20°C. Avoid repeated freezing and thawing



Western blot analysis of UBE3A in A549, HL-60, U2OS lysates using UBE3A antibody



Immunocytochemistry analysis of Ubiquitin Protein Ligase E3A (green) in HeLa using Ubiquitin Protein Ligase E3A antibody, and DAPI (blue).



Western blot analysis of UBE3A in mouse brain, rat brain lysates using UBE3A antibody.