

## UBIQUITIN RABBIT MAB

**Cat.#:** N263047

**Product Name:** Anti-Ubiquitin Rabbit Monoclonal Antibody

**Synonyms:** FLJ25987; MGC8385; ubiquitin B; Ubiquitin; UBCEP1; UBCEP2; RPS27A

**UNIPROT ID:** P0CG47

**Background:** Plays an important role in the ubiquitin-proteasome pathway. Ubiquitin can be covalently linked to many cellular proteins by the ubiquitination process, which targets proteins for degradation by the 26S proteasome. Three components are involved in the target protein-ubiquitin conjugation process. Ubiquitin is first activated by forming a thiolester complex with the activation component E1; the activated ubiquitin is subsequently transferred to the ubiquitin-carrier protein E2, then from E2 to ubiquitin ligase E3 for final delivery to the epsilon-NH<sub>2</sub> of the target protein lysine residue.

**Immunogen:** A synthetic peptide of human Ubiquitin

**Applications:** WB, ICC/IF

**Recommended Dilutions:** WB: 1/500-1/1000 IF: 1/50-1/200

**Host Species:** Rabbit

**Clonality:** Rabbit Monoclonal

**Clone ID:** R01-7F1

**MW:** Calculated MW: 26 kDa; Observed MW: 8 kDa

**Isotype:** IgG

**Purification:** Affinity Purified

**Species Reactivity:** Human, Rat

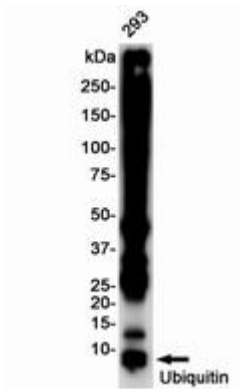
**Conjugation:** Unconjugated

**Modification:** Unmodified

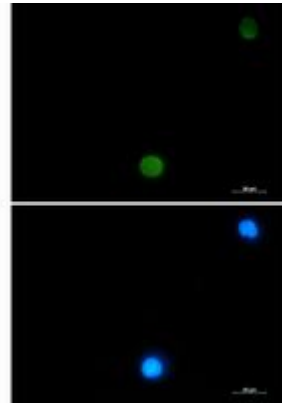
**Constituents:** PBS (without Mg<sup>2+</sup> and Ca<sup>2+</sup>), pH 7.3 containing 50% glycerol, 0.5% BSA and 0.02% sodium azide

**Research Areas:** Neuroscience

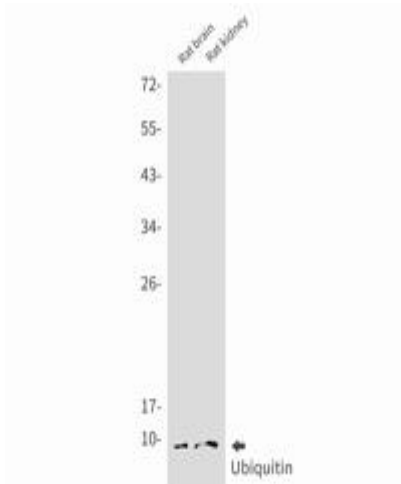
**Storage & Shipping:** Store at -20°C. Avoid repeated freezing and thawing



Western blot analysis of Ubiquitin in 293 lysates using Ubiquitin antibody



Immunocytochemistry analysis of Ubiquitin (green) in CEM using Ubiquitin antibody, and DAPI (blue).



Western blot analysis of Ubiquitin in rat brain, rat kidney lysates using Ubiquitin antibody.