

UBL4A RABBIT PAB

Cat.#: S217972

Product Name: Anti-UBL4A Rabbit Polyclonal Antibody

Synonyms: GDX; G6PD; GET5; MDY2; UBL4; TMA24; DX254E; DXS254E

UNIPROT ID: P11441 (Gene Accession - BC043346)

Background: UBL4A, also known as GD,x has been characterized as a ubiquitously expressed and highly conserved protein from humans to plants. The N-terminal region of UBL4A shares 43% sequence identity with ubiquitin, however the C-terminal region has no homology to ubiquitin and it is therefore unlikely that UBL4A plays any role in targeting cellular proteins for degradation.

Immunogen: Full length fusion protein

Applications: ELISA, WB, IHC

Recommended Dilutions: IHC: 30-150;WB: 1000-5000;ELISA: 2000-10000

Host Species: Rabbit

Clonality: Rabbit Polyclonal

Isotype: Immunogen-specific rabbit IgG

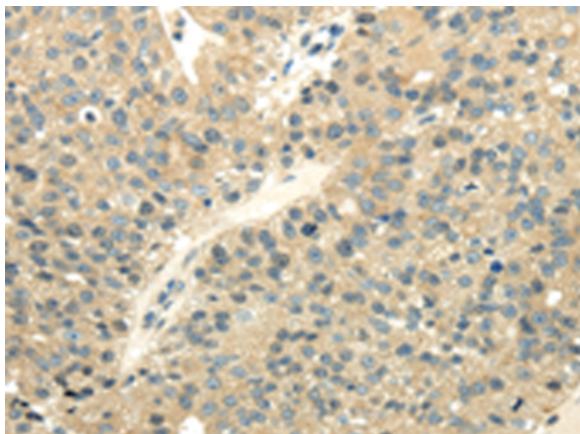
Purification: Antigen affinity purification

Species Reactivity: Human, Mouse, Rat

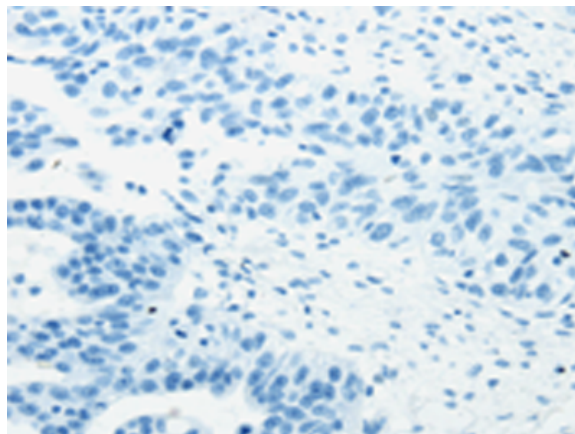
Constituents: PBS (without Mg²⁺ and Ca²⁺), pH 7.4, 150 mM NaCl, 0.05% Sodium Azide and 40% glycerol

Research Areas: Cell Biology

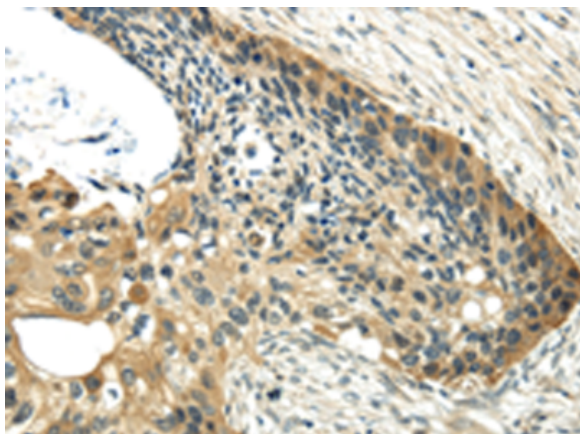
Storage & Shipping: Store at -20°C. Avoid repeated freezing and thawing



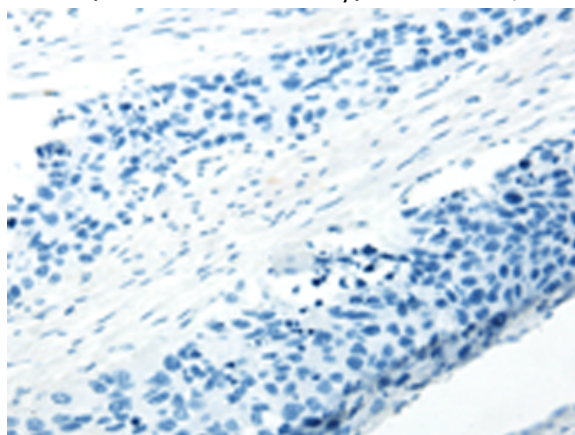
Immunohistochemistry analysis of paraffin embedded Human breast cancer tissue using 217972(UBL4A Antibody) at a dilution of 1/40(Cytoplasm).



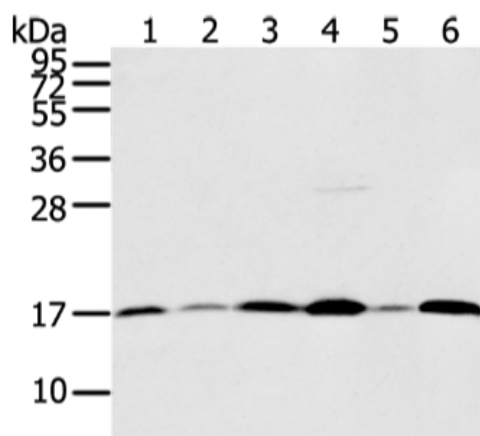
In comparison with the IHC on the left, the same paraffin-embedded Human breast cancer tissue is first treated with the fusion protein and then with 217972(Anti-UBL4A Antibody) at dilution 1/40.



The image on the left is immunohistochemistry of paraffin-embedded Human esophagus cancer tissue using 217972(Anti-UBL4A Antibody) at a dilution of 1/40.



In comparison with the IHC on the left, the same paraffin-embedded Human esophagus cancer tissue is first treated with fusion protein and then with D223469(Anti-UBL4A Antibody) at dilution 1/40.



Gel: 12%SDS-PAGE, Lysate: 40 µg;
Lane 1-6: Hepg2 and Jurkat cell, human fetal brain tissue and hela cell, A431 and PC3 cell;
Primary antibody: 217972(UBL4A Antibody) at dilution 1/800;
Secondary antibody: Goat anti rabbit IgG at 1/8000 dilution;
Exposure time: 1 minute



Product Description

Pioneering GTPase and Oncogene Product Development since 2010
