

UBP1 RABBIT PAB

Cat.#: S220672

Product Name: Anti-UBP1 Rabbit Polyclonal Antibody

Synonyms: LBP1A; LBP1B; LBP-1B; LBP-1a

UNIPROT ID: Q9NZI7 (Gene Accession - NP_001121632)

Background: LBP1 (Upstream-binding protein 1), also designated UBP1, LBP1A or LBP1B, is a 540 amino acid protein that belongs to the grh/CP2 family (grainyhead transcription factor family). LBP1 is a transcriptional activator that regulates the placental expression of CYP11A1 and activates the Hemoglobin globin promoter in erythroid cells. LBP1 is responsible for repressing transcription of HIV-1 by binding to and preventing TFIIID from interacting with its promoter region. Null expression of LBP1 causes uterine growth retardation in mice embryos suggesting a critical role in extraembryonic angiogenesis.

Immunogen: Synthetic peptide of human UBP1

Applications: ELISA, WB, IHC

Recommended Dilutions: IHC: 50-200;WB: 500-2000;ELISA: 2000-5000

Host Species: Rabbit

Clonality: Rabbit Polyclonal

Isotype: Immunogen-specific rabbit IgG

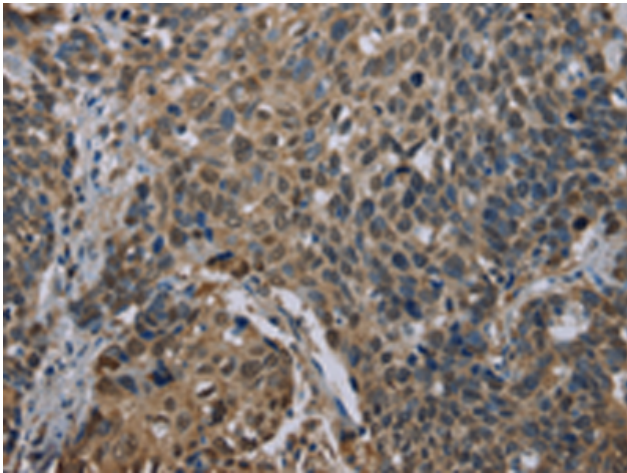
Purification: Antigen affinity purification

Species Reactivity: Human, Mouse

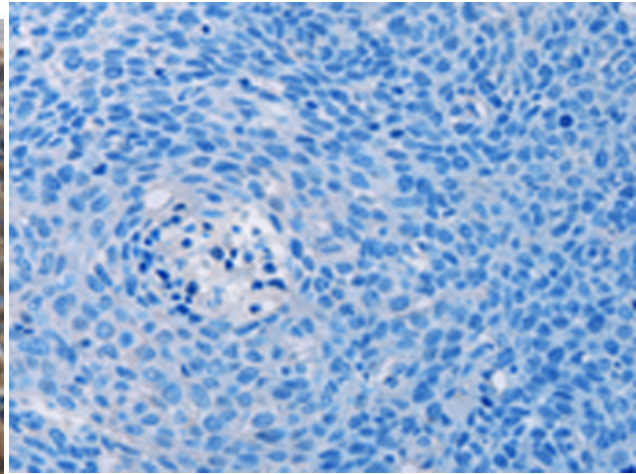
Constituents: PBS (without Mg²⁺ and Ca²⁺), pH 7.4, 150 mM NaCl, 0.05% Sodium Azide and 40% glycerol

Research Areas: Epigenetics and Nuclear Signaling

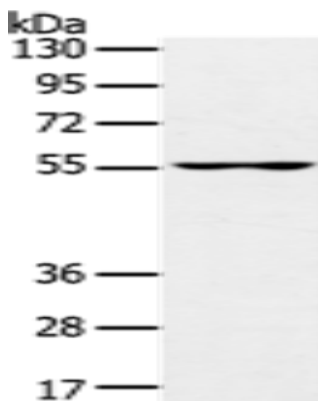
Storage & Shipping: Store at -20°C. Avoid repeated freezing and thawing



Immunohistochemistry analysis of paraffin embedded Human cervical cancer tissue using 220672(UBPI Antibody) at a dilution of 1/40(Nucleus).



In comparison with the IHC on the left, the same paraffin-embedded Human cervical cancer tissue is first treated with the synthetic peptide and then with 220672(Anti-UBPI Antibody) at dilution 1/40.



Gel: 8%SDS-PAGE, Lysate: 40 μ g;
Lane: PC3 cells;
Primary antibody: 220672(UBPI Antibody) at dilution 1/200;
Secondary antibody: Goat anti rabbit IgG at 1/8000 dilution;
Exposure time: 10 seconds