

UBXN10 RABBIT PAB

Cat.#: S221577

Product Name: Anti-UBXN10 Rabbit Polyclonal Antibody

Synonyms: UBXD3

UNIPROT ID: Q96LJ8 (Gene Accession - NP_689589)

Background: Depletion of UBXN10 in zebrafish embryos causes defects in left-right asymmetry, which depends on functional cilia.

Immunogen: Synthetic peptide of human UBXN10

Applications: ELISA, IHC

Recommended Dilutions: IHC: 20-100; ELISA: 5000-10000

Host Species: Rabbit

Clonality: Rabbit Polyclonal

Isotype: Immunogen-specific rabbit IgG

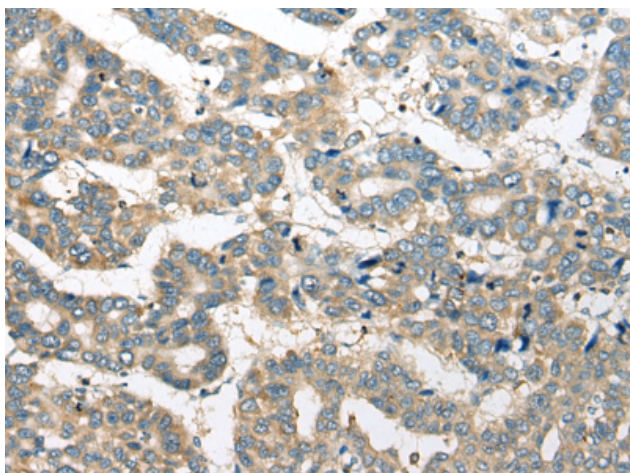
Purification: Antigen affinity purification

Species Reactivity: Human

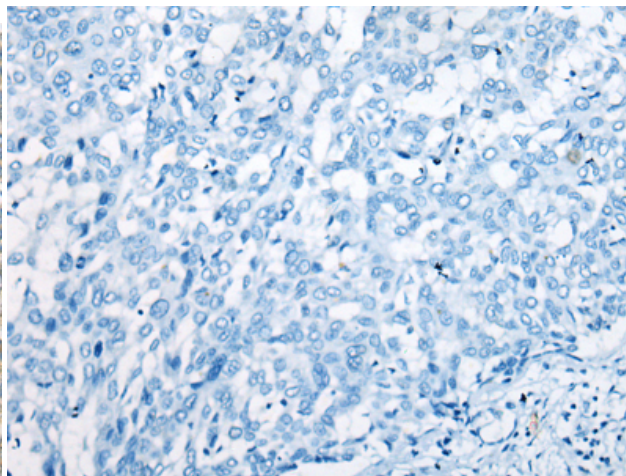
Constituents: PBS (without Mg²⁺ and Ca²⁺), pH 7.4, 150 mM NaCl, 0.05% Sodium Azide and 40% glycerol

Research Areas: Cell Biology

Storage & Shipping: Store at -20°C. Avoid repeated freezing and thawing



Immunohistochemistry analysis of paraffin embedded Human liver cancer tissue using 221577(UBXN10 Antibody) at a dilution of 1/20(Cytoplasm).



In comparison with the IHC on the left, the same paraffin-embedded Human liver cancer tissue is first treated with the synthetic peptide and then with 221577(Anti-UBXN10 Antibody) at dilution 1/20.