

UCHL1 RABBIT PAB

Cat.#: S219271

Product Name: Anti-UCHL1 Rabbit Polyclonal Antibody

Synonyms: NDGOA; PARK5; PGP95; SPG79; PGP9.5; Uch-L1; HEL-117; PGP 9.5; HEL-S-53

UNIPROT ID: P09936 (Gene Accession - BC000332)

Background: The protein encoded by this gene belongs to the peptidase C12 family. This enzyme is a thiol protease that hydrolyzes a peptide bond at the C-terminal glycine of ubiquitin. This gene is specifically expressed in the neurons and in cells of the diffuse neuroendocrine system. Mutations in this gene may be associated with Parkinson disease.

Immunogen: Fusion protein of human UCHL1

Applications: ELISA, WB, IHC

Recommended Dilutions: IHC: 50-200;WB: 1000-5000;ELISA: 5000-10000

Host Species: Rabbit

Clonality: Rabbit Polyclonal

Isotype: Immunogen-specific rabbit IgG

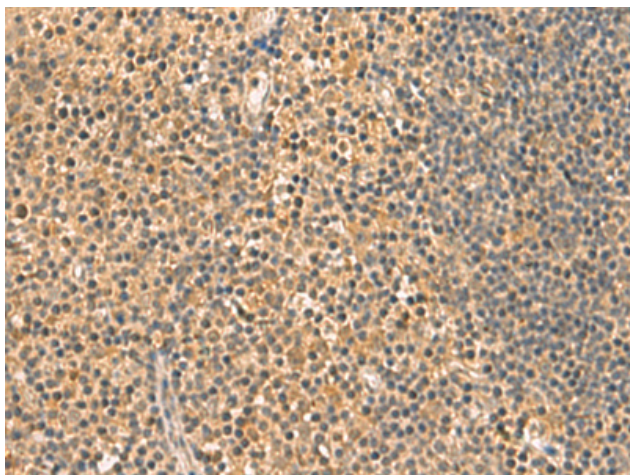
Purification: Antigen affinity purification

Species Reactivity: Human, Mouse, Rat

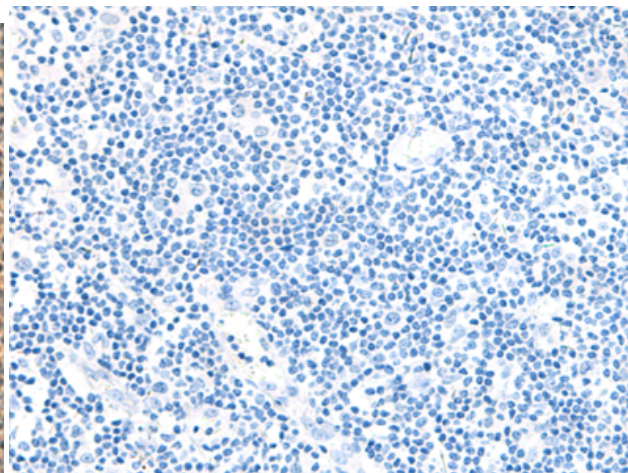
Constituents: PBS (without Mg²⁺ and Ca²⁺), pH 7.4, 150 mM NaCl, 0.05% Sodium Azide and 40% glycerol

Research Areas: Epigenetics and Nuclear Signaling, Cell Biology, Neuroscience

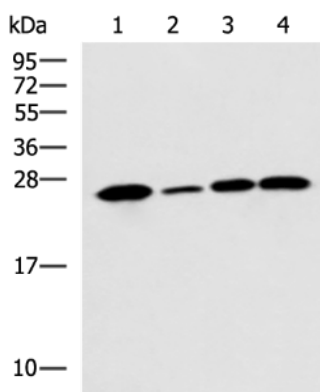
Storage & Shipping: Store at -20°C. Avoid repeated freezing and thawing



Immunohistochemistry analysis of paraffin embedded Human tonsil tissue using 219271(UCHL1 Antibody) at a dilution of 1/60(Cytoplasm).



In comparison with the IHC on the left, the same paraffin-embedded Human tonsil tissue is first treated with the fusion protein and then with 219271(Anti-UCHL1 Antibody) at dilution 1/60.



Gel: 12%SDS-PAGE, Lysate: 40 µg;
 Lane 1-4: Human cerebrum tissue, A172 cell,
 Mouse brain tissue, Rat brain tissue lysates;
 Primary antibody: 219271(UCHL1 Antibody) at
 dilution 1/900;
 Secondary antibody: HRP-conjugated Goat
 anti rabbit IgG at 1/5000 dilution;
 Exposure time: 5 seconds