

UCHL5 RABBIT MAB

Cat.#: N263049

Product Name: Anti-UCHL5 Rabbit Monoclonal Antibody

Synonyms: UCH37; CGI-70; INO80R; UCH-L5

UNIPROT ID: Q9Y5K5

Background: Protease that specifically cleaves 'Lys-48'-linked polyubiquitin chains.

Immunogen: A synthetic peptide of human UCH37

Applications: WB, ICC/IF, IP

Recommended Dilutions: WB: 1/500-1/1000 IF: 1/50-1/200 IP: 1/20

Host Species: Rabbit

Clonality: Rabbit Monoclonal

Clone ID: R03-9C1

MW: Calculated MW: 38 kDa; Observed MW: 38 kDa

Isotype: IgG

Purification: Affinity Purified

Species Reactivity: Human, Mouse, Rat

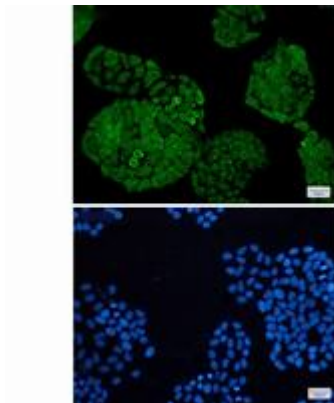
Conjugation: Unconjugated

Modification: Unmodified

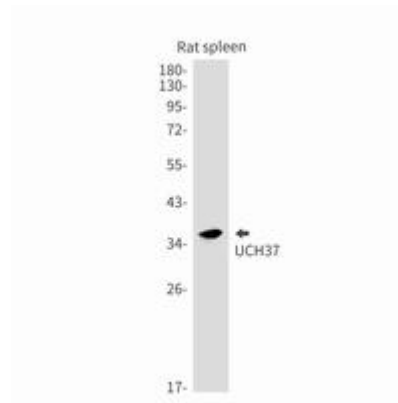
Constituents: PBS (without Mg²⁺ and Ca²⁺), pH 7.3 containing 50% glycerol, 0.5% BSA and 0.02% sodium azide

Research Areas: Cell Biology

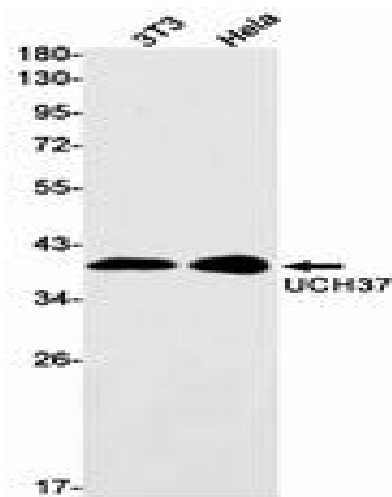
Storage & Shipping: Store at -20°C. Avoid repeated freezing and thawing



Immunocytochemistry analysis of UCH37 (green) in Hela using UCH37 rat spleen lysates using UCHL5 antibody, and DAPI (blue)



Western blot analysis of UCH37 in rat spleen lysates using UCHL5 antibody.



Western blot analysis of UCH37 in 3T3, Hela lysates using UCH37 antibody.