

UCP3 RABBIT PAB

Cat.#: S221080

Product Name: Anti-UCP3 Rabbit Polyclonal Antibody

Synonyms: SLC25A9

UNIPROT ID: P55916 (Gene Accession - NP_003347)

Background: Mitochondrial uncoupling proteins (UCP) are members of the larger family of mitochondrial anion carrier proteins (MACP). UCPs separate oxidative phosphorylation from ATP synthesis with energy dissipated as heat, also referred to as the mitochondrial proton leak. UCPs facilitate the transfer of anions from the inner to the outer mitochondrial membrane and the return transfer of protons from the outer to the inner mitochondrial membrane.

Immunogen: Synthetic peptide of human UCP3

Applications: ELISA, WB, IHC

Recommended Dilutions: IHC: Oct-50;WB: 200-1000;ELISA: 1000-2000

Host Species: Rabbit

Clonality: Rabbit Polyclonal

Isotype: Immunogen-specific rabbit IgG

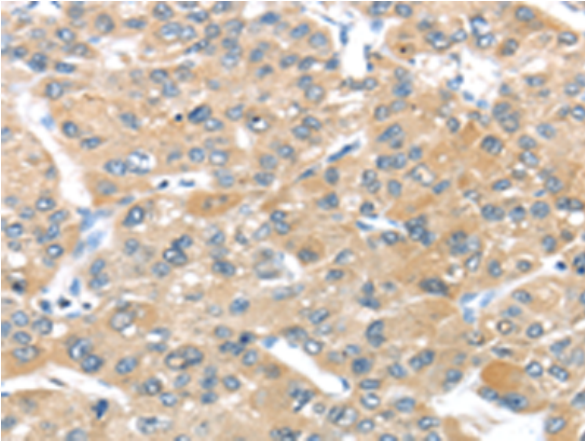
Purification: Antigen affinity purification

Species Reactivity: Human, Mouse, Rat

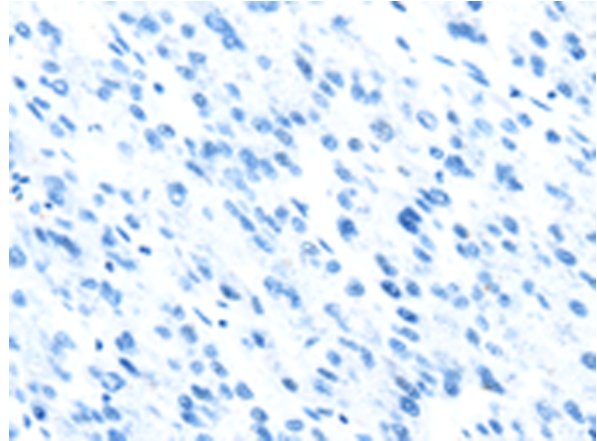
Constituents: PBS (without Mg²⁺ and Ca²⁺), pH 7.4, 150 mM NaCl, 0.05% Sodium Azide and 40% glycerol

Research Areas: Metabolism, Cancer, Cardiovascular, Neuroscience

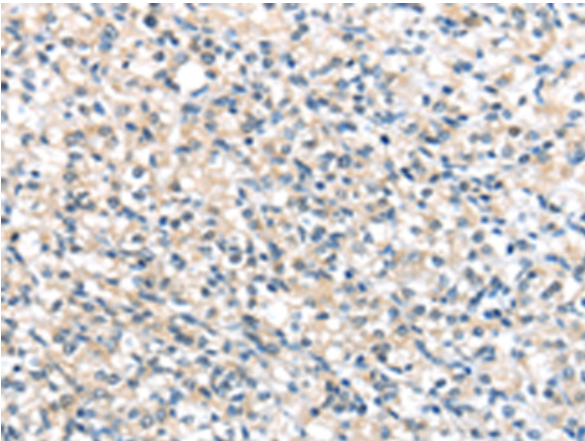
Storage & Shipping: Store at -20°C. Avoid repeated freezing and thawing



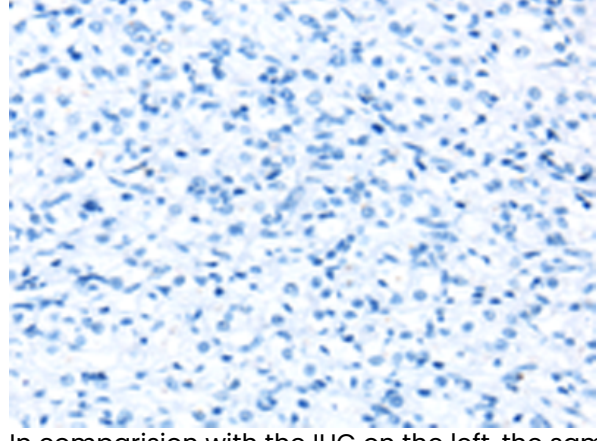
Immunohistochemistry analysis of paraffin embedded Human liver cancer tissue using 221080(UCP3 Antibody) at a dilution of 1/20(Cytoplasm).



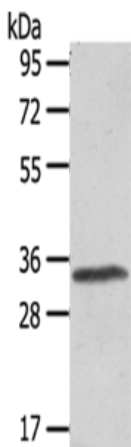
In comparison with the IHC on the left, the same paraffin-embedded Human liver cancer tissue is first treated with the synthetic peptide and then with 221080(Anti-UCP3 Antibody) at dilution 1/20.



The image on the left is immunohistochemistry of paraffin-embedded Human prostate cancer tissue using 221080(Anti-UCP3 Antibody) at a dilution of 1/20.



In comparison with the IHC on the left, the same paraffin-embedded Human prostate cancer tissue is first treated with synthetic peptide and then with D262449(Anti-UCP3 Antibody) at dilution 1/20.



Gel: 8%SDS-PAGE, Lysate: 40 µg;
Lane: Mouse lung tissue;
Primary antibody: 221080(UCP3 Antibody) at dilution 1/200;
Secondary antibody: Goat anti rabbit IgG at 1/8000 dilution;
Exposure time: 1 minute



Product Description

Pioneering GTPase and Oncogene Product Development since 2010
