

## UFM1 RABBIT MAB

**Cat.#:** N261554

**Product Name:** Anti-UFM1 Rabbit Monoclonal Antibody

**Synonyms:** Ubiquitin-fold modifier 1; C13orf20

**UNIPROT ID:** P61960

**Background:** Ubiquitin-like modifier which can be covalently attached via an isopeptide bond to lysine residues of substrate proteins as a monomer or a lysine-linked polymer.

**Immunogen:** A synthetic peptide of human UFM1

**Applications:** WB,IHC-P,IP

**Recommended Dilutions:** WB: 1/500-1/1000 IHC: 1/50-1/100 IP: 1/20

**Host Species:** Rabbit

**Clonality:** Rabbit Monoclonal

**Clone ID:** R02-5G1

**MW:** Calculated MW: 9 kDa; Observed MW: 9 kDa

**Isotype:** IgG

**Purification:** Affinity Purified

**Species Reactivity:** Human,Mouse

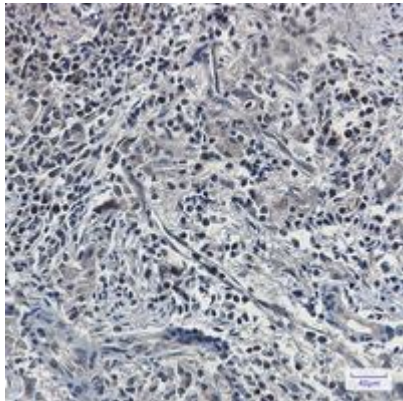
**Conjugation:** Unconjugated

**Modification:** Unmodified

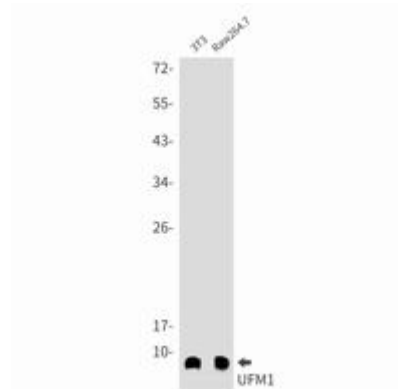
**Constituents:** PBS (without Mg<sup>2+</sup> and Ca<sup>2+</sup>), pH 7.3 containing 50% glycerol, 0.5% BSA and 0.02% sodium azide

**Research Areas:** Cell Biology

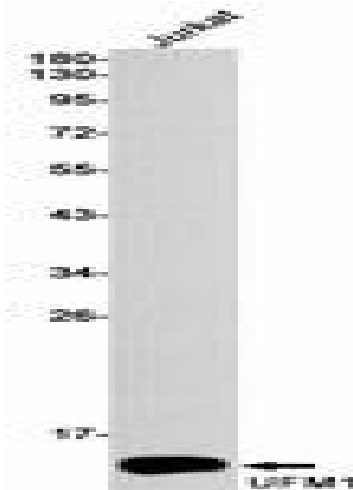
**Storage & Shipping:** Store at -20°C. Avoid repeated freezing and thawing



Immunohistochemistry analysis of paraffin-embedded Human lung cancer using UFM1 antibody. High-pressure and temperature Sodium Citrate pH 6.0 was used for antigen retrieval.



Western blot analysis of UFM1 in 3T3, Raw264.7 lysates using UFM1 antibody.



Western blot analysis of UFM1 in Jurkat lysates using UFM1 antibody.