

## UNC5CL RABBIT PAB

**Cat.#:** S213294

**Product Name:** Anti-UNC5CL Rabbit Polyclonal Antibody

**Synonyms:** ZUD; MUXA

**UNIPROT ID:** Q8IV45 (Gene Accession - NP\_775832 )

**Background:** Inhibits NF-kappa-B-dependent transcription by impairing NF-kappa-B binding to its targets.

**Immunogen:** Synthetic peptide of human UNC5CL

**Applications:** ELISA, WB, IHC

**Recommended Dilutions:** IHC: 50-200;WB: 1000-5000;ELISA: 2000-10000

**Host Species:** Rabbit

**Clonality:** Rabbit Polyclonal

**Isotype:** Immunogen-specific rabbit IgG

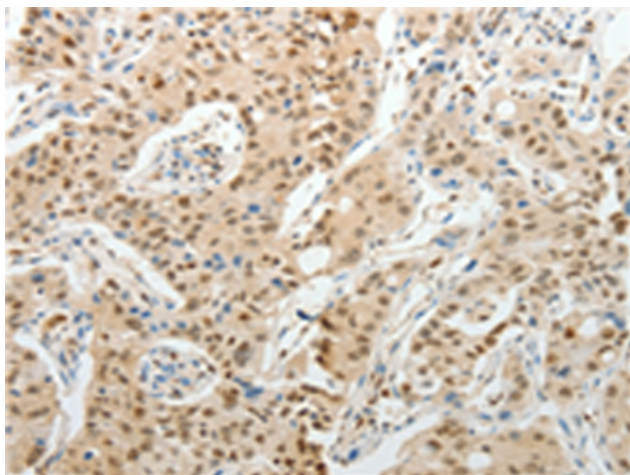
**Purification:** Antigen affinity purification

**Species Reactivity:** Human, Mouse

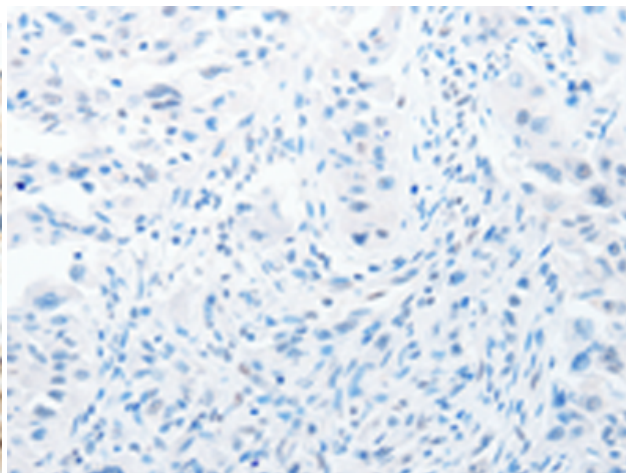
**Constituents:** PBS (without Mg<sup>2+</sup> and Ca<sup>2+</sup>), pH 7.4, 150 mM NaCl, 0.05% Sodium Azide and 40% glycerol

**Research Areas:** Cancer

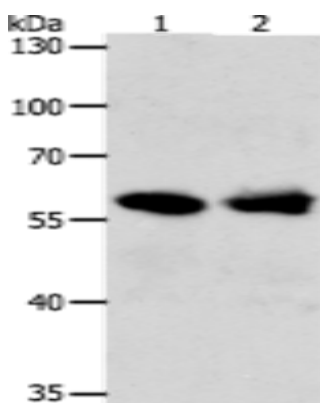
**Storage & Shipping:** Store at -20°C. Avoid repeated freezing and thawing



Immunohistochemistry analysis of paraffin embedded Human lung cancer tissue using 213294(UNC5CL Antibody) at a dilution of 1/50(Cytoplasm, Nucleus).



In comparison with the IHC on the left, the same paraffin-embedded Human lung cancer tissue is first treated with the synthetic peptide and then with 213294(Anti-UNC5CL Antibody) at dilution 1/50.



Gel: 8%SDS-PAGE, Lysate: 40  $\mu$ g;  
Lane 1-2: Mouse kidney tissue, 293T cells;  
Primary antibody: 213294(UNC5CL Antibody)  
at dilution 1/850;  
Secondary antibody: Goat anti rabbit IgG at  
1/8000 dilution;  
Exposure time: 10 seconds