

UPF1 RABBIT PAB

Cat.#: S214092

Product Name: Anti-UPF1 Rabbit Polyclonal Antibody

Synonyms: HUPF1; NORF1; RENT1; smg-2; pNORF1

UNIPROT ID: Q92900 (Gene Accession - NP_002902)

Background: This gene encodes a protein that is part of a post-splicing multiprotein complex involved in both mRNA nuclear export and mRNA surveillance. mRNA surveillance detects exported mRNAs with truncated open reading frames and initiates nonsense-mediated mRNA decay (NMD). When translation ends upstream from the last exon-exon junction, this triggers NMD to degrade mRNAs containing premature stop codons. This protein is located only in the cytoplasm. When translation ends, it interacts with the protein that is a functional homolog of yeast Upf2p to trigger mRNA decapping. Use of multiple polyadenylation sites has been noted for this gene. Alternative splicing results in multiple transcript variants.

Immunogen: Synthetic peptide of human UPF1

Applications: ELISA, WB, IHC

Recommended Dilutions: IHC: 50-200;WB: 200-1000;ELISA: 1000-5000

Host Species: Rabbit

Clonality: Rabbit Polyclonal

Isotype: Immunogen-specific rabbit IgG

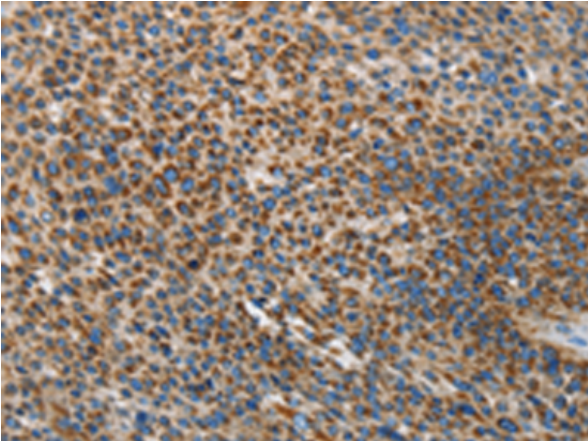
Purification: Antigen affinity purification

Species Reactivity: Human, Mouse

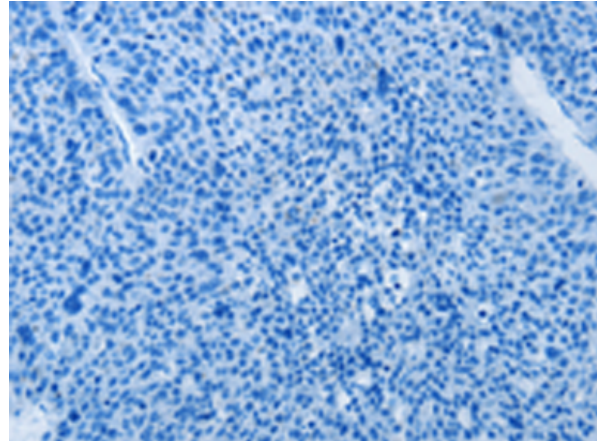
Constituents: PBS (without Mg²⁺ and Ca²⁺), pH 7.4, 150 mM NaCl, 0.05% Sodium Azide and 40% glycerol

Research Areas: Epigenetics and Nuclear Signaling

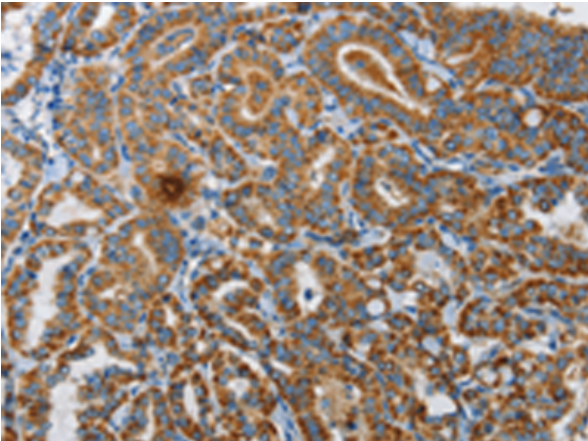
Storage & Shipping: Store at -20°C. Avoid repeated freezing and thawing



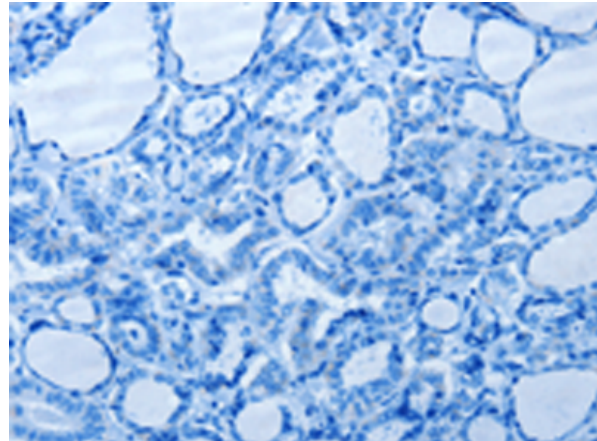
Immunohistochemistry analysis of paraffin embedded Human liver cancer tissue using 214092(UPF1 Antibody) at a dilution of 1/35(Cytoplasm).



In comparison with the IHC on the left, the same paraffin-embedded Human liver cancer tissue is first treated with the synthetic peptide and then with 214092(Anti-UPF1 Antibody) at dilution 1/35.



The image on the left is immunohistochemistry of paraffin-embedded Human thyroid cancer tissue using 214092(Anti-UPF1 Antibody) at a dilution of 1/35.



In comparison with the IHC on the left, the same paraffin-embedded Human thyroid cancer tissue is first treated with synthetic peptide and then with D161327(Anti-UPF1 Antibody) at dilution 1/35.



Gel: 6%SDS-PAGE, Lysate: 60 µg;
Lane: Raji cells;
Primary antibody: 214092(UPF1 Antibody) at dilution 1/300;
Secondary antibody: Goat anti rabbit IgG at 1/8000 dilution;
Exposure time: 10 minutes



Product Description

Pioneering GTPase and Oncogene Product Development since 2010
