

## UQCC2 RABBIT PAB

**Cat.#:** S212500

**Product Name:** Anti-UQCC2 Rabbit Polyclonal Antibody

**Synonyms:** M19; Cbp6; MNF1; C6orf125; C6orf126; bA6B20.2

**UNIPROT ID:** Q9BRT2 (Gene Accession - BC006007 )

**Background:** This gene encodes a nucleoid protein localized to the mitochondria inner membrane. The encoded protein affects regulation of insulin secretion, mitochondrial ATP production, and myogenesis through modulation of mitochondrial respiratory chain activity.

**Immunogen:** Fusion protein of human UQCC2

**Applications:** ELISA, IHC

**Recommended Dilutions:** IHC: 40-200; ELISA: 5000-10000

**Host Species:** Rabbit

**Clonality:** Rabbit Polyclonal

**Isotype:** Immunogen-specific rabbit IgG

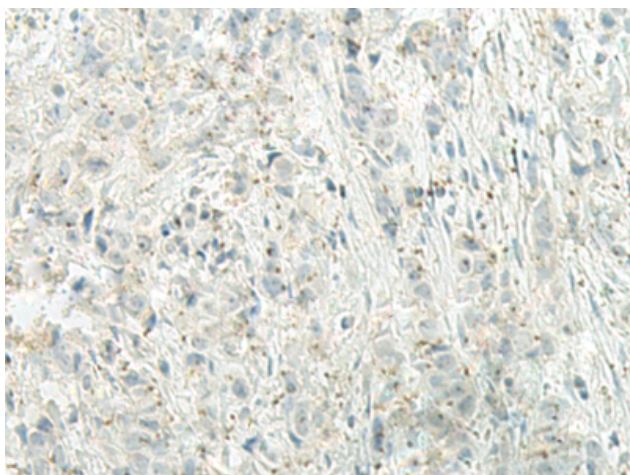
**Purification:** Antigen affinity purification

**Species Reactivity:** Human, Mouse, Rat

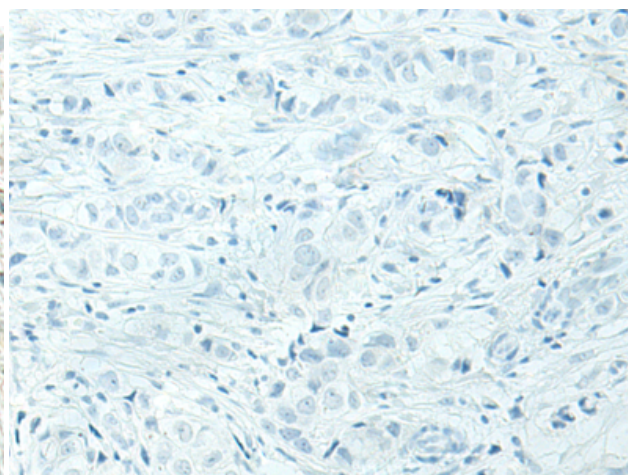
**Constituents:** PBS (without Mg<sup>2+</sup> and Ca<sup>2+</sup>), pH 7.4, 150 mM NaCl, 0.05% Sodium Azide and 40% glycerol

**Research Areas:** Metabolism

**Storage & Shipping:** Store at -20°C. Avoid repeated freezing and thawing



Immunohistochemistry analysis of paraffin embedded Human breast cancer tissue using 212500(UQCC2 Antibody) at a dilution of 1/60(Cytoplasm).



In comparison with the IHC on the left, the same paraffin-embedded Human breast cancer tissue is first treated with the fusion protein and then with 212500(Anti-UQCC2 Antibody) at dilution 1/60.