

UQCR10 RABBIT PAB

Cat.#: S221874

Product Name: Anti-UQCR10 Rabbit Polyclonal Antibody

Synonyms: QCR9; UCRC; HSPC051; HSPC119; HSPC151; UCCR7.2

UNIPROT ID: Q9UDW1 (Gene Accession - NP_037519)

Background: UCRC is a subunit of mitochondrial complex III (ubiquinol-cytochrome c reductase; EC 1.10.2.2), which forms the middle segment of the respiratory chain of the inner mitochondrial membrane (Schagger et al., 1995 [PubMed 8592474]).

Immunogen: Synthetic peptide of human UQCR10

Applications: ELISA, IHC

Recommended Dilutions: IHC: 20-100; ELISA: 5000-10000

Host Species: Rabbit

Clonality: Rabbit Polyclonal

Isotype: Immunogen-specific rabbit IgG

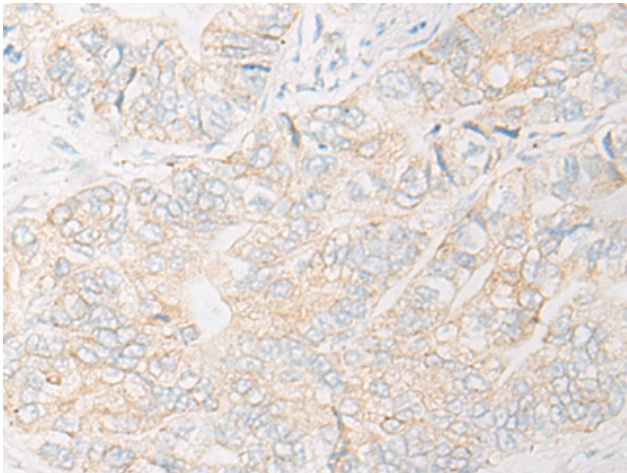
Purification: Antigen affinity purification

Species Reactivity: Human, Mouse

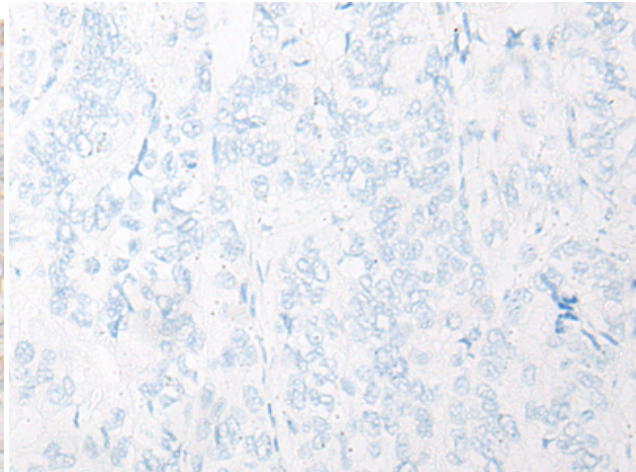
Constituents: PBS (without Mg²⁺ and Ca²⁺), pH 7.4, 150 mM NaCl, 0.05% Sodium Azide and 40% glycerol

Research Areas: Metabolism, Cancer

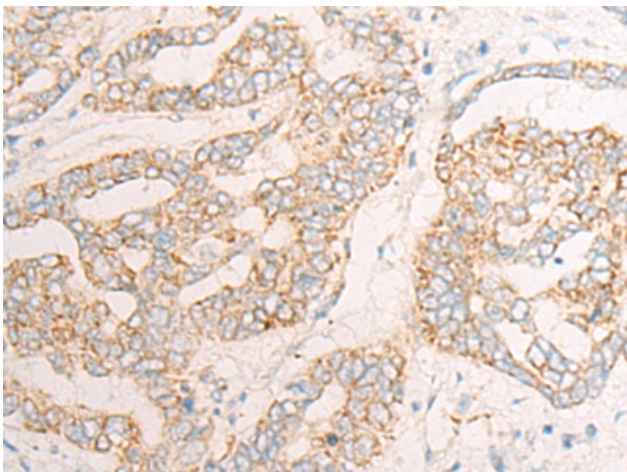
Storage & Shipping: Store at -20°C. Avoid repeated freezing and thawing



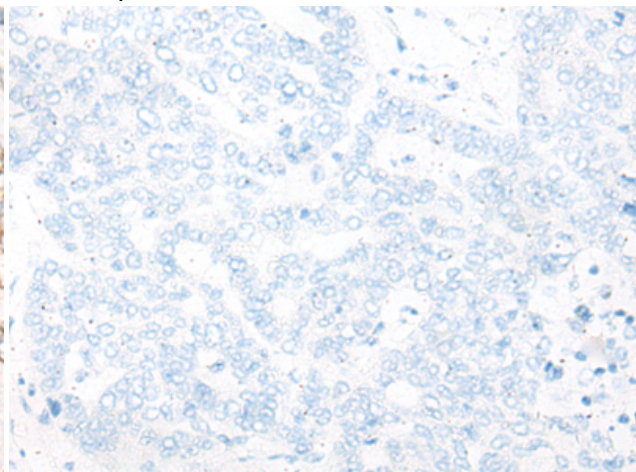
Immunohistochemistry analysis of paraffin embedded Human gastric cancer tissue using 221874(UQCR10 Antibody) at a dilution of 1/30(Mitochondrion inner membrane).



In comparison with the IHC on the left, the same paraffin-embedded Human gastric cancer tissue is first treated with the synthetic peptide and then with 221874(Anti-UQCR10 Antibody) at dilution 1/30.



The image on the left is immunohistochemistry of paraffin-embedded Human liver cancer tissue using 221874(Anti-UQCR10 Antibody) at a dilution of 1/30.



In comparison with the IHC on the left, the same paraffin-embedded Human liver cancer tissue is first treated with synthetic peptide and then with D263661(Anti-UQCR10 Antibody) at dilution 1/30.