

UQCRC1 RABBIT PAB

Cat.#: S217987

Product Name: Anti-UQCRC1 Rabbit Polyclonal Antibody

Synonyms: QCRI; UQCRI; D3S3191

UNIPROT ID: P31930 (Gene Accession - BC009586)

Background: Cytochrome b-c1 complex subunit 1, mitochondrial is a protein that in humans is encoded by the UQCRC1 gene. This is a component of the ubiquinol-cytochrome c reductase complex (complex III or cytochrome b-c1 complex), which is part of the mitochondrial respiratory chain. This protein may mediate formation of the complex between cytochromes c and c1.

Immunogen: Fusion protein of human UQCRC1

Applications: ELISA, WB, IHC

Recommended Dilutions: IHC: 20-100;WB: 500-2000;ELISA: 2000-5000

Host Species: Rabbit

Clonality: Rabbit Polyclonal

Isotype: Immunogen-specific rabbit IgG

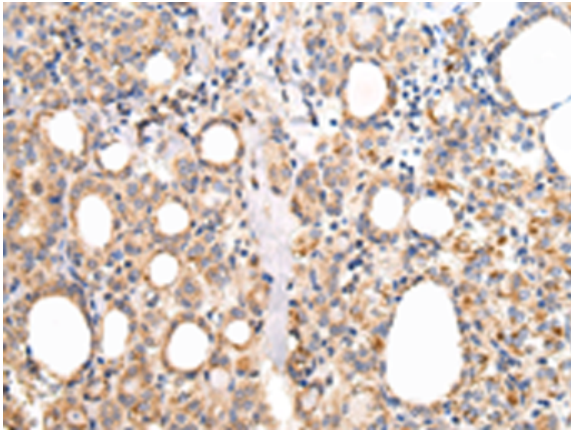
Purification: Antigen affinity purification

Species Reactivity: Human, Mouse, Rat

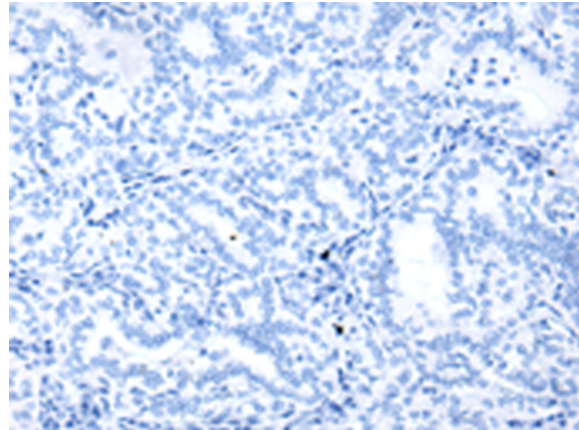
Constituents: PBS (without Mg²⁺ and Ca²⁺), pH 7.4, 150 mM NaCl, 0.05% Sodium Azide and 40% glycerol

Research Areas: Metabolism

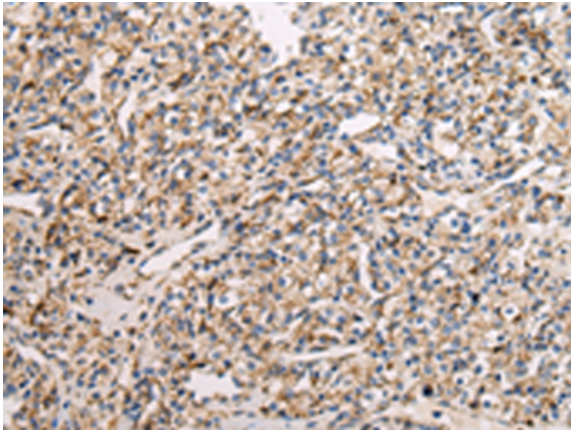
Storage & Shipping: Store at -20°C. Avoid repeated freezing and thawing



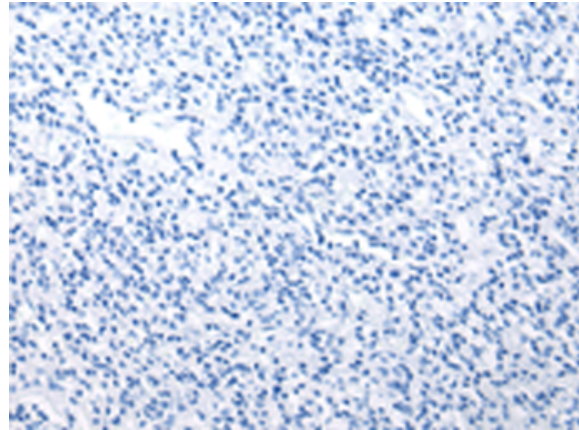
Immunohistochemistry analysis of paraffin embedded Human thyroid cancer tissue using 217987(UQCRC1 Antibody) at a dilution of 1/20(Cytoplasm).



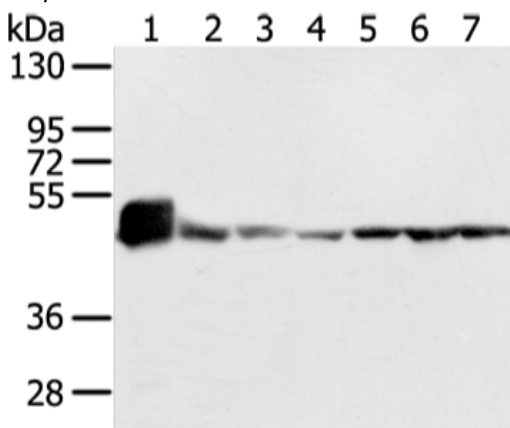
In comparison with the IHC on the left, the same paraffin-embedded Human thyroid cancer tissue is first treated with the fusion protein and then with 217987(Anti-UQCRC1 Antibody) at dilution 1/20.



The image on the left is immunohistochemistry of paraffin-embedded Human prostate cancer tissue using 217987(Anti-UQCRC1 Antibody) at a dilution of 1/20.



In comparison with the IHC on the left, the same paraffin-embedded Human prostate cancer tissue is first treated with fusion protein and then with D223504(Anti-UQCRC1 Antibody) at dilution 1/20.



Gel: 8%SDS-PAGE, Lysate: 40 µg;
 Lane 1-7: Mouse heart tissue and lo2 cell, 231 cell and human fetal brain tissue, A431, hela and 293T cell;
 Primary antibody: 217987(UQCRC1 Antibody) at dilution 1/200;
 Secondary antibody: Goat anti rabbit IgG at 1/8000 dilution;
 Exposure time: 1 second



Product Description

Pioneering GTPase and Oncogene Product Development since 2010
