

## UQCRC2 RABBIT PAB

**Cat.#:** S217988

**Product Name:** Anti-UQCRC2 Rabbit Polyclonal Antibody

**Synonyms:** QCR2; UQCR2; MC3DN5

**UNIPROT ID:** P22695 (Gene Accession - BC000484 )

**Background:** The protein encoded by this gene is located in the mitochondrion, where it is part of the ubiquinol-cytochrome c reductase complex (also known as complex III). This complex constitutes a part of the mitochondrial respiratory chain. Defects in this gene are a cause of mitochondrial complex III deficiency nuclear type 5.

**Immunogen:** Fusion protein of human UQCRC2

**Applications:** ELISA, WB, IHC

**Recommended Dilutions:** IHC: 50-200;WB: 500-2000;ELISA: 5000-10000

**Host Species:** Rabbit

**Clonality:** Rabbit Polyclonal

**Isotype:** Immunogen-specific rabbit IgG

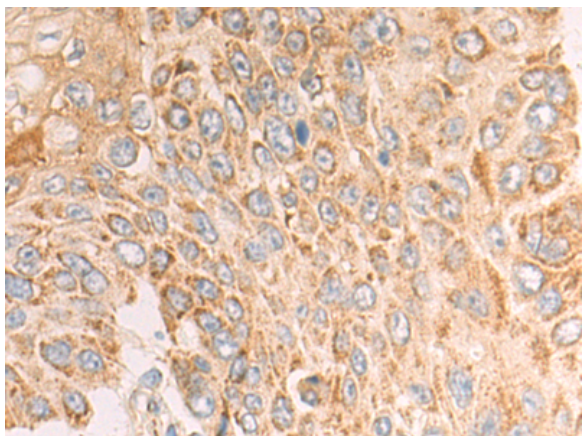
**Purification:** Antigen affinity purification

**Species Reactivity:** Human, Mouse, Rat

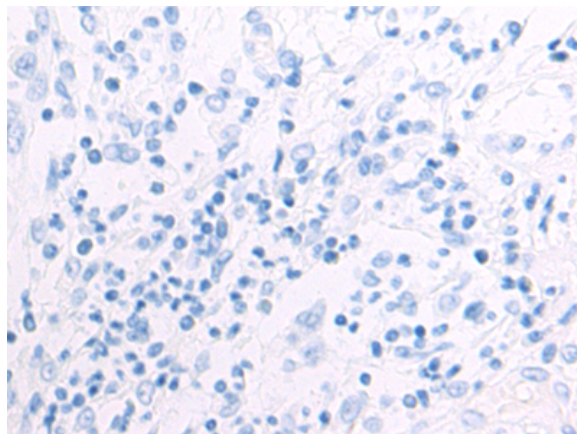
**Constituents:** PBS (without Mg<sup>2+</sup> and Ca<sup>2+</sup>), pH 7.4, 150 mM NaCl, 0.05% Sodium Azide and 40% glycerol

**Research Areas:** Metabolism, Cancer

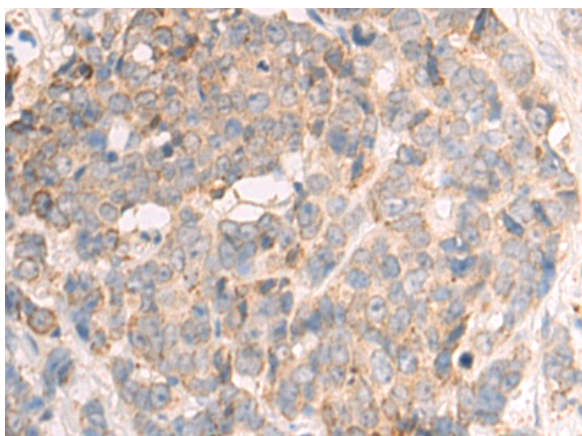
**Storage & Shipping:** Store at -20°C. Avoid repeated freezing and thawing



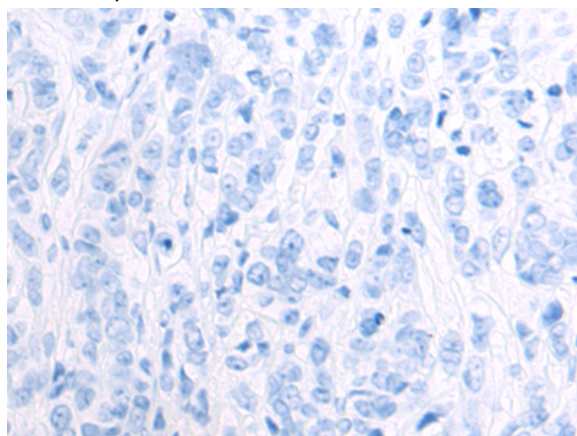
Immunohistochemistry analysis of paraffin-embedded Human esophagus cancer tissue using 217988 (UQCRC2 Antibody) at a dilution of 1/70 (Cytoplasm and Cell membrane).



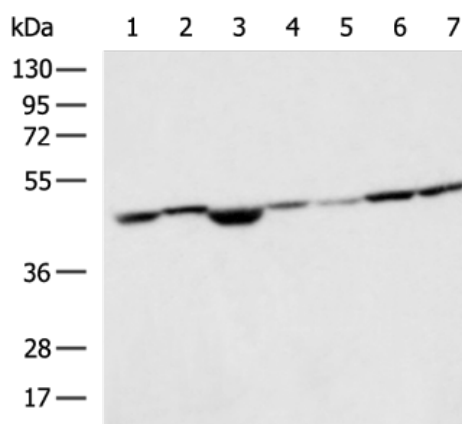
In comparison with the IHC on the left, the same paraffin-embedded Human esophagus cancer tissue is first treated with the fusion protein and then with 217988 (Anti-UQCRC2 Antibody) at dilution 1/70.



The image on the left is immunohistochemistry of paraffin-embedded Human breast cancer tissue using 217988 (Anti-UQCRC2 Antibody) at a dilution of 1/70.



In comparison with the IHC on the left, the same paraffin-embedded Human breast cancer tissue is first treated with fusion protein and then with D223505 (Anti-UQCRC2 Antibody) at dilution 1/70.



Gel: 8%SDS-PAGE, Lysate: 40 µg;  
 Lane 1-7: Mouse kidney tissue, HT-29 cell, Mouse heart tissue, Raji, Jurkat, 293T, HepG2 cell lysates;  
 Primary antibody: 217988 (UQCRC2 Antibody) at dilution 1/800;  
 Secondary antibody: HRP-conjugated Goat anti rabbit IgG at 1/5000 dilution;  
 Exposure time: 3 seconds



# Product Description

Pioneering GTPase and Oncogene Product Development since 2010

---