

## UQCRQ RABBIT PAB

**Cat.#:** S218324

**Product Name:** Anti-UQCRQ Rabbit Polyclonal Antibody

**Synonyms:** QPC; QCR8; QP-C; UQCR7; MC3DN4

**UNIPROT ID:** O14949 (Gene Accession - BC001390 )

**Background:** This gene encodes a ubiquinone-binding protein of low molecular mass. This protein is a small core-associated protein and a subunit of ubiquinol-cytochrome c reductase complex III, which is part of the mitochondrial respiratory chain.

**Immunogen:** Full length fusion protein

**Applications:** ELISA, WB, IHC

**Recommended Dilutions:** IHC: 30-150;WB: 500-2000;ELISA: 5000-10000

**Host Species:** Rabbit

**Clonality:** Rabbit Polyclonal

**Isotype:** Immunogen-specific rabbit IgG

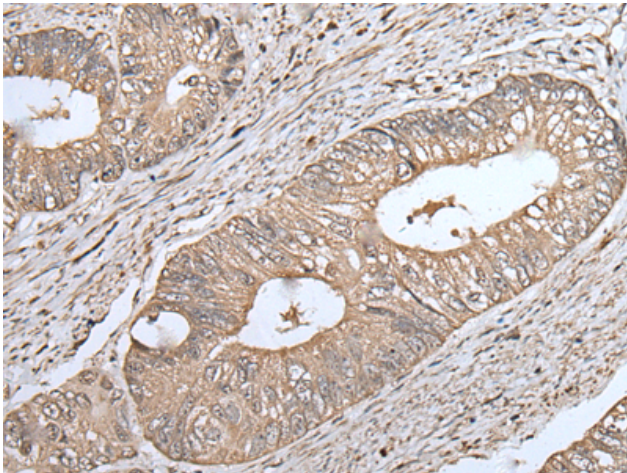
**Purification:** Antigen affinity purification

**Species Reactivity:** Human, Rat

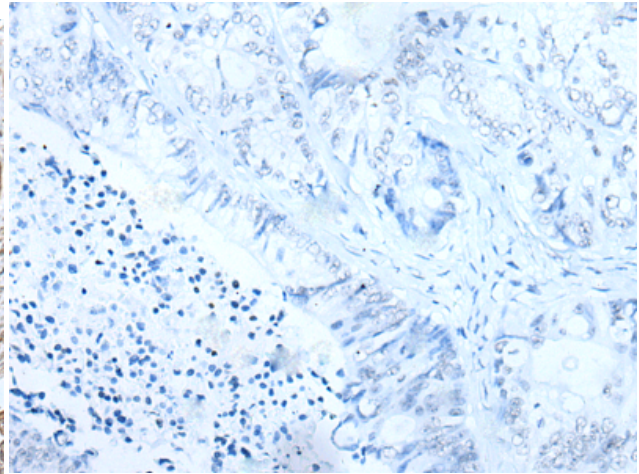
**Constituents:** PBS (without Mg<sup>2+</sup> and Ca<sup>2+</sup>), pH 7.4, 150 mM NaCl, 0.05% Sodium Azide and 40% glycerol

**Research Areas:** Metabolism, Cell Biology

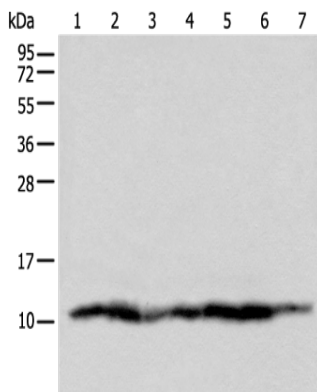
**Storage & Shipping:** Store at -20°C. Avoid repeated freezing and thawing



Immunohistochemistry analysis of paraffin embedded Human colorectal cancer tissue using 218324(UQCRQ Antibody) at a dilution of 1/45(Cytoplasm).



In comparison with the IHC on the left, the same paraffin-embedded Human colorectal cancer tissue is first treated with the fusion protein and then with 218324(Anti-UQCRQ Antibody) at dilution 1/45.



Gel: 12%SDS-PAGE, Lysate: 40  $\mu$ g;  
 Lane 1-7: Human fetal liver tissue, HEPG2 cell, Human placenta tissue, 231, Hela, A549 and 293T cell lysates;  
 Primary antibody: 218324(UQCRQ Antibody) at dilution 1/450;  
 Secondary antibody: Goat anti rabbit IgG at 1/8000 dilution;  
 Exposure time: 1 second