

## URB1 RABBIT PAB

**Cat.#:** S215349

**Product Name:** Anti-URB1 Rabbit Polyclonal Antibody

**Synonyms:** NPA1; C21orf108

**UNIPROT ID:** O60287 (Gene Accession - NP\_055640 )

**Background:** URB1, also named as C21orf108, KIAA0539 and NPA1, is a 2,271 amino acid protein that is homologous to the *S. cerevisiae* protein URB1 which is a nucleolar protein involved in the normal accumulation of 25S and 5.8S rRNAs and may also play a role in the biosynthesis of the 60S ribosomal unit. Also localized to the nucleolus, human URB1 is thought to have the same functions as *S. cerevisiae* URB1. The antibody is specific to URB1.

**Immunogen:** Synthetic peptide of human URB1

**Applications:** ELISA, IHC

**Recommended Dilutions:** IHC: 20-100; ELISA: 1000-2000

**Host Species:** Rabbit

**Clonality:** Rabbit Polyclonal

**Isotype:** Immunogen-specific rabbit IgG

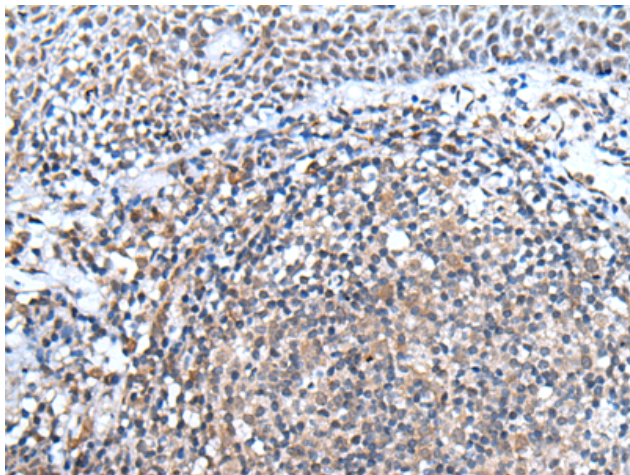
**Purification:** Antigen affinity purification

**Species Reactivity:** Human

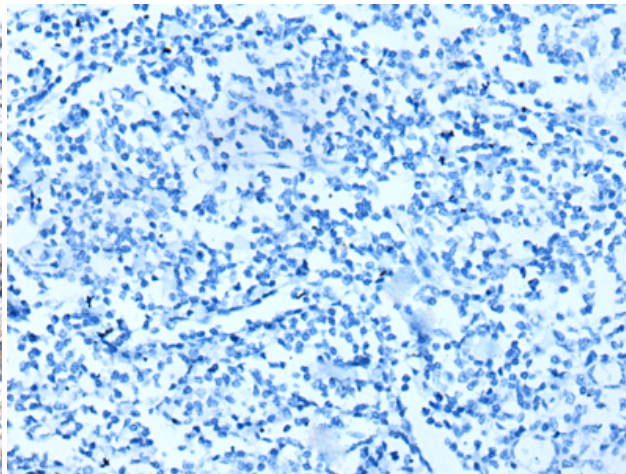
**Constituents:** PBS (without Mg<sup>2+</sup> and Ca<sup>2+</sup>), pH 7.4, 150 mM NaCl, 0.05% Sodium Azide and 40% glycerol

**Research Areas:** Cell Biology

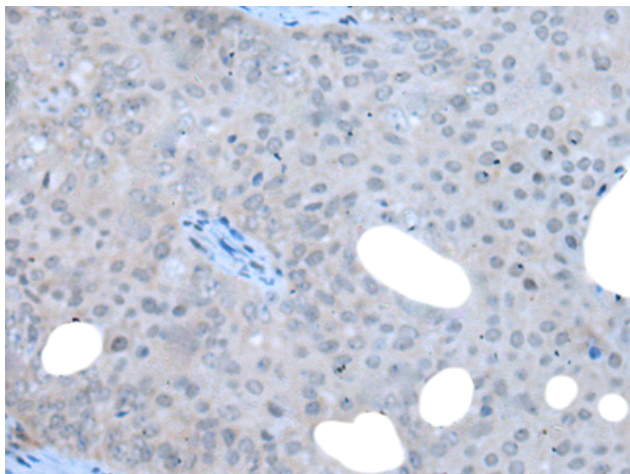
**Storage & Shipping:** Store at -20°C. Avoid repeated freezing and thawing



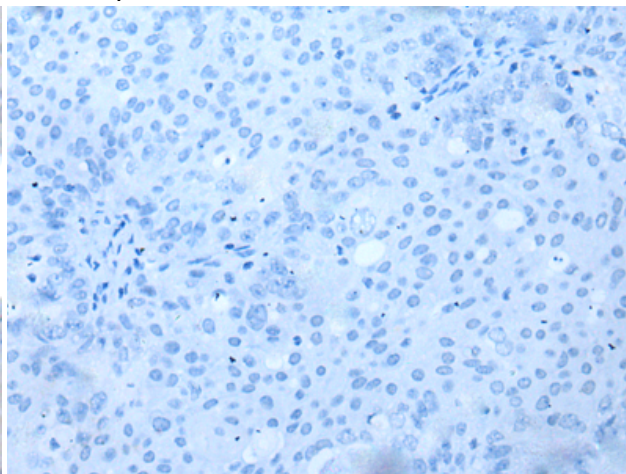
Immunohistochemistry analysis of paraffin embedded Human tonsil tissue using 215349(URB1 Antibody) at a dilution of 1/30(Nucleus).



In comparison with the IHC on the left, the same paraffin-embedded Human tonsil tissue is first treated with the synthetic peptide and then with 215349(Anti-URB1 Antibody) at dilution 1/30.



The image on the left is immunohistochemistry of paraffin-embedded Human ovarian cancer tissue using 215349(Anti-URB1 Antibody) at a dilution of 1/30.



In comparison with the IHC on the left, the same paraffin-embedded Human ovarian cancer tissue is first treated with synthetic peptide and then with D163240(Anti-URB1 Antibody) at dilution 1/30.