

## USE1 RABBIT PAB

**Cat.#:** S218152

**Product Name:** Anti-USE1 Rabbit Polyclonal Antibody

**Synonyms:** D12; P31; SLT1; MDS032

**UNIPROT ID:** Q9NZ43 (Gene Accession - BC006005 )

**Background:** SNARE that may be involved in targeting and fusion of Golgi-derived retrograde transport vesicles with the ER.

**Immunogen:** Full length fusion protein

**Applications:** ELISA, WB, IHC

**Recommended Dilutions:** IHC: 25-100;WB: 200-1000;ELISA: 5000-10000

**Host Species:** Rabbit

**Clonality:** Rabbit Polyclonal

**Isotype:** Immunogen-specific rabbit IgG

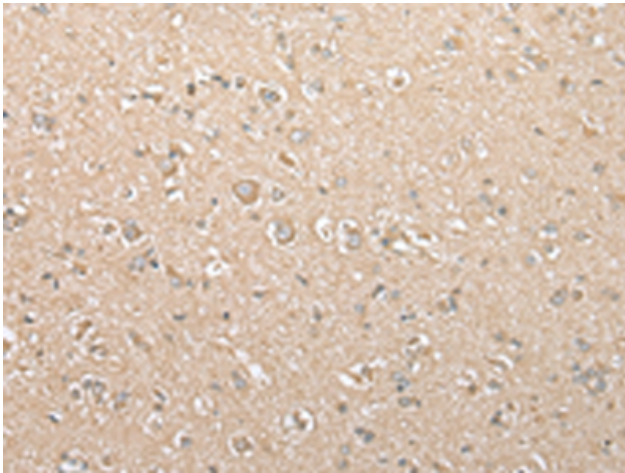
**Purification:** Antigen affinity purification

**Species Reactivity:** Human, Mouse

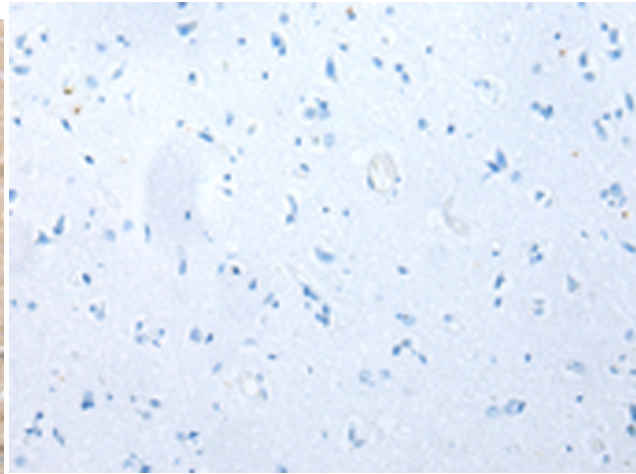
**Constituents:** PBS (without Mg<sup>2+</sup> and Ca<sup>2+</sup>), pH 7.4, 150 mM NaCl, 0.05% Sodium Azide and 40% glycerol

**Research Areas:** Signal Transduction

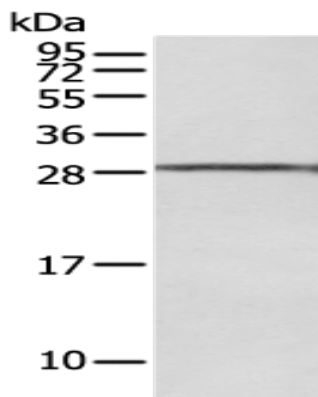
**Storage & Shipping:** Store at -20°C. Avoid repeated freezing and thawing



Immunohistochemistry analysis of paraffin embedded Human brain tissue using 218152(USE1 Antibody) at a dilution of 1/25(Cytoplasm).



In comparison with the IHC on the left, the same paraffin-embedded Human brain tissue is first treated with the fusion protein and then with 218152(Anti-USE1 Antibody) at dilution 1/25.



Gel: 12%SDS-PAGE, Lysate: 40  $\mu$ g;  
Lane: 293T cell;  
Primary antibody: 218152(USE1 Antibody) at dilution 1/250;  
Secondary antibody: Goat anti rabbit IgG at 1/8000 dilution;  
Exposure time: 10 seconds