

UTP18 RABBIT PAB

Cat.#: S221594

Product Name: Anti-UTP18 Rabbit Polyclonal Antibody

Synonyms: WDR50; CGI-48

UNIPROT ID: Q9Y5J1 (Gene Accession - NP_057085)

Background: Involved in nucleolar processing of pre-18S ribosomal RNA.

Immunogen: Synthetic peptide of human UTP18

Applications: ELISA, WB, IHC

Recommended Dilutions: IHC: 20-100;WB: 200-1000;ELISA: 5000-10000

Host Species: Rabbit

Clonality: Rabbit Polyclonal

Isotype: Immunogen-specific rabbit IgG

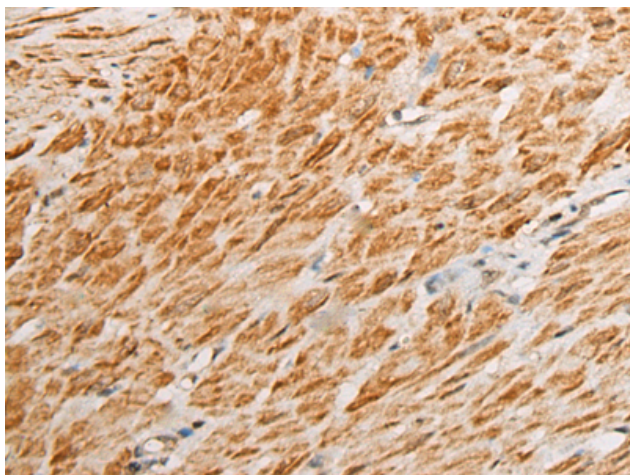
Purification: Antigen affinity purification

Species Reactivity: Human, Mouse

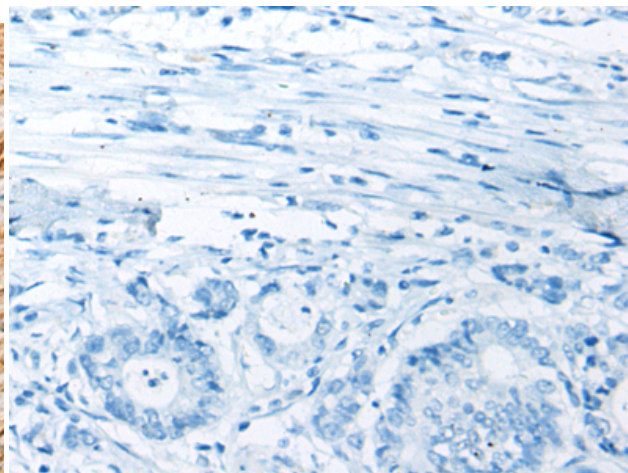
Constituents: PBS (without Mg²⁺ and Ca²⁺), pH 7.4, 150 mM NaCl, 0.05% Sodium Azide and 40% glycerol

Research Areas: Epigenetics and Nuclear Signaling

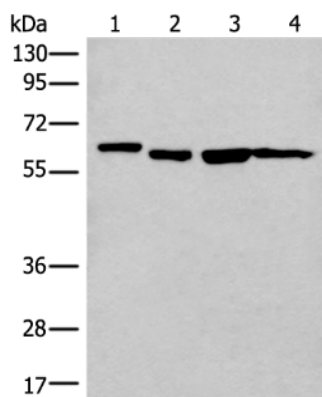
Storage & Shipping: Store at -20°C. Avoid repeated freezing and thawing



Immunohistochemistry analysis of paraffin embedded Human gastric cancer tissue using 221594(UTP18 Antibody) at a dilution of 1/25(Nucleus).



In comparison with the IHC on the left, the same paraffin-embedded Human gastric cancer tissue is first treated with the synthetic peptide and then with 221594(Anti-UTP18 Antibody) at dilution 1/25.



Gel: 8%SDS-PAGE, Lysate: 40 μ g;
Lane 1-4: 293T, HeLa, Raji and A172 cell lysates;
Primary antibody: 221594(UTP18 Antibody) at dilution 1/200;
Secondary antibody: Goat anti rabbit IgG at 1/8000 dilution;
Exposure time: 1 minute