

## UTP3 RABBIT PAB

**Cat.#:** S218334

**Product Name:** Anti-UTP3 Rabbit Polyclonal Antibody

**Synonyms:** CRL1; CRLZ1; SAS10

**UNIPROT ID:** Q9NQZ2 (Gene Accession - BC004546 )

**Background:** Essential for gene silencing; has a role in the structure of silenced chromatin. Plays a role in the developing brain (By similarity).

**Immunogen:** Fusion protein of human UTP3

**Applications:** ELISA, IHC

**Recommended Dilutions:** IHC: 30-150; ELISA: 5000-10000

**Host Species:** Rabbit

**Clonality:** Rabbit Polyclonal

**Isotype:** Immunogen-specific rabbit IgG

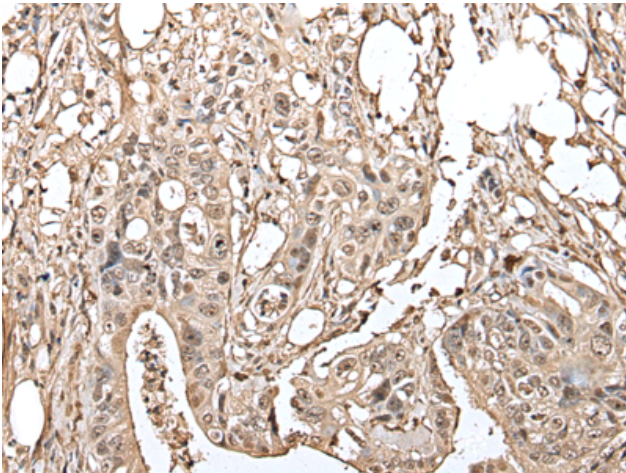
**Purification:** Antigen affinity purification

**Species Reactivity:** Human, Mouse, Rat

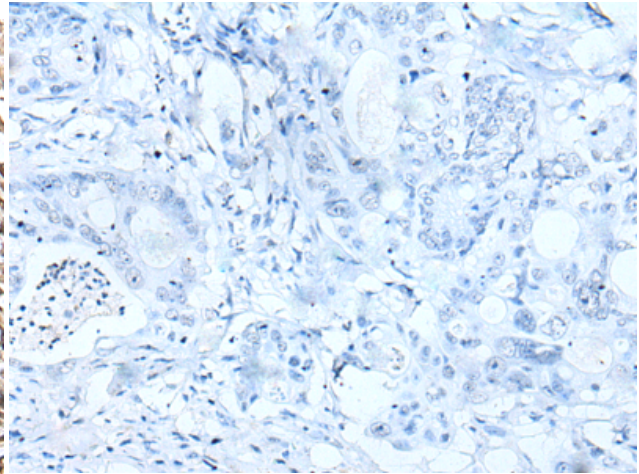
**Constituents:** PBS (without Mg<sup>2+</sup> and Ca<sup>2+</sup>), pH 7.4, 150 mM NaCl, 0.05% Sodium Azide and 40% glycerol

**Research Areas:** Epigenetics and Nuclear Signaling

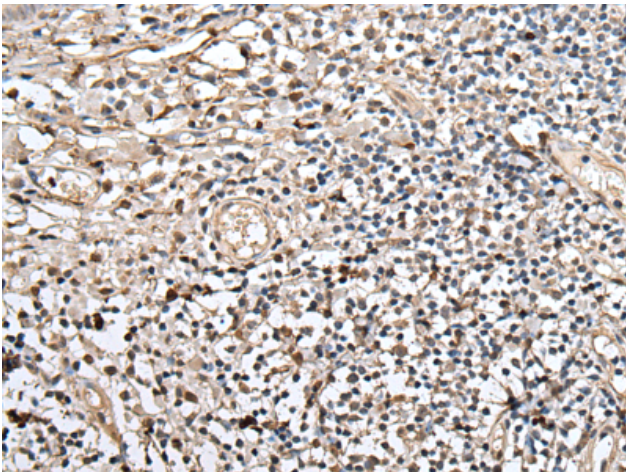
**Storage & Shipping:** Store at -20°C. Avoid repeated freezing and thawing



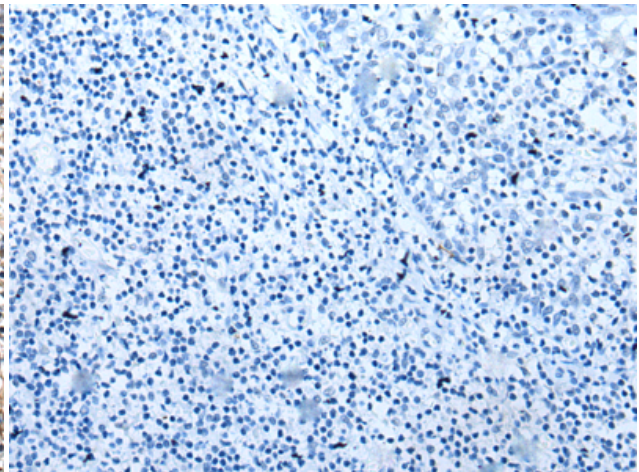
Immunohistochemistry analysis of paraffin embedded Human colorectal cancer tissue using 218334(UTP3 Antibody) at a dilution of 1/40(Nucleus and Cytoplasm).



In comparison with the IHC on the left, the same paraffin-embedded Human colorectal cancer tissue is first treated with the fusion protein and then with 218334(Anti-UTP3 Antibody) at dilution 1/40.



The image on the left is immunohistochemistry of paraffin-embedded Human tonsil tissue using 218334(Anti-UTP3 Antibody) at a dilution of 1/40.



In comparison with the IHC on the left, the same paraffin-embedded Human tonsil tissue is first treated with fusion protein and then with D224196(Anti-UTP3 Antibody) at dilution 1/40.