

## UTY RABBIT PAB

**Cat.#:** S218335

**Product Name:** Anti-UTY Rabbit Polyclonal Antibody

**Synonyms:** UTY1; KDM6AL

**UNIPROT ID:** O14607 (Gene Accession - BC071744 )

**Background:** This gene encodes a protein containing tetratricopeptide repeats which are thought to be involved in protein-protein interactions. The encoded protein is also a minor histocompatibility antigen which may induce graft rejection of male stem cell grafts. A large number of alternatively spliced transcripts have been observed for this gene, but the full length nature of some of these variants has not been determined.

**Immunogen:** Full length fusion protein

**Applications:** ELISA, WB, IHC

**Recommended Dilutions:** IHC: 25-100;WB: 200-1000;ELISA: 5000-10000

**Host Species:** Rabbit

**Clonality:** Rabbit Polyclonal

**Isotype:** Immunogen-specific rabbit IgG

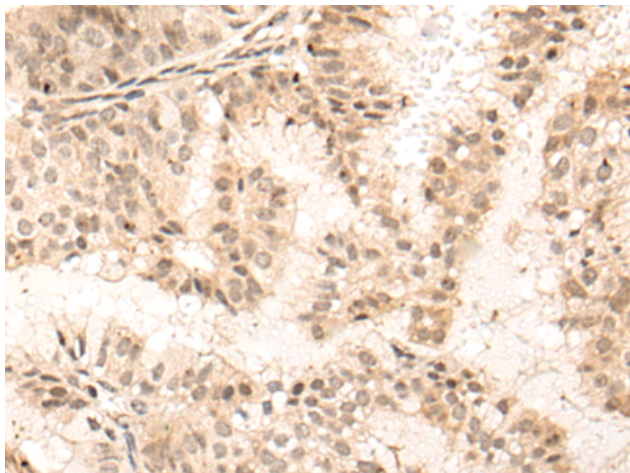
**Purification:** Antigen affinity purification

**Species Reactivity:** Human, Mouse

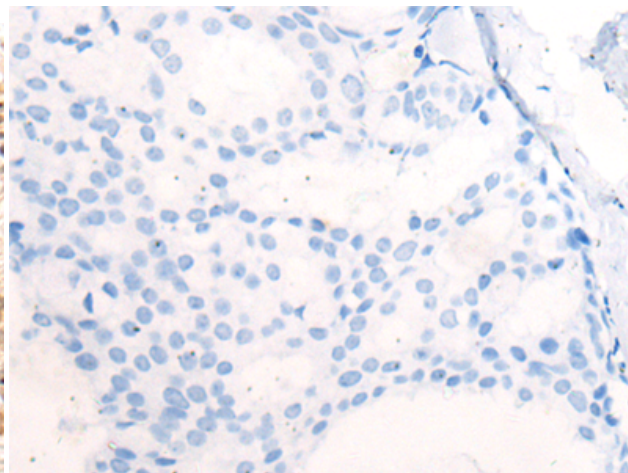
**Constituents:** PBS (without Mg<sup>2+</sup> and Ca<sup>2+</sup>), pH 7.4, 150 mM NaCl, 0.05% Sodium Azide and 40% glycerol

**Research Areas:** Epigenetics and Nuclear Signaling

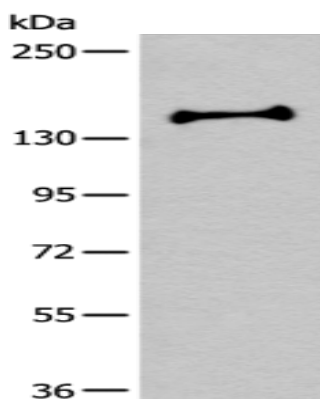
**Storage & Shipping:** Store at -20°C. Avoid repeated freezing and thawing



Immunohistochemistry analysis of paraffin embedded Human breast cancer tissue using 218335(UTY Antibody) at a dilution of 1/30(Nucleus).



In comparison with the IHC on the left, the same paraffin-embedded Human breast cancer tissue is first treated with the fusion protein and then with 218335(Anti-UTY Antibody) at dilution 1/30.



Gel: 6%SDS-PAGE, Lysate: 40  $\mu$ g;  
Lane: Mouse brain tissue lysate;  
Primary antibody: 218335(UTY Antibody) at dilution 1/200;  
Secondary antibody: Goat anti rabbit IgG at 1/8000 dilution;  
Exposure time: 1 minute